

Attachment to Tie Sheet M-21, T34N, R8E

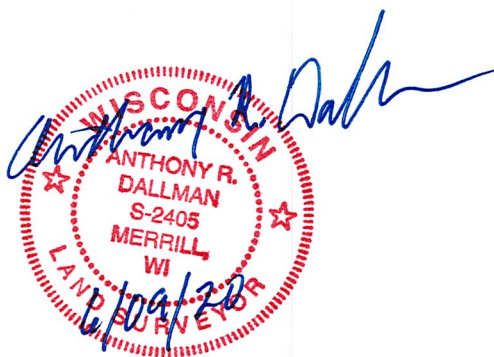
43408140000

I visited the corner on 6/18/2019 to verify the corner and reference tie monumentation. I found the 6" X 6" Granite Monument and all 4 ties from the Dennis Roberts tie sheet (12/03/2002). The established Coordinates and ties agree with existing monument.

Anthony R. Dallman 6/09/2020

Anthony R. Dallman, PLS-2405

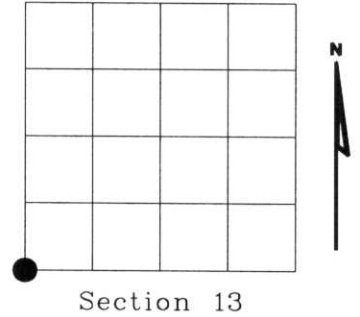
Lincoln County Surveyor



U.S. PUBLIC LAND SURVEY MONUMENT RECORD

NOTE: This form is intended and designed to fulfill all requirements of Wisconsin Administrative Code, Chapter A-E 7.08 U.S. Public Land Survey Monument Record (3)(a)(b)(c)(d)(e)(f)(g)(h)(i). An additional sheet may be added if necessary to conform with said requirements.

(a) Corner location: Township 34 North
 Range 08 East
 Town of HARRISON
 LINCOLN County, Wisconsin



Section 13

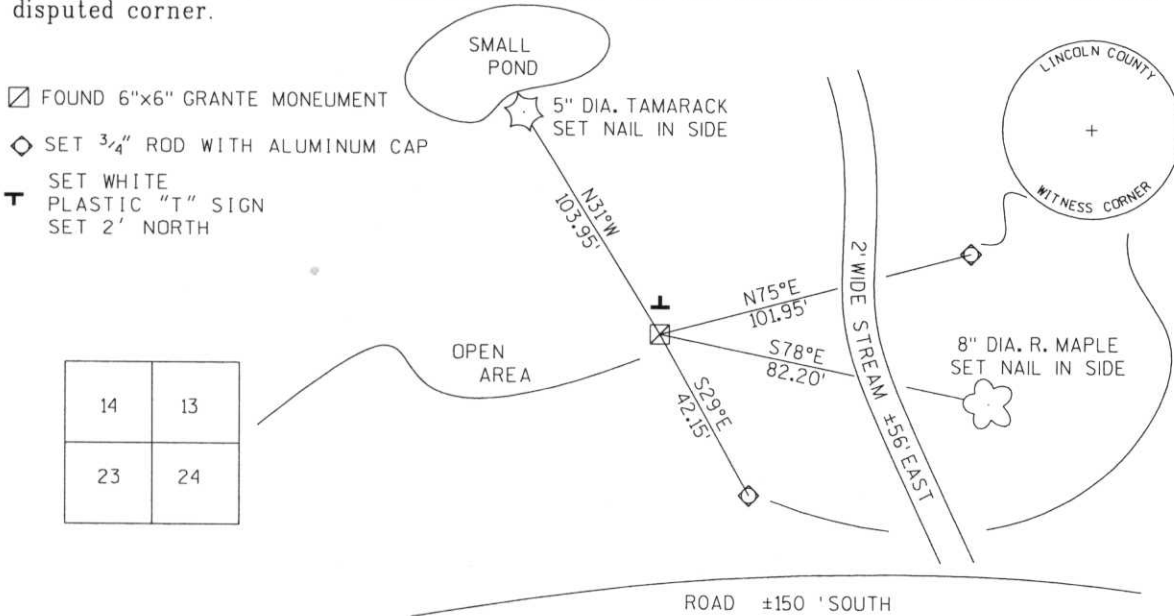
(b)(f)(g)(h) Description of monument found at this corner and if it was accepted, state all evidence (material, testimonial, occupational, plats, records, other monuments) used as a basis for accepting. If not accepted or if nothing was found, state evidence used as basis for establishing location. If reestablished through lost corner proportionate methods, indicate all monuments, distances and directions used to establish. Indicate type of monument found or set and sign post.

- 1854 - Original corner set by Jackson L. Prentice.
- 1937 - Frances Fuchs set 6"x6" granite stone in sand and rock mound.
- 1974 - Owen Ayres show granite stone Map M23.
- 1978 - Inman - Foltz and Associates, INC. show 6"x6" granite stone map L45.
- 2002 - I found 6"x6" granite stone in sand and rock mound.
 BT: 18" Pine (dead) S50°W 48.9'
 12" Pine (stub) N15°W 60.7'

Witnessed corner as shown below.

RECEIVED AT LINCOLN COUNTY
 COURTHOUSE THIS 11TH DAY
 OF December 20 02
Tony Dalton
 LAND INFORMATION OFFICE

(c)(d)(e) Plan view of corner with ties to at least 4 witness monuments. If in disagreement with previously established corner, show the distances between the two corners and also indicate the ties to the disputed corner.



(i) I, Dennis B. Roberts, Registered Land Surveyor *S-1863, hereby certify that the corner location on this record was determined by me or under my direction and control and that this U.S. Public Land Survey Monument Record is correct and complete to the best of my knowledge and belief.

Dennis B. Roberts
 Signature

12-03-02
 Date



Index No. M-21