

# U S PUBLIC LAND SURVEY MONUMENT RECORD

NOTE: This form is intended and designed to fulfill all requirements of Wisconsin Administrative Code, Chapter A-E 7.08 U.S. Public Land Survey Monument Record (3) (a-i)

A-E 7.08(3)(a) Identity of corner:  
 EAST 1/4 CORNER SECTION 12,  
 TOWNSHIP 34 NORTH,  
 RANGE 08 EAST OF THE 4TH PM,  
 TOWN OF HARRISON,  
 COUNTY OF LINCOLN

WISCRS - LINCOLN COUNTY  
 N: 219,302.630 USft (219,281.016)  
 E: 460,309.946 USft (460,313.698)  
 Datum: NAD83 (2011)  
 GNSS Method RTN - Direct  
 GNSS Control WISCORS VRS



The coordinate value shown has been verified by the average of two or more GPS observations at a markedly different time. Coordinates shown in parenthesis are provided by Lincoln County.

A-E 7.08(3)(b)

Original Surveyor: James M. Marsh

Date of Original Survey	Commenced:	August 12, 1851	Original Accessories:		
	Completed:	August 18, 1851	Hemlock	8	S 10° E 31 Links
			Hemlock	9	S 20° W 25 Links
			Hemlock	7	N 62° W 17 Links
			Hemlock	7	N 70° E 10 Links

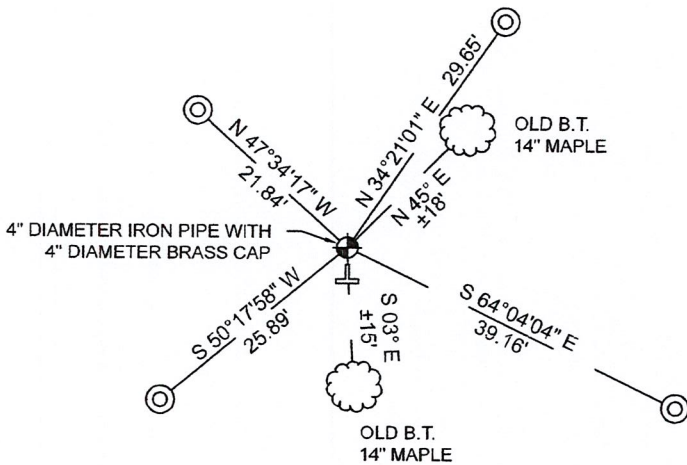
1937 - Surveyors - Kilroe and Hintz - indicate this position as "set 1/4 cor. bet 7-12, W. pine stp 20 N 13 E 10.6" on field notes supplied by Lincoln County.

1937 - Surveyor Francis Fuchs (aka Francis Fox) was known to set granite monuments in this area. Lincoln County map L279A & L376B.

November 28, 2022 - While performing the 2022 Lincoln County PLSS Corner Remonumentation and GPS Services project, I found a 4" diameter iron pipe with 4" brass cap stamped to identify corner. I established 4 new reference monuments as shown below.

A-E 7.08(3)(c)(d) Plan view of corner with references to at least 4 witness monuments.

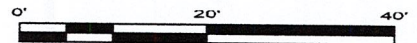
BEARINGS LISTED TO THE NEAREST SECOND ARE REFERENCED TO WISCONSIN COUNTY COORDINATE REFERENCE SYSTEM - LINCOLN COUNTY ZONE. ALL OTHER BEARINGS ARE MAGNETIC



RECEIVED BY LINCOLN COUNTY  
 SURVEYOR THIS 27<sup>TH</sup> DAY  
 OF December 20 22  
*James DeMuth*  
 COUNTY SURVEYOR

## LEGEND

- 4" diameter iron Pipe, found
- 7/8" diameter X 18" long - iron rod with 2" diameter aluminum cap, set
- Vinyl T-post, set ±3.5 feet south of corner



A-E 7.08(3)(e) 1851 Surveyor set a post, 1937 Surveyors set corner, 1937 Surveyor indicates the corner position but does not describe monument. I found a 4" diameter iron pipe with a 4" diameter brass cap.

A-E 7.08(3)(f) I accept this monument as a FOUND PERPETUATED LOCATION of the corner.

A-E 7.08(3)(g)(h) This corner was not determined through lost-corner-proportionate methods.

A-E 7.08(3)(i) I, Jeffrey L. DeMuth, Professional Land Surveyor No. S-2656, hereby certify that the corner location on this record was determined by the Lincoln County Surveyor, and the monuments found or set as shown hereon were measured by me or under my direction and control, and that this U.S. Public Land Survey Monument Record is correct and complete to the best of my knowledge, and belief.

*Jeffrey L. DeMuth*  
 SIGNATURE \_\_\_\_\_ DATE December 14, 2022



4-25

## REPORT

### 2022-Lincoln County PLSS Corner Remonumentation and GPS Services

Wisconsin Corner Point Identification Number: 43408122000

Surveyor: Jeffrey L. DeMuth – S2656

Corner monument: Found 4" diameter iron pipe with 4" brass cap stamped to identify corner.

Field Book: Cardinal North – Lincoln Co. Remon. – 2022-00

Page: 69

Horizontal Datum: WisCRS – Lincoln County Zone – NAD83(2011)

Date / time of initial measurement:

November 28, 2022 - Start 14:04:30 CST – End 14:33:14 CST

Reference monuments:

4 – Set - 7/8" diameter X 18" long iron rods with 2" diameter Lincoln Co. aluminum cap.

2 – Found – Bearing trees by others.

#### Coordinate Table

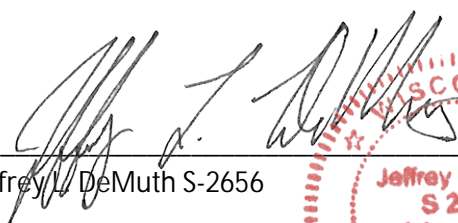
	County Provided	2022 Measurement	Difference
North	219281.016	219302.630	-21.61
East	460313.698	460309.946	3.75

Observed coordinates do not match existing calculated coordinates. Reason – existing coordinates were calculated - monument found.


Request Data Log for more information.

Additional Notes:

None

  
Jeffrey L. DeMuth S-2656

December 01, 2022  
Date



43408122000\_Mon-N

T. N. 1  
R. 8 E. R. 9 E.  
S. 12 T. 4 S. 7  
PROP. COR.  
T. K. D. H.

43408122000\_North

PLEASE  
DO NOT  
DISTURB  
NEARBY

S  
M  
U  
R  
V  
E  
Y  
E  
R

IF THE LOCATION  
OF THIS MARKER  
IS CHANGING  
PLEASE CONTACT  
COUNTY  
SURVEYORS  
OFFICE

4-3408122000

43408122000\_West



43408122000\_South



43408122000\_East

