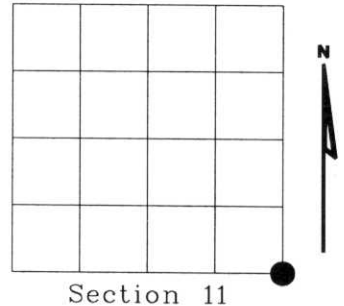


# U.S. PUBLIC LAND SURVEY MONUMENT RECORD

NOTE: This form is intended and designed to fulfill all requirements of Wisconsin Administrative Code, Chapter A-E 7.08 U.S. Public Land Survey Monument Record (3)(a)(b)(c)(d)(e)(f)(g)(h)(i). An additional sheet may be added if necessary to conform with said requirements.

(a) Corner location: Township 34 North  
 Range 08 East  
 Town of HARRISON  
 LINCOLN County, Wisconsin



(b)(f)(g)(h) Description of monument found at this corner and if it was accepted, state all evidence (material, testimonial, occupational, plats, records, other monuments) used as a basis for accepting. If not accepted or if nothing was found, state evidence used as basis for establishing location. If reestablished through lost corner proportionate methods, indicate all monuments, distances and directions used to establish. Indicate type of monument found or set and sign post.

1854 - Original corner set by Jackson L. Prentice.

1938 - Frances Fuchs found very old section corner post witnessed by very old BT. Set 6"x6" granite stone in rock mound.

- BTs: 3" Maple S52°E 52.6 Lks.
- 4" Maple S55°W 47.9 Lks.
- 3" Maple N37°W 32.1 Lks.
- 4" Maple N63°E 63.3 Lks.

1974 - Owen Ayres map No. M23 shows granite stone.

1978 - Inman, Foltz associates, Inc. map L45 shows 6"x6" granite stone.

2002 - I found 6"x6" granite stone in rock mound, 6" round post north 3'.

- BT: 16" Maple N63°E 63.3 Lks (Fuchs).

RECEIVED AT LINCOLN COUNTY  
 COURTHOUSE THIS 11<sup>TH</sup> DAY  
 OF December, 2002  
*Tony Dallen*  
 LAND INFORMATION OFFICE

Witnessed corner as shown below.

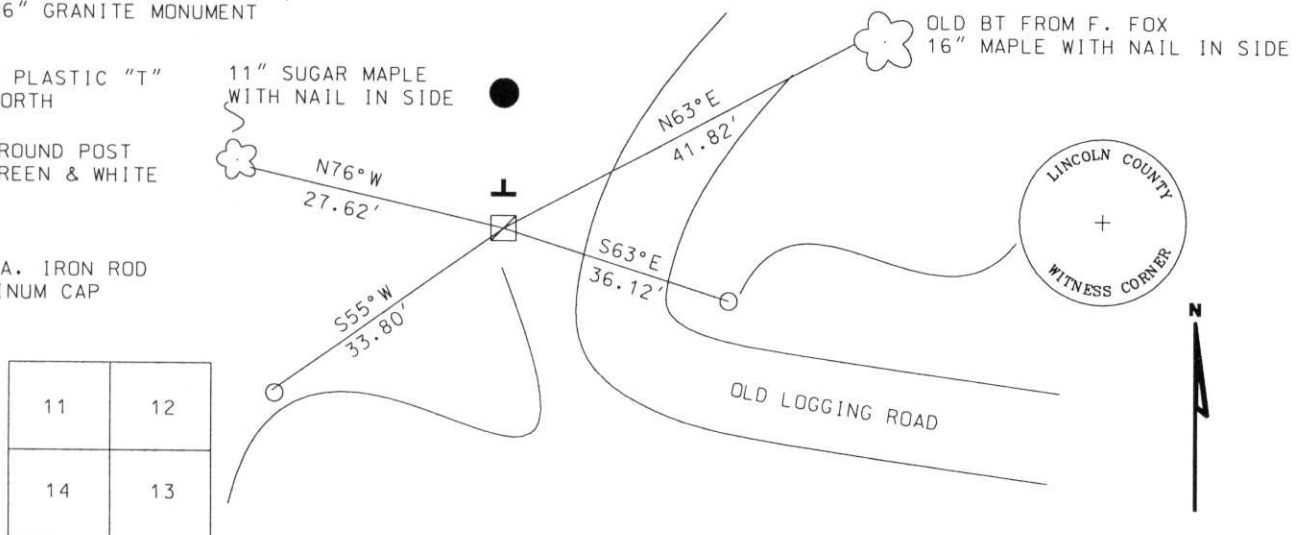
(c)(d)(e) Plan view of corner with ties to at least 4 witness monuments. If in disagreement with previously established corner, show the distances between the two corners and also indicate the ties to the disputed corner.

FOUND 6"x6" GRANITE MONUMENT

**T** SET WHITE PLASTIC "T" SIGN 1' NORTH

**●** FOUND 6" ROUND POST PAINTED GREEN & WHITE 3' NORTH

**○** SET 3/4" DIA. IRON ROD WITH ALUMINUM CAP



(i) I, DENNIS B. ROBERTS, Registered Land Surveyor \*S-1863 hereby certify that the corner location on this record was determined by me or under my direction and control and that this U.S. Public Land Survey Monument Record is correct and complete to the best of my knowledge and belief.



Index No. I-21

*Dennis B. Roberts* 12-04-02  
 Signature Date