

# U.S. PUBLIC LAND SURVEY MONUMENT RECORD

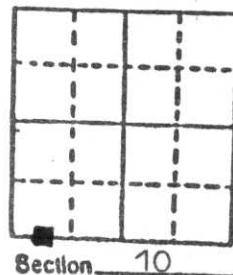
**Note:** This form is intended and designed to fulfill all requirements of Wisconsin Administrative Code, Chapter A-E 5.02, U.S. Public Land Survey Monument Record (3) (a) (b) (c) (d) (e) (f) (g) (h) (i). An additional sheet may be added if necessary to conform with said requirements.

(a) Corner location: Township 34 North

Range 8 East

Town Harrison

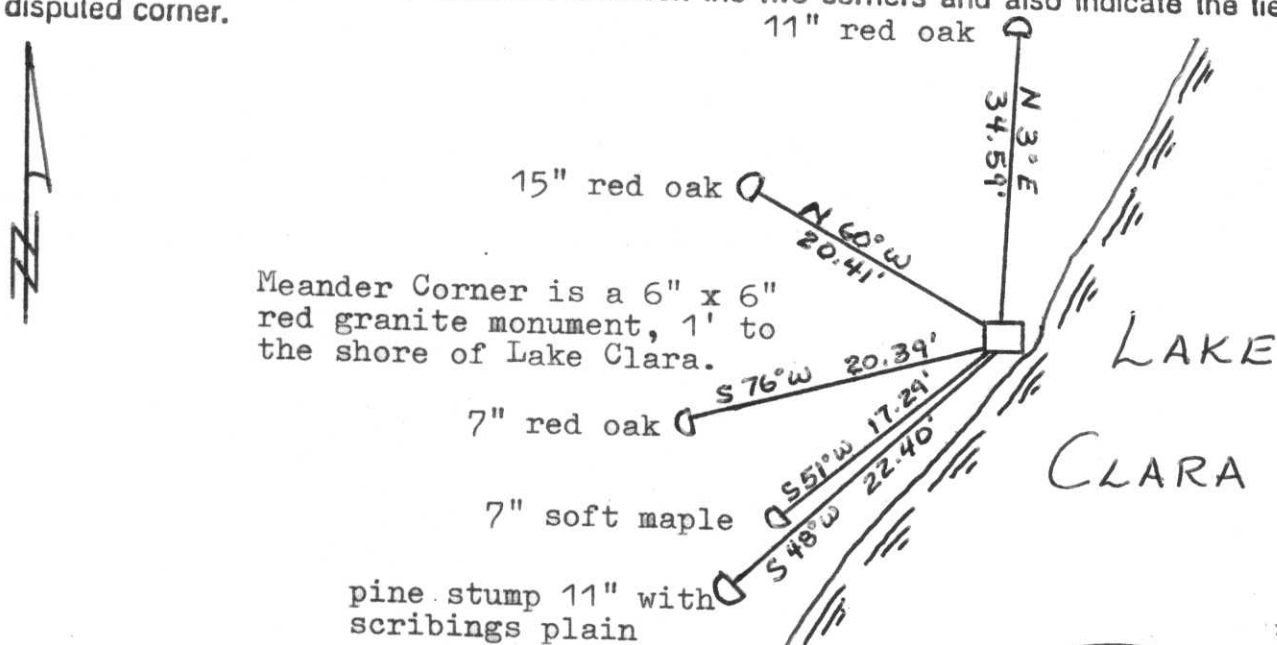
County Lincoln



b) (f) (g) (h) Description of monument found at this corner and if it was accepted, state all evidence (material, testimonial, occupational, plats, records, other monuments) used as a basis for accepting. If not accepted or if nothing was found, state evidence used as basis for establishing location. If reestablished through lost corner proportionate methods, indicate all monuments, distances and directions used to establish.

In a 1937 survey by Francis Fox, he set a 6" x 6" red granite monument for a Meander Corner between Sections 10 & 15 on the westerly shore of Lake Clara, witnessed by a pine stump 11" S 46 W 33.6 links. I found the granite monument tipped & leaning westerly. I also found the pine stump 11" and using it reset the granite upright per Fox's distance and mounded with more stone. I witnessed the corner as shown below.

c) (d) (e) Plan view of corner with ties to at least 4 witness monuments. If in disagreement with previously established corner, show the distances between the two corners and also indicate the ties to the disputed corner.



(i) I, Lester J. Schmit R.L.S. 1192  
 (Type or print name) certify that the corner location on this record was determined by me or under my direction and control and that this U.S. Public Land Survey Monument Record is correct and complete to the best of my knowledge and belief.

Lester J. Schmit 7 May 91  
 Signature Date



Index No. I-1314

RECEIVED AT LINCOLN COUNTY  
 COURTHOUSE THIS 13 DAY  
 OF May 1991.  
Pat Priebe  
 TAX DESCRIPTION OFFICE