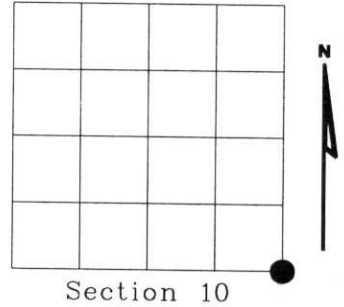


# U.S. PUBLIC LAND SURVEY MONUMENT RECORD

NOTE: This form is intended and designed to fulfill all requirements of Wisconsin Administrative Code, Chapter A-E 7.08 U.S. Public Land Survey Monument Record (3)(a)(b)(c)(d)(e)(f)(g)(h)(i). An additional sheet may be added if necessary to conform with said requirements.

(a) Corner location: Township 34 North  
 Range 08 East  
 Town of HARRISON  
 LINCOLN County, Wisconsin



(b)(f)(g)(h) Description of monument found at this corner and if it was accepted, state all evidence (material, testimonial, occupational, plats, records, other monuments) used as a basis for accepting. If not accepted or if nothing was found, state evidence used as basis for establishing location. If reestablished through lost corner proportionate methods, indicate all monuments, distances and directions used to establish. Indicate type of monument found or set and sign post.

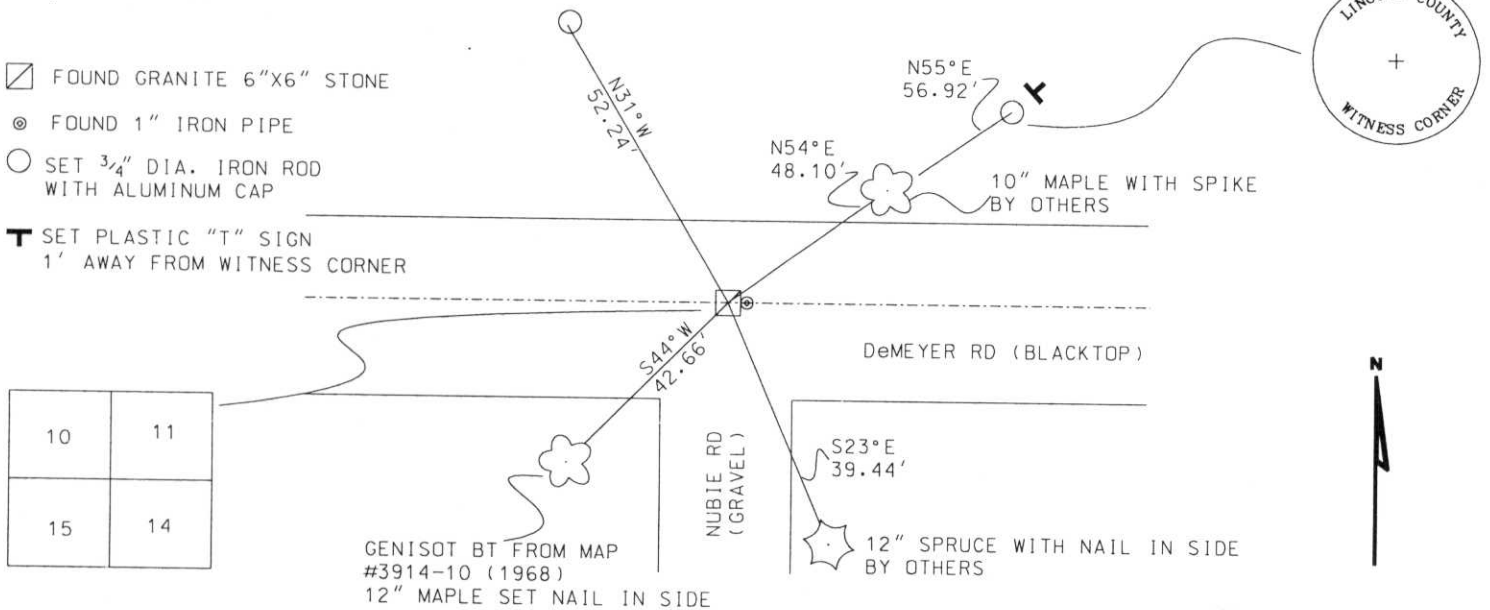
- 1854 - Original corner set by Jackson L. Prentice.
- 1938 - Frances Fuchs set stone 6" below top of road at intersection of roads.  
 BT: 4.5" N31°E 41.2'
- 1968 - Genisot & Associates had 6"x6" granite stone, map 3914-10.  
 BTs: 8" Oak N3°W, 26.4'  
 6" Maple S44°W, 43.2'  
 5" Spruce S29°E, 26.4'
- 1993-1995 - Davide L. Osterbrink, shows existing stone, C.S.M. #877, #895, #894, #831.
- 2002 - I found 6"x6" granite stone with 1" dia. iron pipe driven along east side.  
 BTs found: 12" Maple S44°W, 42.66' (Genisot)  
 10" Maple N54°E, 48.10'  
 12" Spruce S23°E, 39.44'

RECEIVED AT LINCOLN COUNTY  
 COURTHOUSE THIS 11<sup>TH</sup> DAY  
 OF December 20 02  
*Tony Walker*  
 LAND INFORMATION OFFICE

Witness corner as shown below.

Dug in Blacktop 3' south of center line of DeMeyer road, found 6"x6" granite 1.3' below surface, with 1" iron pipe driven along east side.

(c)(d)(e) Plan view of corner with ties to at least 4 witness monuments. If in disagreement with previously established corner, show the distances between the two corners and also indicate the ties to the disputed corner.



- FOUND GRANITE 6"x6" STONE
- FOUND 1" IRON PIPE
- SET 3/4" DIA. IRON ROD WITH ALUMINUM CAP
- SET PLASTIC "T" SIGN 1' AWAY FROM WITNESS CORNER

10	11
15	14

(i) I, DENNIS B. ROBERTS, Registered Land Surveyor \*S-1863 hereby certify that the corner location on this record was determined by me or under my direction and control and that this U.S. Public Land Survey Monument Record is correct and complete to the best of my knowledge and belief.

*Dennis B. Roberts*  
 Signature 12-04-02  
 Date



Index No. I-17