

U.S. PUBLIC LAND SURVEY MONUMENT RECORD

NOTE: THIS FORM IS INTENDED AND DESIGNED TO FULFILL ALL REQUIREMENTS OF WISCONSIN ADMINISTRATIVE CODE, CHAPTER A-E 7.08, U.S. PUBLIC LAND SURVEY MONUMENT RECORD (3)(a)(b)(c)(d)(e)(f)(g)(h)(i). ADDITIONAL SHEETS MAY BE NECESSARY TO CONFORM TO SAID REQUIREMENTS.

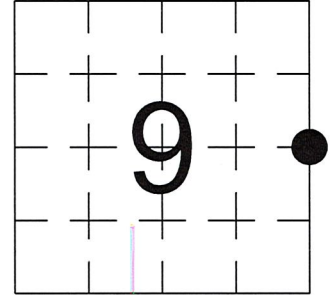
T 34 N, R 8 E

(a) CORNER LOCATION:

EAST 1/4 CORNER, SECTION 9
 TOWNSHIP 34 NORTH
 RANGE 8 EAST
 TOWN OF HARRISON
 LINCOLN COUNTY
 WISCONSIN

(b) HISTORY OF ORIGINAL CORNER:

ORIGINAL SURVEYOR: Jackson Prentice, Set post
 COMMENCING DATE: November 27, 1854
 COMPLETION DATE: December 11, 1854
 ORIGINAL BEARING TREES:
 10" Birch; S 81° W; 18 links
 12" Birch; N 58° W; 22 links



(f)(g)(h) DESCRIPTION OF MONUMENT FOUND AT THIS CORNER AND IF IT WAS ACCEPTED. STATE ALL EVIDENCE (MATERIAL, TESTIMONIAL, OCCUPATIONAL, PLATS, RECORDS, OTHER MONUMENTS) USED AS A BASIS FOR ESTABLISHING LOCATION. IF RE-ESTABLISHING THROUGH LOST CORNER PROPORTIONATE METHODS, INDICATE ALL MONUMENTS, DISTANCES, AND DIRECTIONS USED TO ESTABLISH. INDICATE TYPE OF MONUMENTS FOUND OR SET.

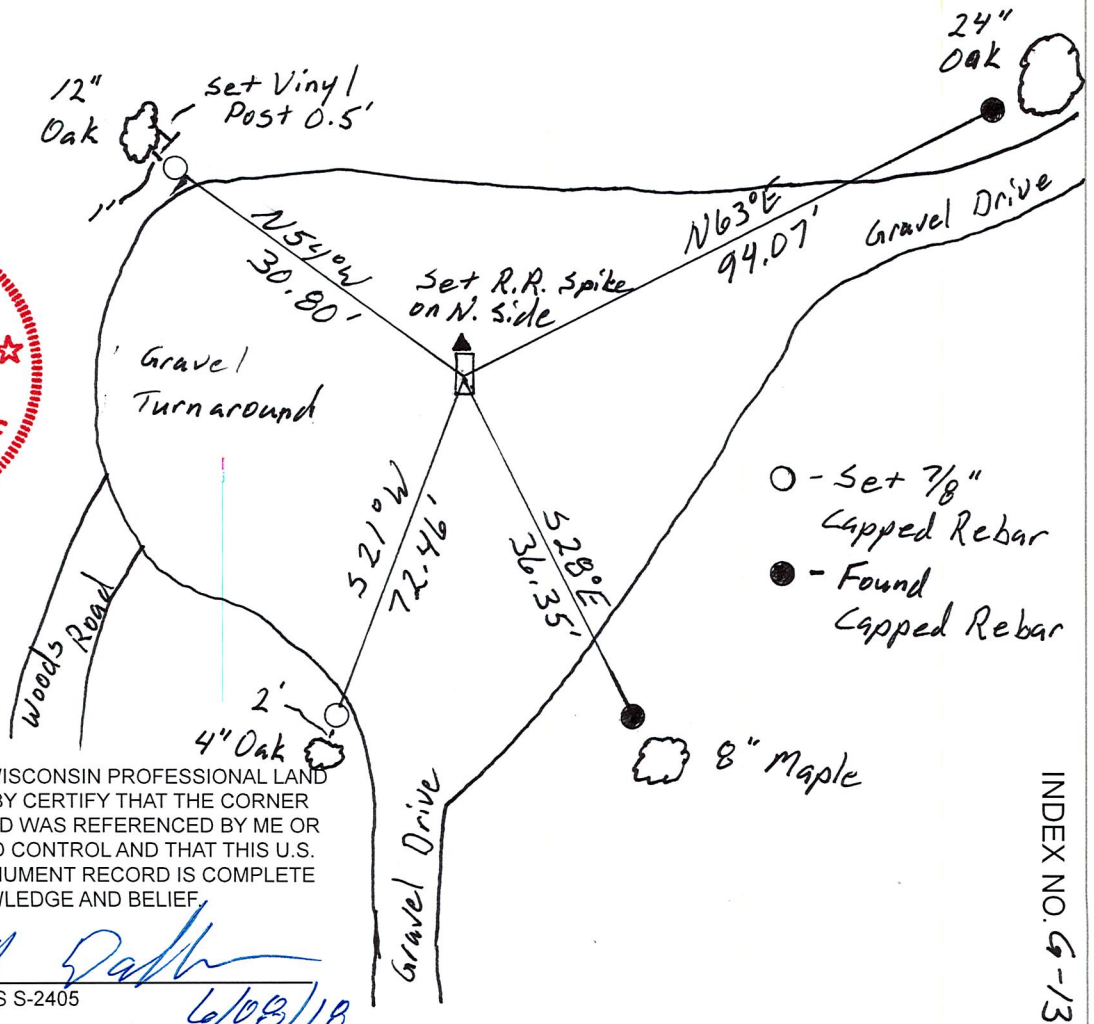
1937 - Francis Fuchs set 6"x6" Granite Monument.

1996 - David Osterbrink found 6"x6" Granite Monument and set witness monuments to perpetuate the location.

05/31/2018, I, Anthony R. Dallman, PLS-2405, found the 6" x 6" Granite Monument laying flat on the edge of a gravel driveway, part of the top portion of monument was broken off, top of Granite is now 3"x6" with only the etched "10" remains. Found 2 remaining reference ties from Osterbrink, they crossed at existing coordinate location. I accepted this location and reset the Granite Monument, 8" below gravel surface, so that the middle of the 3"x6" top is the location of the Corner and set 2 new reference ties to further perpetuate the corner location, as shown in the sketch below.

(c)(d)(e) PLAN VIEW OF THE CORNER WITH TIES TO AT LEAST FOUR WITNESSES. IF IN DISAGREEMENT WITH PREVIOUSLY ESTABLISHED CORNER, SHOW THE DISTANCES BETWEEN THE TWO CORNERS AND ALSO THE TIES TO THE DISPUTED CORNER.

- Tie bearings by hand-held compass.
- Tie distances by steel tape.



I, ANTHONY R. DALLMAN, WISCONSIN PROFESSIONAL LAND SURVEYOR, S-2405, HEREBY CERTIFY THAT THE CORNER LOCATION ON THIS RECORD WAS REFERENCED BY ME OR UNDER MY DIRECTION AND CONTROL AND THAT THIS U.S. PUBLIC LAND SURVEY MONUMENT RECORD IS COMPLETE TO THE BEST OF MY KNOWLEDGE AND BELIEF

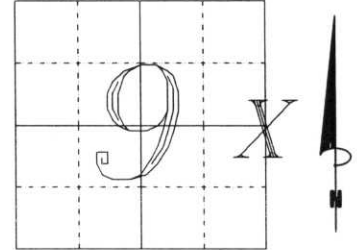
Anthony R. Dallman
 ANTHONY R. DALLMAN, PLS S-2405
 6/08/18

INDEX NO. G-13

U.S. PUBLIC LAND SURVEY MONUMENT RECORD

NOTE: THIS FORM IS INTENDED AND DESIGNED TO FULFILL ALL REQUIREMENTS OF WISCONSIN ADMINISTRATIVE CODE, CHAPTER A-E 7.08 U.S. PUBLIC LAND SURVEY MONUMENT RECORD (3) (a) (b) (c) (d) (e) (f) (g) (h) (i). AN ADDITIONAL SHEET MAY BE ADDED IF NECESSARY TO CONFORM WITH SAID REQUIREMENTS.

(a) CORNER LOCATION: TOWNSHIP 34 N NORTH
 RANGE 8 E EAST/WEST
 TOWN/CITY/VILLAGE HARRISON
 COUNTY LINCOLN



SECTION 9

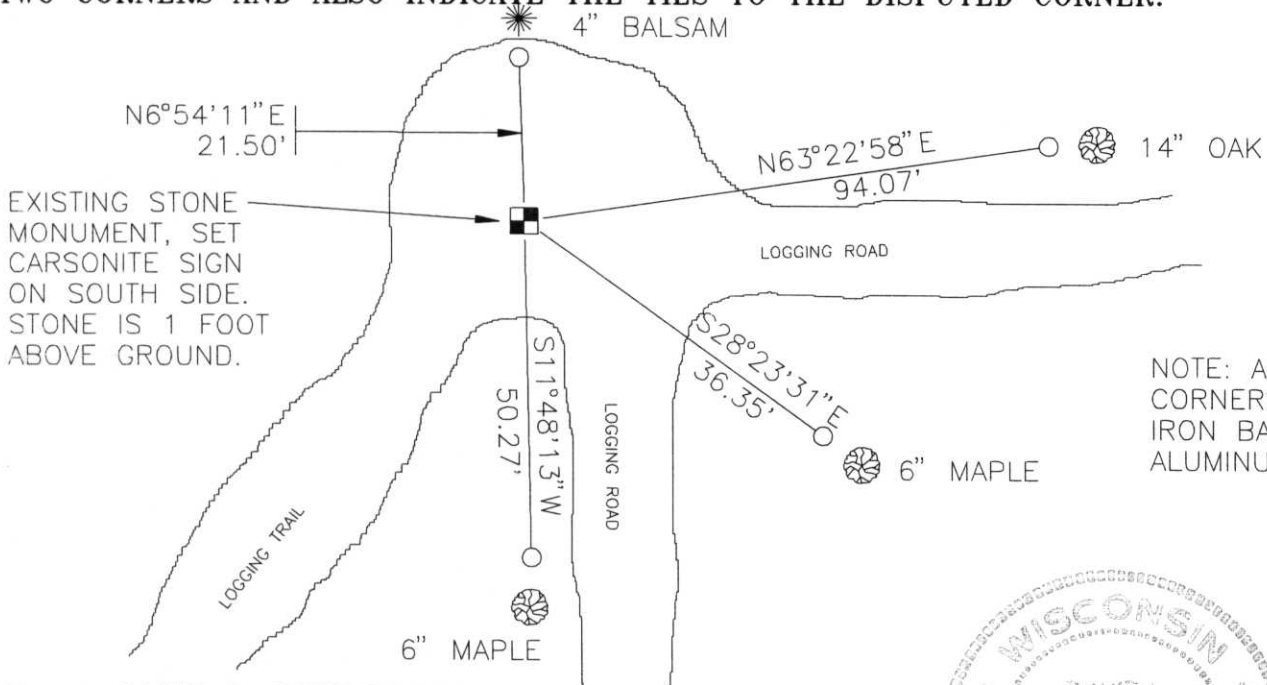
(b) (f) (g) (h) DESCRIPTION OF MONUMENT FOUND AT THIS CORNER AND IF IT WAS ACCEPTED, STATE ALL EVIDENCE (MATERIAL, TESTIMONIAL, OCCUPATIONAL, PLATS, RECORDS, OTHER MONUMENTS) USED AS BASIS FOR ACCEPTING. IF NOT ACCEPTED OR IF NOTHING WAS FOUND, STATE EVIDENCE USED AS BASIS FOR ESTABLISHING LOCATION. IF REESTABLISHED THROUGH LOST CORNER PROPORTIONATE METHODS, INDICATE ALL MONUMENTS, DISTANCES AND DIRECTIONS USED TO ESTABLISH. INDICATE TYPE OF MONUMENT FOUND OR SET AND SIGN POST.

ORIGINAL SURVEY BY JACKSON PRENTICE CIRCA 1854. IN 1937, FRANCIS FOX SET A 6" x 6" GRANITE MONUMENT HERE.

TOOK LOGGING TRAILS INTO WOODS, FOUND STONE MONUMENT, WHITE WOOD POST, 5 FEET SOUTH, NO TRESSPASSING SIGN NEARBY, ROCKS MOUNDED AROUND STONE MONUMENT, HELD AS CORNER.

RECEIVED AT LINCOLN COUNTY
 COURTHOUSE THIS 29th DAY
 OF Oct. 19 96
Pat Priebe
 TAX DESCRIPTION OFFICE

(c) (d) (e) PLAN VIEW OF CORNER WITH TIES TO AT LEAST 4 WITNESS MONUMENTS. IF IN DISAGREEMENT WITH PREVIOUSLY ESTABLISHED CORNER, SHOW THE DISTANCES BETWEEN THE TWO CORNERS AND ALSO INDICATE THE TIES TO THE DISPUTED CORNER.



NOTE: ALL WITNESS CORNERS ARE 3/4" IRON BAR WITH ALUMINUM CAP.

(i) I, DAVID L. OSTERBRINK RLS
 (TYPE OR PRINT NAME) CERTIFY THAT THE CORNER LOCATION ON THIS RECORD WAS DETERMINED BY ME OR UNDER MY DIRECTION AND CONTROL AND THAT THIS U.S. PUBLIC LAND SURVEY MONUMENT RECORD IS CORRECT AND COMPLETE TO THE BEST OF MY KNOWLEDGE AND BELIEF.

David L. Osterbrink 10-27-96
 SIGNATURE DATE



STAMP

INDEX NO. 9-13