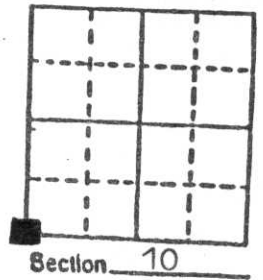


# U.S. PUBLIC LAND SURVEY MONUMENT RECORD

**Note:** This form is intended and designed to fulfill all requirements of Wisconsin Administrative Code, Chapter A-E 5.02, U.S. Public Land Survey Monument Record (3) (a) (b) (c) (d) (e) (f) (g) (h) (i). An additional sheet may be added if necessary to conform with said requirements.

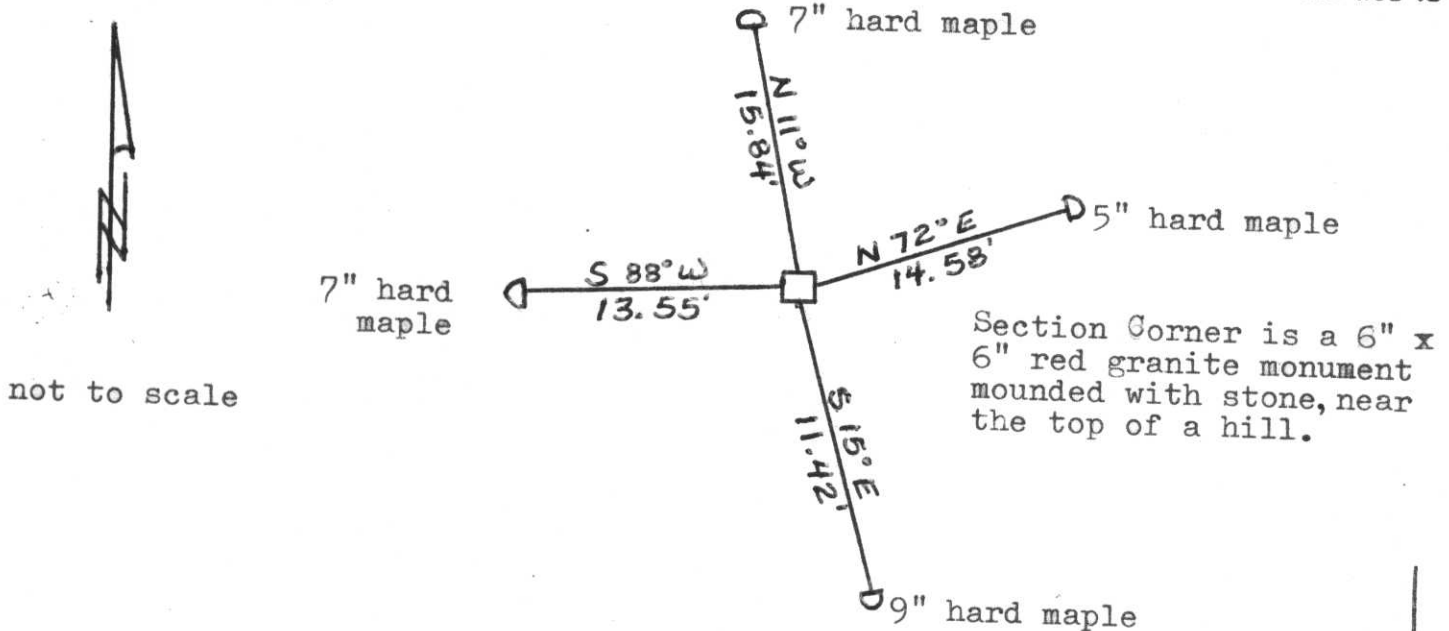
(a) Corner location: Township 34 North  
 Range 8 East

Town Harrison  
 County Lincoln



b) (f) (g) (h) Description of monument found at this corner and if it was accepted, state all evidence (material, testimonial, occupational, plats, records, other monuments) used as a basis for accepting. If not accepted or if nothing was found, state evidence used as basis for establishing location. If reestablished through lost corner proportionate methods, indicate all monuments, distances and directions used to establish. Original Gov't. Survey: 1854 by Jackson Prentice, set wood post for corner with bearings, hemlock 16 S 13 E 9, maple 12 S 37 W 25, birch 10 N 18 E 22 & hemlock 8 N 49 W 28. In a 1937 survey by Francis Fox, he found none of the original witness trees to the corner, but by crossing old blaze lines, he dug & found a very old post point which he accepted for the corner location. He replaced the post point with a 6" x 6" granite monument for the corner mounded with stone and witnessed it with an ironwood 9" S 54 E 43.2 links & an ironwood 9" S 5 W 61.06 links. I found the granite but both of his witnesses are gone. Made new witnesses as shown below.

c) (d) (e) Plan view of corner with ties to at least 4 witness monuments. If in disagreement with previously established corner, show the distances between the two corners and also indicate the ties to the disputed corner.



(i) I, Lester J. Schmit R.L.S. 1192

(Type or print name) certify that the corner location on this record was determined by me or under my direction and control and that this U.S. Public Land Survey Monument Record is correct and complete to the best of my knowledge and belief.

Signature Lester J. Schmit Date 7 May 91



Index No. I-13

RECEIVED AT LINCOLN COUNTY  
 COURTHOUSE THIS 13 DAY  
 OF May 1991  
Pat Priebe  
 TAX DESCRIPTION CERTIFICATE