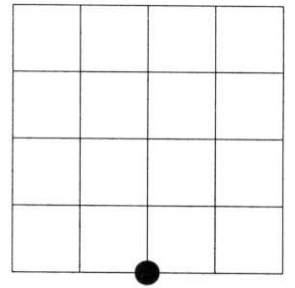


U.S. PUBLIC LAND SURVEY MONUMENT RECORD

NOTE: This form is intended and designed to fulfill all requirements of Wisconsin Administrative Code, Chapter A-E 7.08 U.S. Public Land Survey Monument Record (3)(a)(b)(c)(d)(e)(f)(g)(h)(i). An additional sheet may be added if necessary to conform with said requirements.

(a) Corner location: Township 34 North
 Range 08 East
 Town of HARRISON
 LINCOLN County, Wisconsin



Section 5

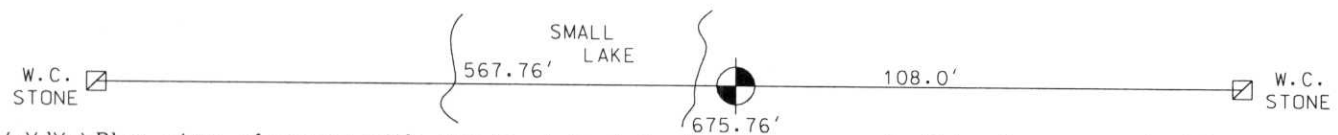
(b)(f)(g)(h) Description of monument found at this corner and if it was accepted, state all evidence (material, testimonial, occupational, plats, records, other monuments) used as a basis for accepting. If not accepted or if nothing was found, state evidence used as basis for establishing location. If reestablished through lost corner proportionate methods, indicate all monuments, distances and directions used to establish. Indicate type of monument found or set and sign post.

1954 - Original corner set by Jackson L. Prentice.

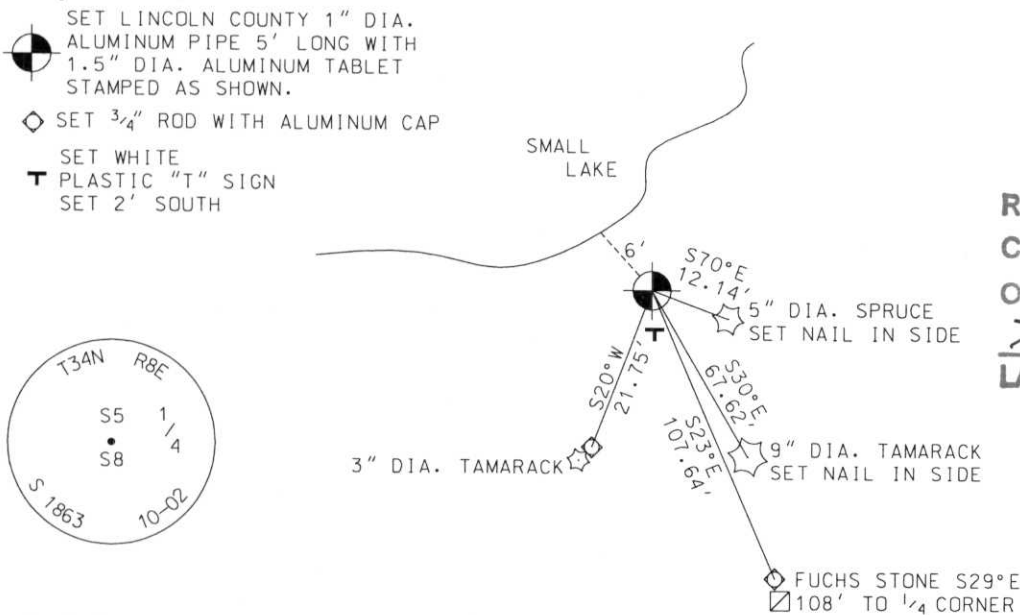
1937 - Frances Fuchs found old post evidenced by original BT. Set wood post because of boggy shore. Set two stones on a straight line across the post for witnesses. Set one stone N29°W (distance across lake not measured). It sets at edge of marsh with a steep hill to the north. Peak of hill also online. Set other stone S29°E 108'.

2002 - I found stone S29°E, 108' and found stone N29°W tipped south. Plumbed stone and mounded with rock. Set Lincoln county monument between stones found.

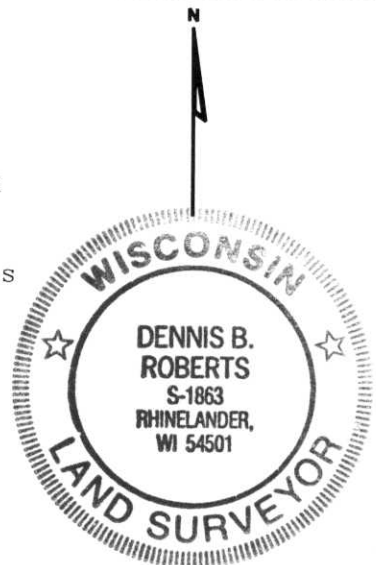
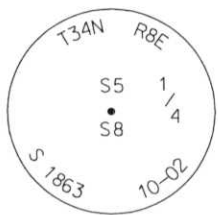
Witnessed Corner as shown below.



(c)(d)(e) Plan view of corner with ties to at least 4 witness monuments. If in disagreement with previously established corner, show the distances between the two corners and also indicate the ties to the disputed corner.



RECEIVED AT LINCOLN COUNTY
 COURTHOUSE THIS 2ND DAY
 OF December 20 02
Tony Dahl
 LAND INFORMATION OFFICE



(i) I, Dennis B. Roberts, Registered Land Surveyor *S-1863, hereby certify that the corner location on this record was determined by me or under my direction and control and that this U.S. Public Land Survey Monument Record is correct and complete to the best of my knowledge and belief.

Dennis B. Roberts
 Signature Date 11-13-02

Index No. 6-17