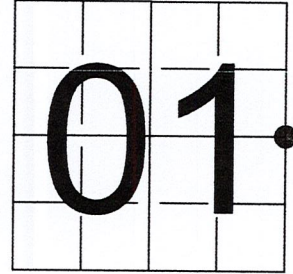


U S PUBLIC LAND SURVEY MONUMENT RECORD

NOTE: This form is intended and designed to fulfill all requirements of Wisconsin Administrative Code, Chapter A-E 7.08 U.S. Public Land Survey Monument Record (3) (a-i)

A-E 7.08(3)(a) Identity of corner:
 EAST 1/4 CORNER SECTION 01,
 TOWNSHIP 34 NORTH,
 RANGE 08 EAST OF THE 4TH PM,
 TOWN OF HARRISON,
 COUNTY OF LINCOLN

WISCORS - LINCOLN COUNTY
 N: 224,589.171 USft (224,566.907)
 E: 460,304.764 USft (460,315.009)
 Datum: NAD83 (2011)
 GNSS Method RTN - Direct
 GNSS Control WISCORS VRS



The coordinate value shown has been verified by the average of two or more GPS observations at a markedly different time. Coordinates shown in parenthesis are provided by Lincoln County.

A-E 7.08(3)(b)

Original Surveyor: James M. Marsh

Date of Original Survey	Commenced:	August 12, 1851	Original Accessories:		
	Completed:	August 18, 1851	Spruce	10	N 40° E 5 Links
			Tamarack	12	S 78° E 9 Links
			Tamarack	10	S 65° W 8 Links

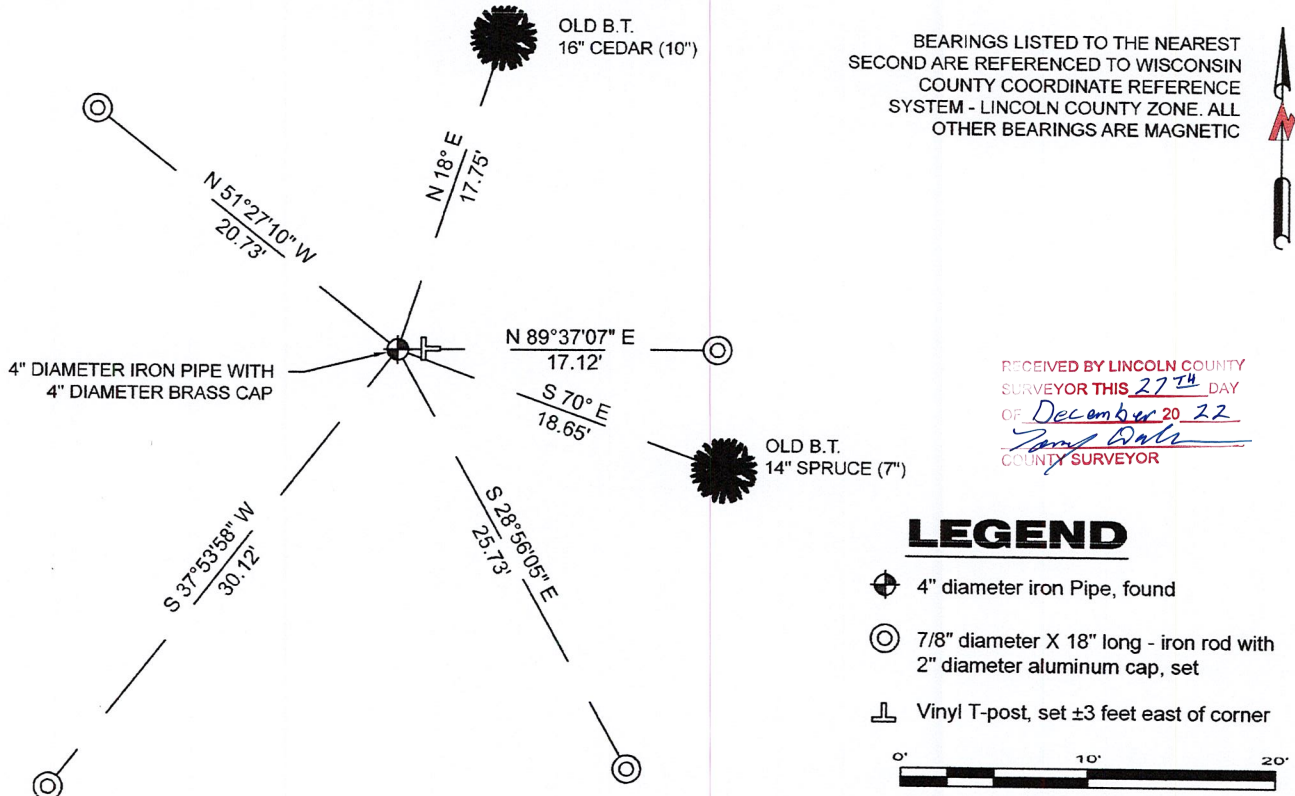
1937 - Surveyors - Kilroe and Hintz - indicate this position as "Org. 1/4 cor., Org Tam. 12 S 80 E 9, Orig. Tam 10 S 60 W 8, and set a new cedar 12, S 60 E 16.66" on field notes supplied by Lincoln County.

1937 - Surveyor Francis Fuchs (aka Francis Fox) was known to set granite monuments in this area. Lincoln County map L279A & L376B.

March 13, 1980 - Surveyor 1383 - William G. Immich - indicates this position as "3" IP/brass cap, and established 4 bearing trees" on Lincoln County map M108A.

November 28, 2022 - While performing the 2022 Lincoln County PLSS Corner Remonumentation and GPS Services project, I found a 4" diameter iron pipe with 4" brass cap stamped to identify corner. I also found 2 of Immich's bearing trees. The monument is in a cedar swamp. I established 4 new reference monuments as shown below.

A-E 7.08(3)(c)(d) Plan view of corner with references to at least 4 witness monuments.

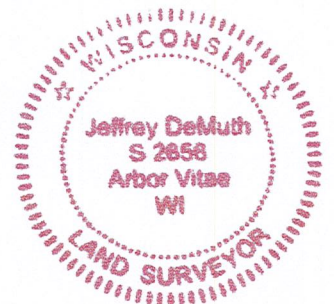


A-E 7.08(3)(e) 1851 Surveyor set a post, 1937 Surveyors found original and presumably set a new monument, 1937 Surveyor indicates the corner position but does not describe monument, 1980 Surveyor has a 3" ip with brass cap. I found a 4" diameter iron pipe with a 4" diameter brass cap.

A-E 7.08(3)(f) I accept this monument as a FOUND PERPETUATED LOCATION of the corner.

A-E 7.08(3)(g)(h) This corner was not determined through lost-corner-proportionate methods.

A-E 7.08(3)(i) I, Jeffrey L. DeMuth, Professional Land Surveyor No. S-2656, hereby certify that the corner location on this record was determined by the Lincoln County Surveyor, and the monuments found or set as shown hereon were measured by me or under my direction and control, and that this U.S. Public Land Survey Monument Record is correct and complete to the best of my knowledge, and belief.



SIGNATURE

[Handwritten Signature]

December 14, 2022

DATE

C-25

REPORT

2022-Lincoln County PLSS Corner Remonumentation and GPS Services

Wisconsin Corner Point Identification Number: 43408012000

Surveyor: Jeffrey L. DeMuth – S2656

Corner monument: Found 4" diameter iron pipe with 4" brass cap stamped to identify corner.

Field Book: Cardinal North – Lincoln Co. Remon. – 2022-00

Page: 68

Horizontal Datum: WisCRS – Lincoln County Zone – NAD83(2011)

Date / time of initial measurement:

November 28, 2022 - Start 11:50:36 CST – End 12:07:33 CST

Reference monuments:

4 – Set - 7/8" diameter X 18" long iron rods with 2" diameter Lincoln Co. aluminum cap.

2 – Found – Bearing trees by others.

Coordinate Table

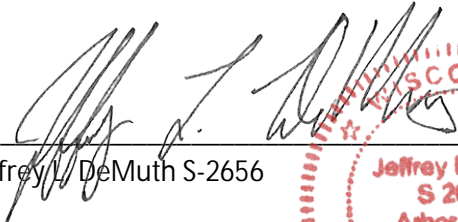
	County Provided	2022 Measurement	Difference
North	224566.907	224589.171	-22.26
East	460315.009	460304.764	10.25

Observed coordinates do not match existing calculated coordinates. Reason – existing coordinates were calculated - monument found.

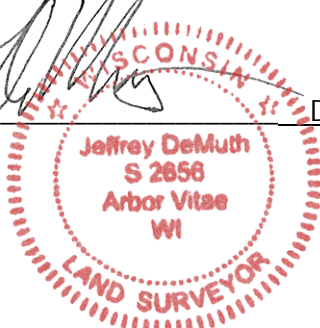
Request Data Log for more information.

Additional Notes:

Corner falls in a cedar swamp.


Jeffrey L. DeMuth S-2656

December 01, 2022
Date



43408012000_Mon-N



43408012000_North



43408012000_West



43408012000_South



43408012000_East

