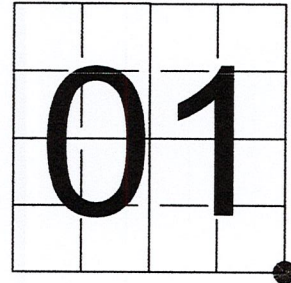


# U S PUBLIC LAND SURVEY MONUMENT RECORD

NOTE: This form is intended and designed to fulfill all requirements of Wisconsin Administrative Code, Chapter A-E 7.08 U.S. Public Land Survey Monument Record (3) (a-i)

A-E 7.08(3)(a) Identity of corner:  
 SOUTHEAST CORNER SECTION 01,  
 TOWNSHIP 34 NORTH,  
 RANGE 08 EAST OF THE 4TH PM,  
 TOWN OF HARRISON,  
 COUNTY OF LINCOLN

WISCORS - LINCOLN COUNTY  
 N: 221,944.870 USft (221,904.824)  
 E: 460,304.020 USft (460,315.999)  
 Datum: NAD83 (2011)  
 GNSS Method RTN - Direct  
 GNSS Control WISCORS VRS



The coordinate value shown has been verified by the average of two or more GPS observations at a markedly different time. Coordinates shown in parenthesis are provided by Lincoln County.

A-E 7.08(3)(b)

Original Surveyor: James M. Marsh

Date of Original Survey Commenced: August 12, 1851  
 Completed: August 18, 1851

Original Accessories:  
 Birch 14 S 30° E 9 Links  
 Hemlock 12 S 60° W 39 Links  
 Hemlock 10 N 21° W 10 Links  
 Hemlock 8 N 31° E 20 Links

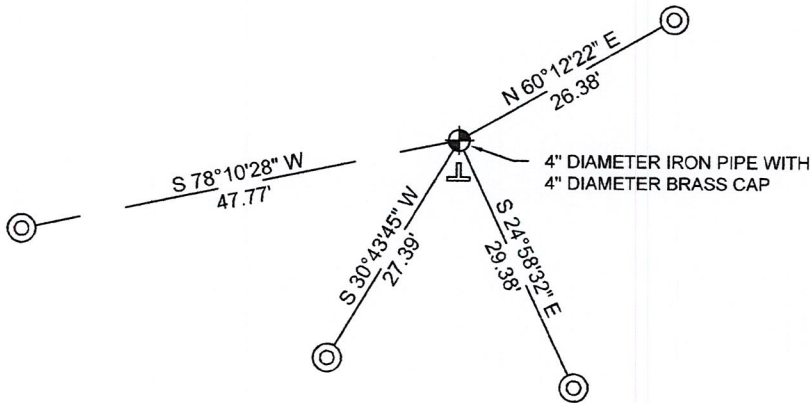
1937 - Surveyors - Kilroe and Hintz - indicate this position as "set sec. cor. 1-6-7-12" on field notes supplied by Lincoln County.

1937 - Surveyor Francis Fuchs (aka Francis Fox) was known to set granite monuments in this area. Lincoln County map L279A & L376B.

March 13, 1980 - Surveyor 1383 - William G. Immich - indicates this position as "3"IP/brass cap" on Lincoln County map M108A.

November 8, 2022 - While performing the 2022 Lincoln County PLSS Corner Remonumentation and GPS Services project, I found a 4" diameter iron pipe with 4" brass cap stamped to identify corner. The monument extends ±13" above grade and is located north of a woods road. I established 4 new reference monuments as shown below.

A-E 7.08(3)(c)(d) Plan view of corner with references to at least 4 witness monuments.



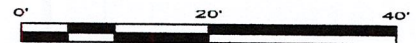
BEARINGS LISTED TO THE NEAREST SECOND ARE REFERENCED TO WISCONSIN COUNTY COORDINATE REFERENCE SYSTEM - LINCOLN COUNTY ZONE. ALL OTHER BEARINGS ARE MAGNETIC



RECEIVED BY LINCOLN COUNTY  
 SURVEYOR THIS 27<sup>TH</sup> DAY  
 OF December 20 22  
*Jeffrey DeMuth*  
 COUNTY SURVEYOR

## LEGEND

- 4" diameter iron Pipe, found
- 7/8" diameter X 30" long - iron rod with 2" diameter aluminum cap, set
- Vinyl T-post, set ±3 feet south of corner



A-E 7.08(3)(e) 1851 Surveyor set a post, 1937 Surveyors set corner, 1937 Surveyor indicates the corner position but does not describe monument, 1980 Surveyor has a 3" ip with brass cap. I found a 4" diameter iron pipe with a 4" diameter brass cap.

A-E 7.08(3)(f) I accept this monument as a FOUND PERPETUATED LOCATION of the corner.

A-E 7.08(3)(g)(h) This corner was not determined through lost-corner-proportionate methods.

A-E 7.08(3)(i) I, Jeffrey L. DeMuth, Professional Land Surveyor No. S-2656, hereby certify that the corner location on this record was determined by the Lincoln County Surveyor, and the monuments found or set as shown hereon were measured by me or under my direction and control, and that this U.S. Public Land Survey Monument Record is correct and complete to the best of my knowledge, and belief.

SIGNATURE

December 14, 2022

DATE



E-25

## REPORT

### 2022-Lincoln County PLSS Corner Remonumentation and GPS Services

Wisconsin Corner Point Identification Number: 43408010000

Surveyor: Jeffrey L. DeMuth – S2656

Corner monument: Found 4" diameter iron pipe with 4" brass cap stamped to identify corner.

Field Book: Cardinal North – Lincoln Co. Remon. – 2022-00

Page: 65

Horizontal Datum: WisCRS – Lincoln County Zone – NAD83(2011)

Date / time of initial measurement:

November 8, 2022 - Start 14:47:10 CST – End 15:07:56 CST

Reference monuments:

4 – Set - 7/8" diameter X 30" long iron rods with 2" diameter Lincoln Co. aluminum cap.

#### Coordinate Table

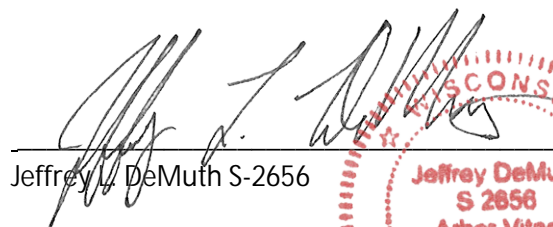
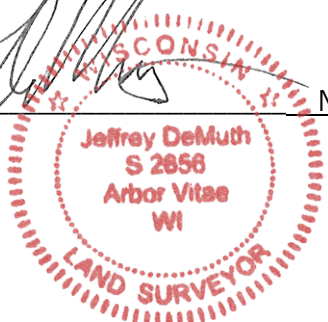
	County Provided	2022 Measurement	Difference
North	221904.824	221944.870	-40.05
East	460315.999	460304.020	11.98

Observed coordinates do not match existing calculated coordinates. Reason – existing coordinates were calculated - monument found.

Request Data Log for more information.

Additional Notes:

Monument extends ±13" above grade.

  
 Jeffrey L. DeMuth S-2656
 
 November 15, 2022  
 Date

43408010000\_Mon-N



43408010000\_North



43408010000\_West



4340801000\_South



4340801000\_East

