

U.S. PUBLIC LAND SURVEY MONUMENT RECORD

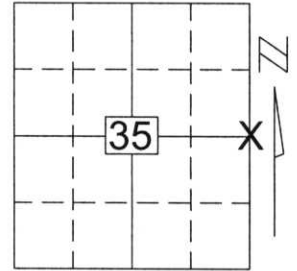
Note: This form is intended and designed to fulfill all requirements of Wisconsin Administrative Code, Chapter A-E 5.02, U.S. Public Land Survey Monument Record (3)(a)(b)(c)(d)(e)(f)(g)(h)(i). An additional sheet may be added if necessary to conform with said requirements.

(a) Corner location: Township 34 North

Range 7 East

Town/City/Village SKANAWAN

County LINCOLN

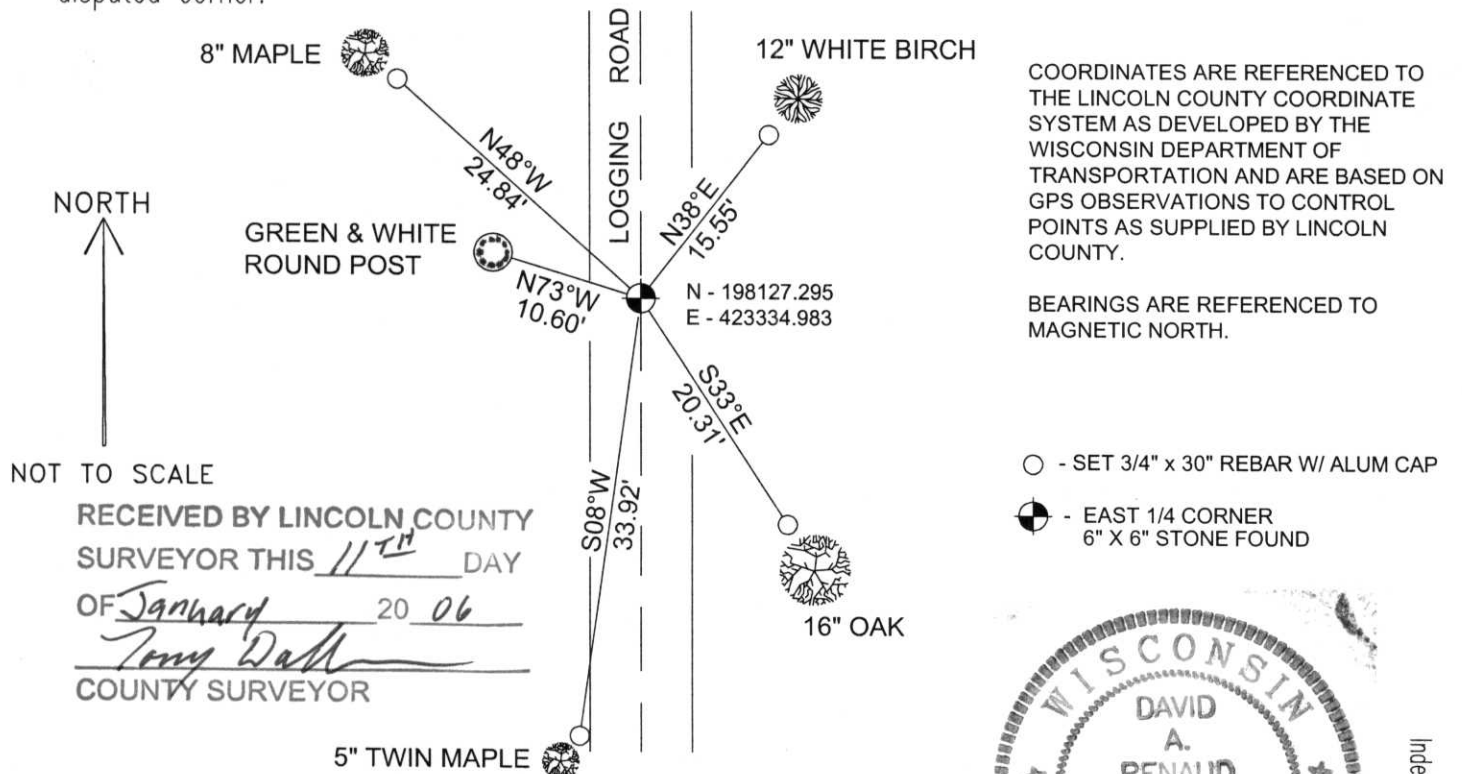


Section 35

(b)(f)(g)(h) Description of monument found at this corner and if it was accepted, state all evidence (material, testimonial, occupational, plats, records, other monuments) used as a basis for accepting. If not accepted or if nothing was found, state evidence used as basis for establishing location. If reestablished through lost corner proportionate methods, indicate all monuments, distances and directions used to establish.

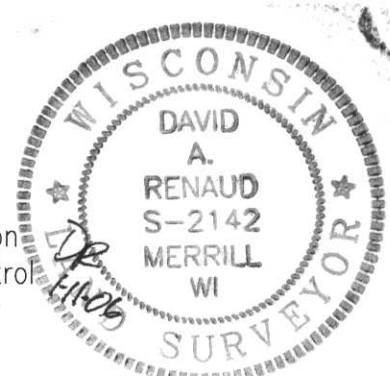
I FOUND NO EVIDENCE OF THE CORNER'S ORIGINAL MARKER OR WITNESS TREES.
 I FOUND A 6-IN. X 6-IN. STONE PRESUMABLY SET BY FUCHS IN THE 1930'S. I
 ACCEPTED THE STONE AS THE BEST AVAILABLE EVIDENCE OF THE CORNER'S
 ORIGINAL LOCATION AND TIED THE CORNER AS SHOWN BELOW.

(c)(d)(e) Plan view of corner with ties to at least 4 witness monuments. If in disagreement with previously established corner, show the distances between the two corners and also indicate the ties to the disputed corner.



(i) I, David A. Renaud, RLS S-2142, certify that the corner location on this record was determined by me or under my direction and control and that this U.S. Public Land Survey Monument Record is correct and complete to the best of my knowledge and belief.

David Renaud 1-11-06
 Signature Date



Index No. 353475

W-21