

Attachment to Tie Sheet Y-19, T34N, R7E

43407350020

I visited the corner on 7/09/2019 to verify the corner and reference tie monumentation. I found the 6" X 6" Granite Monument, down 8", and all 4 ties from the David Renaud tie sheet (12/20/2005). The SW tie was uprooted from a wind thrown Balsam, reset the capped rebar at the record bearing and distance; the SE tie measured 41.29' (41.41'R) in wet swamp. The established Coordinates and ties agree with existing monument.

Anthony R. Dallman 9/09/2020

Anthony R. Dallman, PLS-2405

Lincoln County Surveyor



U.S. PUBLIC LAND SURVEY MONUMENT RECORD

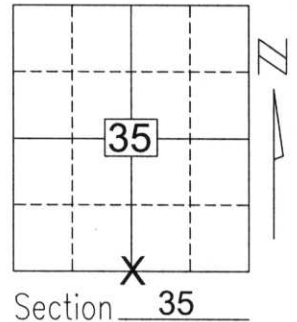
Note: This form is intended and designed to fulfill all requirements of Wisconsin Administrative Code, Chapter A-E 5.02, U.S. Public Land Survey Monument Record (3)(a)(b)(c)(d)(e)(f)(g)(h)(i). An additional sheet may be added if necessary to conform with said requirements.

(a) Corner location: Township 34 North

Range 7 East

Town/City/Village SKANAWAN

County LINCOLN

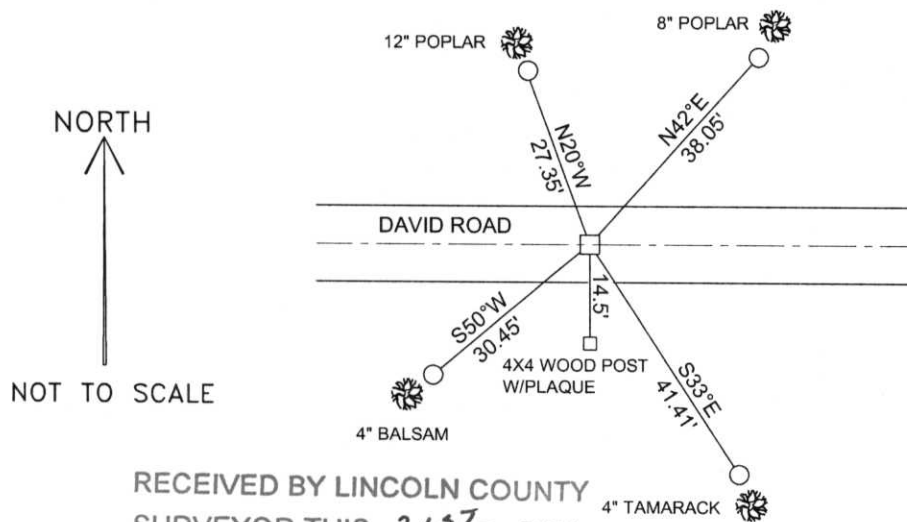


Section 35

(b)(f)(g)(h) Description of monument found at this corner and if it was accepted, state all evidence (material, testimonial, occupational, plats, records, other monuments) used as a basis for accepting. If not accepted or if nothing was found, state evidence used as basis for establishing location. If reestablished through lost corner proportionate methods, indicate all monuments, distances and directions used to establish.

I found no evidence of the corner's original marker or witness trees. I found a scribed 6-in. x 6-in. stone at the corner that is shown on filed surveys as being at the corner, and is similar to those set by Fuchs in the 1930's to perpetuate the original corner markers in this Township. I accepted the stone as the best available evidence of the corner's original location and tied as shown below.

(c)(d)(e) Plan view of corner with ties to at least 4 witness monuments. If in disagreement with previously established corner, show the distances between the two corners and also indicate the ties to the disputed corner.



COORDINATES ARE REFERENCED TO THE LINCOLN COUNTY COORDINATE SYSTEM AS DEVELOPED BY THE WISCONSIN DEPARTMENT OF TRANSPORTATION AND WERE DETERMINED BY GPS OBSERVATIONS ON CONTROL POINTS AS SUPPLIED BY LINCOLN COUNTY.

BEARINGS ARE REFERENCED TO MAGNETIC NORTH.

N - 195491.431
E - 420601.702

○ - SET 3/4" x 30" REBAR W/ ALUM CAP

□ - FOUND 6X6 STONE 6 INCHES BELOW ROAD SURFACE

RECEIVED BY LINCOLN COUNTY SURVEYOR THIS 21ST DAY OF December 20 05
David Renaud
COUNTY SURVEYOR

(i) I, David A. Renaud, RLS S-2142, certify that the corner location on this record was determined by me or under my direction and control and that this U.S. Public Land Survey Monument Record is correct and complete to the best of my knowledge and belief.

David Renaud Signature 12/20/05 Date



1-19