

U.S. PUBLIC LAND SURVEY MONUMENT RECORD

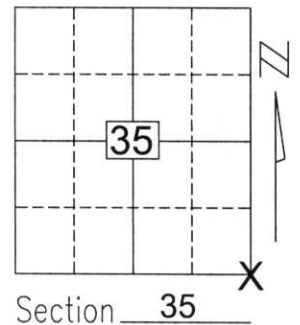
Note: This form is intended and designed to fulfill all requirements of Wisconsin Administrative Code, Chapter A-E 5.02, U.S. Public Land Survey Monument Record (3)(a)(b)(c)(d)(e)(f)(g)(h)(i). An additional sheet may be added if necessary to conform with said requirements.

(a) Corner location: Township 34 North

Range 7 East

Town/City/Village SKANAWAN

County LINCOLN

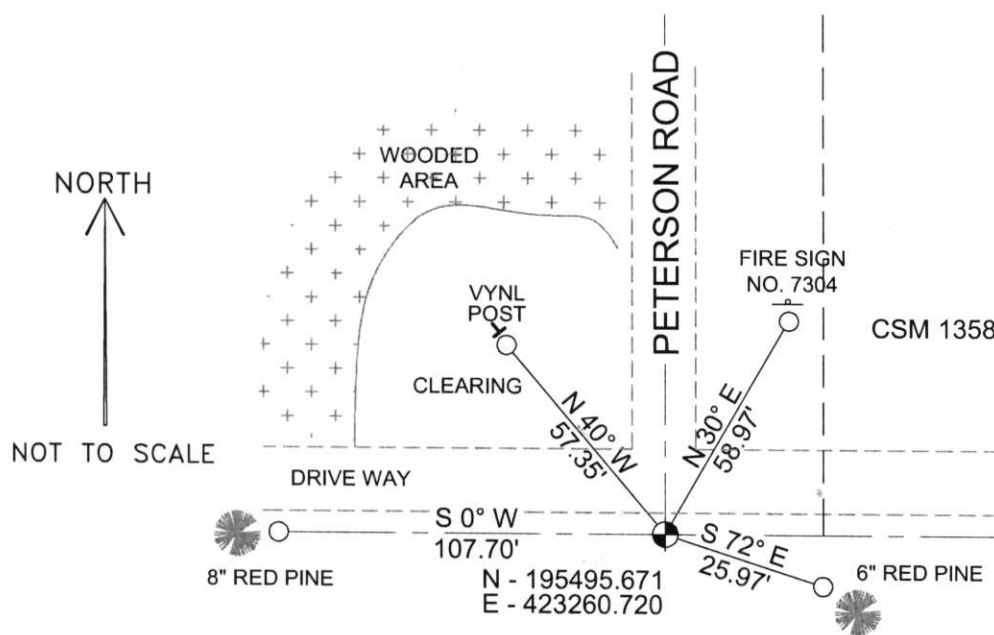


(b)(f)(g)(h) Description of monument found at this corner and if it was accepted, state all evidence (material, testimonial, occupational, plats, records, other monuments) used as a basis for accepting. If not accepted or if nothing was found, state evidence used as basis for establishing location. If reestablished through lost corner proportionate methods, indicate all monuments, distances and directions used to establish.

I found no evidence of the corner's original marker or witness trees. Very little usable evidence of occupation or other indications of the corner's original location was found. I located the centerline of Peterson Road between Sections 35 & 36, the centerline of David Road along the South lines of Sections 35 & 36, the centerline of Grundy Road South of this corner between Sections 1 & 2, T33N, R7E, and Certified Survey Map No. 1358, which shows the corner as being a "1" IRON SPIKE." I did not find the spike, but accepted the corner location as shown on Certified Survey Map 1358, which agreed within reason with the intersection of the above described centerlines, as the best available evidence of the corner's original location. I set a Lincoln Co. Berntsen monument at the corner and tied as shown below.

RECEIVED BY LINCOLN COUNTY
SURVEYOR THIS 21ST DAY
OF December 20 05
Tommy Dahl
COUNTY SURVEYOR

(c)(d)(e) Plan view of corner with ties to at least 4 witness monuments. If in disagreement with previously established corner, show the distances between the two corners and also indicate the ties to the disputed corner.



COORDINATES ARE REFERENCED TO THE LINCOLN COUNTY COORDINATE SYSTEM AS DEVELOPED BY THE WISCONSIN DEPARTMENT OF TRANSPORTATION AND ARE BASED ON GPS OBSERVATIONS TO CONTROL POINTS AS SUPPLIED BY LINCOLN COUNTY.

BEARINGS ARE REFERENCED TO MAGNETIC NORTH.

- - SET 3/4" x 30" REBAR W/ ALUM CAP
- - SOUTHEAST 1/4 CORNER BERNTSEN MONUMENT SET



(i) I, David A. Renaud, RLS S-2142, certify that the corner location on this record was determined by me or under my direction and control and that this U.S. Public Land Survey Monument Record is correct and complete to the best of my knowledge and belief.

David Renaud 12/20/05
Signature Date

Index No. 353478

1-21

