

# U.S. PUBLIC LAND SURVEY MONUMENT RECORD

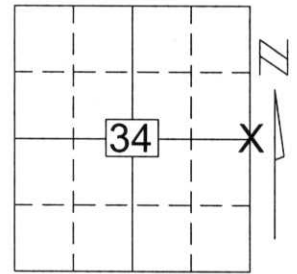
Note: This form is intended and designed to fulfill all requirements of Wisconsin Administrative Code, Chapter A-E 5.02, U.S. Public Land Survey Monument Record (3)(a)(b)(c)(d)(e)(f)(g)(h)(i). An additional sheet may be added if necessary to conform with said requirements.

(a) Corner location: Township 34 North

Range 7 East

Town/City/Village SKANAWAN

County LINCOLN

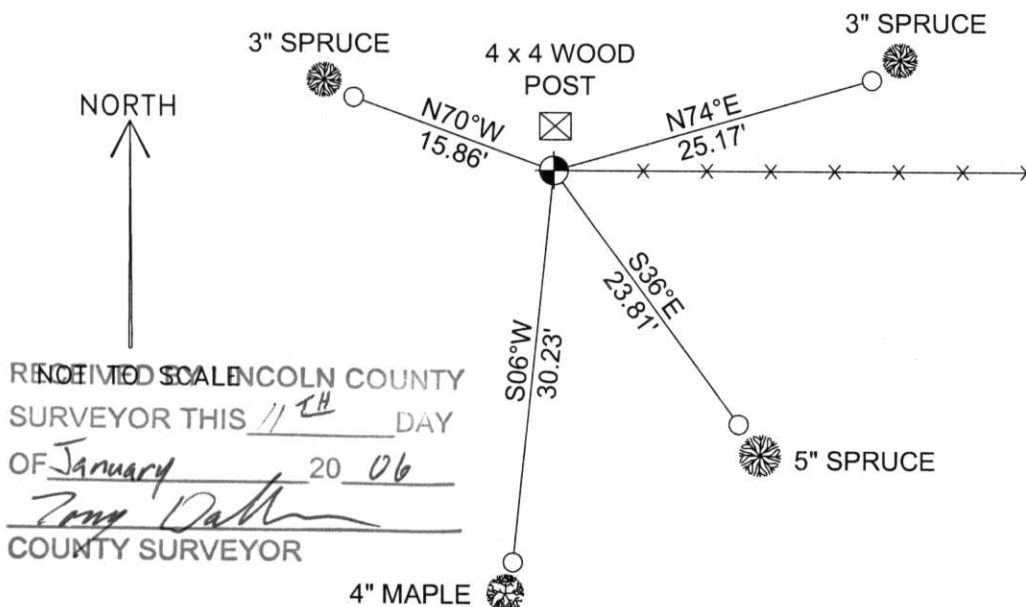


Section 34

(b)(f)(g)(h) Description of monument found at this corner and if it was accepted, state all evidence (material, testimonial, occupational, plats, records, other monuments) used as a basis for accepting. If not accepted or if nothing was found, state evidence used as basis for establishing location. If reestablished through lost corner proportionate methods, indicate all monuments, distances and directions used to establish.

I FOUND NO EVIDENCE OF CORNER'S ORIGINAL MARKER OF WITNESS TREES. I FOUND A ONE INCH IRON PIPE WITH A FOUR BY FOUR WOOD GUARD POST TO THE NORTH OF THE PIPE. THIS PIPE IS SHOWN AS BEING AT THE CORNER ON OWENS-ILLINOIS MAPS FILED AT THE COUNTY SURVEYORS OFFICE. I ACCEPTED THE PIPE AS THE BEST AVAILABLE EVIDENCE OF THE CORNER'S ORIGINAL LOCATION AND TIED AS SHOWN BELOW.

(c)(d)(e) Plan view of corner with ties to at least 4 witness monuments. If in disagreement with previously established corner, show the distances between the two corners and also indicate the ties to the disputed corner.



COORDINATES ARE REFERENCED TO THE LINCOLN COUNTY COORDINATE SYSTEM AS DEVELOPED BY THE WISCONSIN DEPARTMENT OF TRANSPORTATION AND ARE BASED ON GPS OBSERVATIONS TO CONTROL POINTS AS SUPPLIED BY LINCOLN COUNTY.

BEARINGS ARE REFERENCED TO MAGNETIC NORTH.

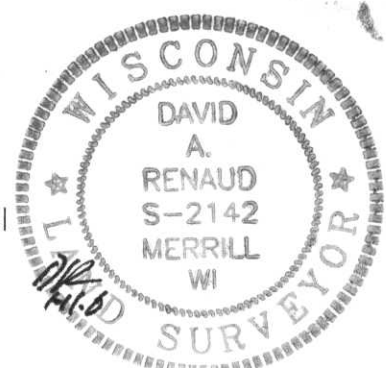
N- 198149.904

E- 418006.420

○ - SET 3/4" x 30" REBAR W/ ALUM CAP

⊗ - EAST 1/4 CORNER  
1" IRON PIPE FOUND

RECEIVED BY LINCOLN COUNTY SURVEYOR THIS 11<sup>TH</sup> DAY OF January 20 06  
David Renaud  
COUNTY SURVEYOR



(i) I, David A. Renaud, RLS S-2142, certify that the corner location on this record was determined by me or under my direction and control and that this U.S. Public Land Survey Monument Record is correct and complete to the best of my knowledge and belief.

David Renaud 1-11-06  
Signature Date

Index No. 343475

4-17