

U.S. PUBLIC LAND SURVEY MONUMENT RECORD

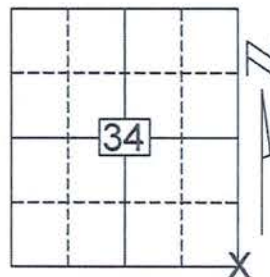
Note: This form is intended and designed to fulfill all requirements of Wisconsin Administrative Code, Chapter A-E 5.02, U.S. Public Land Survey Monument Record (3)(a)(b)(c)(d)(e)(f)(g)(h)(i). An additional sheet may be added if necessary to conform with said requirements.

(a) Corner location: Township 34 North

Range 7 East

Town/City/Village SKANAWAN

County LINCOLN



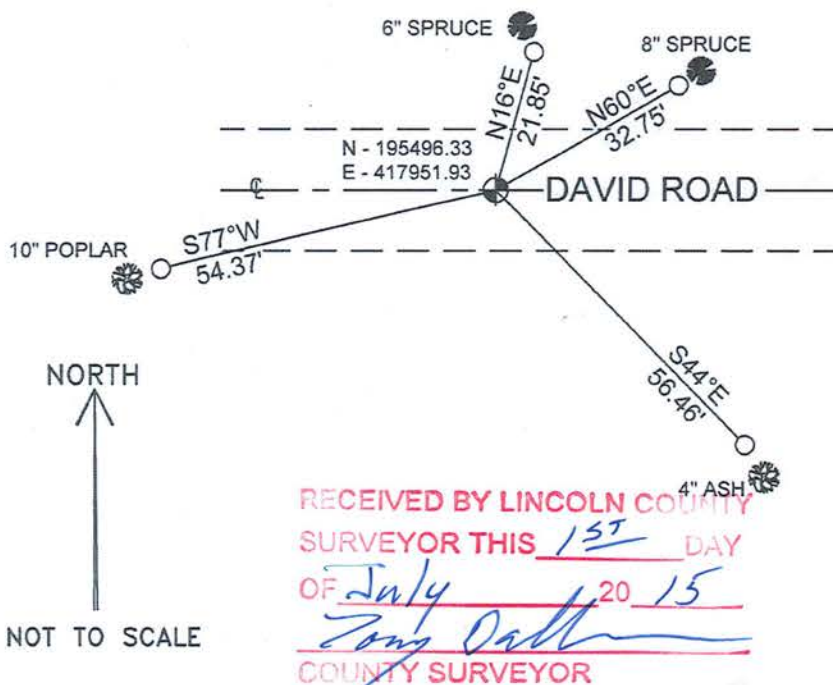
Section 34

(b)(f)(g)(h) Description of monument found at this corner and if it was accepted, state all evidence (material, testimonial, occupational, plats, records, other monuments) used as a basis for accepting. If not accepted or if nothing was found, state evidence used as basis for establishing location. If reestablished through lost corner proportionate methods, indicate all monuments, distances and directions used to establish.

12/20/05 - David Renaud found no evidence of the corner's original marker or witness trees. He found and measured to adjacent section corners on the south line of this township, and iron pipes set at 1/16th corners next to this corner. He used the evidence as described above in combination with filed survey maps as the best available evidence of the corner's original location and determined a location to best fit all found and mapped monuments. He set a Lincoln Co. Berntsen monument at the corner and tied as shown below.

7/1/15 - Berntsen monument was found broken in the location set by Renaud in 2005. A better position has been determined for the location of this monument, based on measurements from the South 1/4 corner and South 1/16th corner and the East 1/4 and the East 1/16th corner. The new position of this corner was determined by doubling over the distance between the South 1/4 corner and South 1/16th corner and the East 1/4 and the East 1/16th corner and using the midpoint between the ends of these two lines. The broken Berntsen monument was removed and a 1 1/4 inch bar was set 1 foot below the road surface at the new position.

(c)(d)(e) Plan view of corner with ties to at least 4 witness monuments. If in disagreement with previously established corner, show the distances between the two corners and also indicate the ties to the disputed corner.



COORDINATES ARE REFERENCED TO THE LINCOLN COUNTY COORDINATE SYSTEM AS DEVELOPED BY THE WISCONSIN DEPARTMENT OF TRANSPORTATION AND ARE BASED ON GPS OBSERVATIONS TO CONTROL POINTS AS SUPPLIED BY LINCOLN COUNTY.

BEARINGS ARE REFERENCED TO MAGNETIC NORTH.

○ - SET 3/4" x 30" REBAR W/ ALUM CAP

⊙ - SOUTHEAST CORNER
1 1/4 IN. X 18 IN. BAR WEIGHING
4.303 LBS./LIN. FT SET

RECEIVED BY LINCOLN COUNTY
SURVEYOR THIS 1ST DAY
OF July 20 15
Joshua W. Prentice
COUNTY SURVEYOR



Index No. 343478

(i) I, Joshua W. Prentice, PLS S-2852, certify that the corner location on this record was determined by me or under my direction and control and that this U.S. Public Land Survey Monument Record is correct and complete to the best of my knowledge and belief.

Signature

Date

7-1-2015

4-17

