

Attachment to Tie Sheet Y-9, T34N, R7E

43407320000

I visited the corner on 6/01/2018 to verify the corner and reference tie monumentation. I found the Berntsen monument and all 4 ties from David Renaud tie sheet (12/19/2005). Ties appear to be measured as slope distances, I measured horizontal distances follows:

Westerly tie, 38.68' (38.79') tree near tie is a 7" Balsam (3" Spruce); Northerly tie, 28.46' (28.58') tree near tie is a 6" Balsam snapped off about 5' high (6" Spruce); Southeasterly tie, 30.60' (36.60') tree near tie is a 7" Maple (4" Oak); Southwesterly tie, 28.14' (28.14') tree near tie is a 4" Balsam snapped off about 3' high.

NOTE

- Coordinates on Tie Sheet did not check well, coordinates for Corner check with:
WCCS, Lincoln County, NAD 83 (91) US Survey Feet
N 195520.382
E 407333.459

 6/12/18

Anthony R. Dallman, PLS-2405

Lincoln County Surveyor



U.S. PUBLIC LAND SURVEY MONUMENT RECORD

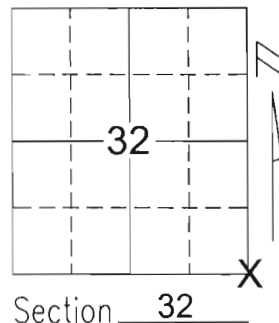
Note: This form is intended and designed to fulfill all requirements of Wisconsin Administrative Code, Chapter A-E 5.02, U.S. Public Land Survey Monument Record (3)(a)(b)(c)(d)(e)(f)(g)(h)(i). An additional sheet may be added if necessary to conform with said requirements.

(a) Corner location: Township 34 North

Range 7 East

Town/City/Village SKANAWAN

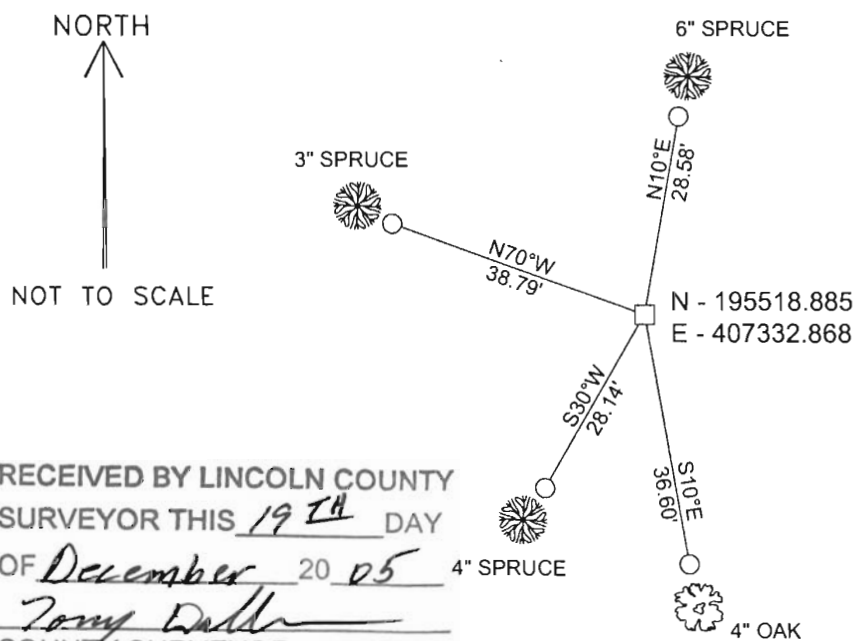
County LINCOLN



(b)(f)(g)(h) Description of monument found at this corner and if it was accepted, state all evidence (material, testimonial, occupational, plats, records, other monuments) used as a basis for accepting. If not accepted or if nothing was found, state evidence used as basis for establishing location. If reestablished through lost corner proportionate methods, indicate all monuments, distances and directions used to establish.

I found no evidence of the corner's original marker or witness trees. I found a scribed 6-in. x 6-in. granite stone similar to stones set elsewhere in this township by Fuchs in the 1930's to perpetuate the original corner monumentation. I accepted the stone as the best available evidence of the corner's original location and tied as shown below.

(c)(d)(e) Plan view of corner with ties to at least 4 witness monuments. If in disagreement with previously established corner, show the distances between the two corners and also indicate the ties to the disputed corner.



COORDINATES ARE REFERENCED TO THE LINCOLN COUNTY COORDINATE SYSTEM AS DEVELOPED BY THE WISCONSIN DEPARTMENT OF TRANSPORTATION AND ARE BASED ON GPS OBSERVATIONS TO CONTROL POINTS AS SUPPLIED BY LINCOLN COUNTY.

BEARINGS ARE REFERENCED TO MAGNETIC NORTH.

- - SET 3/4" x 30" REBAR W/ ALUM CAP
- - FOUND 6" x 6" GRANITE STONE WITH SCRIBED "X"

RECEIVED BY LINCOLN COUNTY SURVEYOR THIS 19TH DAY OF December 20 05
Tony Diller
 COUNTY SURVEYOR

(i) I, David A. Renaud, RLS S-2142, certify that the corner location on this record was determined by me or under my direction and control and that this U.S. Public Land Survey Monument Record is correct and complete to the best of my knowledge and belief.

David Renaud 12/19/05
 Signature Date



Index No. 323478

1-9

A photograph of a field site. A white vertical marker with the number '323478' is placed on a concrete block. The background consists of a forest floor with fallen branches, ferns, and a small stream or wet area. The number is oriented vertically, reading from top to bottom.

323478









