

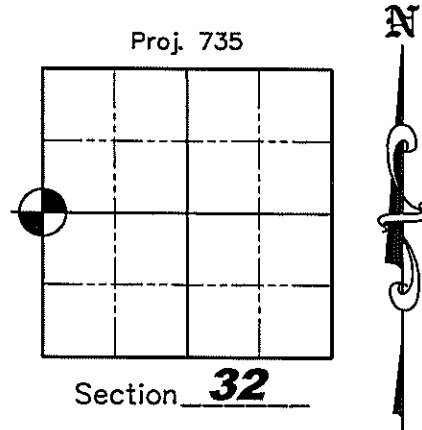
# U.S. PUBLIC LAND SURVEY MONUMENT RECORD

NOTE: This form is intended and designed to fulfill all requirements of Wisconsin Administrative Code, Chapter A-E 7.08 U.S. Public Land Survey Monument Record (3)(a)(b)(c)(d)(e)(f)(g)(h)(i). An additional sheet may be added if necessary to conform with said requirements.

(a) Corner location: Township 34 North  
 Range 7 East/West

Township SKANAWAN

County LINCOLN



(b)(f)(g)(h) Description of monument found at this corner and if it was accepted, state all evidence (material, testimonial, occupation, plats, records, other monuments) used as a basis for accepting. If not accepted or if nothing was found, state evidence used as a basis for establishing location. If reestablished through lost corner proportionate methods, indicate all monuments, distances and directions used to establish. Indicate type of monument found or set and sign post.

December 1854 – Jackson L. Prentice set original 1/4 post; BT's: Tamarack 8", East, 22 links; Birch 10", S29°W, 10 links

October 11, 1993 – Devon Vanden Heuvel found no evidence of the original corner or it's accessories. His research indicated no remonumentation of this corner since the original survey was performed. The only reference to the possible location of this corner was on a survey performed by land surveyor Dave Tlusty in May 1981. Dave Tlusty performed a survey in the adjacent Section and on this survey he shows a fence line with a dimension from the NW corner of Section 32. He did find an extremely old fence which would date back to the early part of the century. This fence line was running in both directions from the corner location. He set a 3/4" by 24" iron rebar at the intersection of the old fence line and the centerline of County Highway "H". He set 4 BTs: (to 60d nails in sides of trees) 9" Popple N45°E, 57.51'; 7" Maple S80°E, 44.39'; 11" Maple S70°W, 61.77'; 14" Red Pine N75°W, 64.12'.

October 3, 2006 – Matthew E. Hogleund, S-1910: Found no monument but, found all 4 BTs made by Devon Vanden Heuvel in 1993 and set a Survey Nail at the corner location. We witnessed the corner as shown hereon.

(c)(d)(e) Plan view of corner with ties to at least 4 witness monuments. If in disagreement with previously established corner, show the distances between the two corners and also indicate the ties to the disputed corner.



Scale: 1" = 50'

20" Double Red Pine

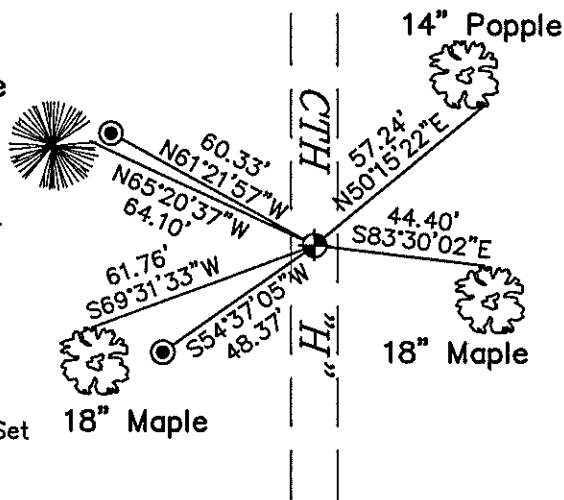
Note:

We found a 60 P Nail in the side of all four bearing trees

## Legend

⊕ Berntsen Survey Nail Set

⊙ 7/8" X 30" Aluminum Capped Rebar Set



(i) I, Matthew E. Hogleund, certify that the corner location on this record was determined by me under my direction and control and that this U.S. Public Land Survey Monument is correct and complete to the best of my knowledge and belief.

Signature

MATTHEW E.  
 HOGLEUND  
 S-1910  
 TOMAHAWK  
 WI

Date

11/3/2008

RECEIVED BY LINCOLN COUNTY  
 SURVEYOR THIS 4<sup>TH</sup> DAY  
 OF November 20 08  
 Tony Dahl  
 COUNTY SURVEYOR

W-5

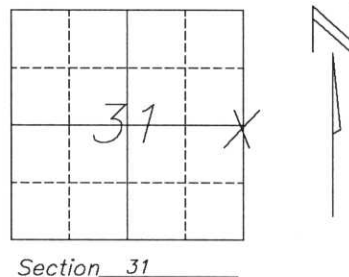
# U.S. PUBLIC LAND SURVEY MONUMENT RECORD

NOTE: This form is intended and designed to fulfill all requirements of Wisconsin Administrative Code, Chapter A-E 7.08 U.S. Public Land Survey Monument Record (3) (a)(b)(c)(d)(e)(f)(g)(h)(i). An additional sheet may be added if necessary to conform with said requirements.

(a) Corner location: Township 34 North  
 Range 7 East/West

Town/City/Village SKANAWAN

County LINCOLN



Section 31

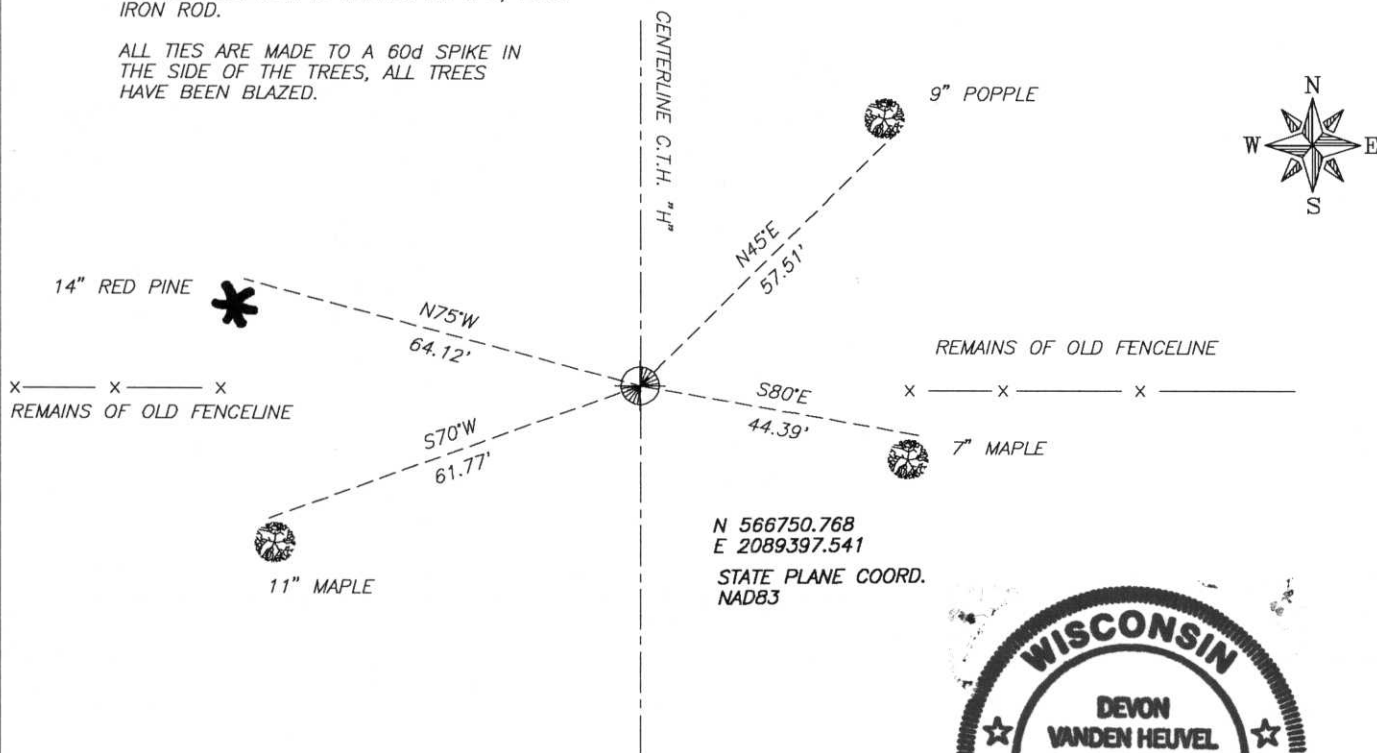
(b)(f)(g)(h) Description of monument found at this corner and if it was accepted, state all evidence (material, testimonial, occupational, plats, records, other monuments) used as a basis for accepting. If not accepted or if nothing was found, state evidence used as basis for establishing location. If reestablished through lost corner proportionate methods, indicate all monuments, distances and directions used to establish. Indicate type of monument found or set and sign post.

NO EVIDENCE OF THE ORIGINAL CORNER OR IT'S ACCESSORIES WAS FOUND AT THE CORNER LOCATION. MY RESEARCH INDICATED NO REMONUMENTATION OF THIS CORNER SINCE THE ORIGINAL SURVEY WAS PERFORMED. RECORDS WHICH WERE REVIEWED INCLUDE THE REGISTER OF DEEDS OFFICE, THE COUNTY SURVEYOR'S OFFICE AND THE LINCOLN COUNTY HIGHWAY DEPARTMENT. THE ONLY REFERENCE TO THE POSSIBLE LOCATION OF THIS CORNER WAS ON A SURVEY PERFORMED BY LAND SURVEYOR DAVE TLUSTY IN MAY OF 1981. MR. TLUSTY PERFORMED A SURVEY IN THE ADJACENT SECTION (SECTION 32). ON THIS SURVEY HE SHOWS A FENCELINE WITH A DIMENSION FROM THE NORTHWEST CORNER OF SECTION 32. MY FIELD INVESTIGATION FOUND NO EVIDENCE OF MONUMENTATION AT THIS CORNER, THERE WAS HOWEVER EVIDENCE OF AN EXTREMELY OLD FENCE WHICH WOULD DATE BACK TO THE EARLY PART OF THE CENTURY. THIS FENCE LINE WAS RUNNING IN BOTH DIRECTIONS FROM THE CORNER. UPON REVIEW OF ALL EVIDENCE BOTH THE RECORDED AND THE EXTRINSIC EVIDENCE I DETERMINED THE LOCATION OF THE CORNER WAS BEST REPRESENTED BY THE LOCATION OF THE FENCES AND THE HIGHWAY. I RESET THE CORNER AT THIS LOCATION AND MADE WITNESSES AS SHOWN BELOW.

(c)(d)(e) Plan view of corner with ties to at least 4 witness monuments. If in disagreement with previously established corner, show the distances between the two corners and also indicate the ties to the disputed corner.

NOTE: CORNER LOCATION IS MARKED BY A 3/4"x24" IRON ROD.

ALL TIES ARE MADE TO A 60d SPIKE IN THE SIDE OF THE TREES, ALL TREES HAVE BEEN BLAZED.



N 566750.768  
 E 2089397.541  
 STATE PLANE COORD.  
 NAD83



(i), DEVON VANDEN HEUVEL

(type or print name) certify that the corner location of this record was determined by me or under my direction and control and that this U.S. Public Land Survey Monument Record is correct and complete to the best of my knowledge and belief.

Devon Vanden Heuvel 10/11/93

Signature

Date

Stamp

Index No. W-5