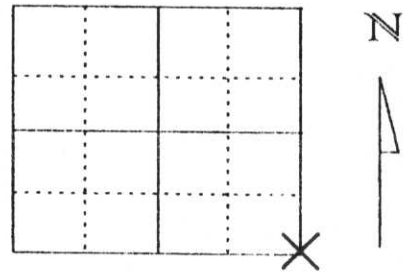


U.S. PUBLIC LAND SURVEY MONUMENT RECORD

Note: This form is intended and designed to fulfill all requirements of Wisconsin Administrative Code, Chapter A-E 5.02, U.S. Public Land Survey Monument Record (3) (a) (b) (c) (d) (e) (f) (g) (h) (i). An additional sheet may be added if necessary to conform with said requirements.

(a) Corner location: Township 34 North
 Range 7 East
 Town/City/Village SKANAWAN
 County Lincoln



Section 31

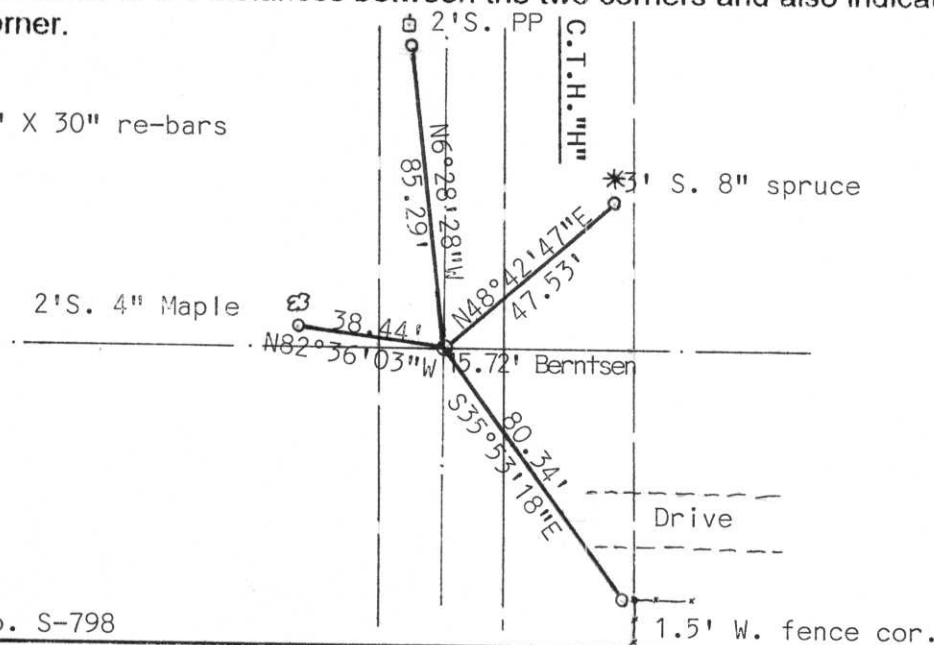
(b) (f) (g) (h) Description of monument found at this corner and if it was accepted, state all evidence (material, testimonial, occupational, plats, records, other monuments) used as a basis for accepting. If not accepted or if nothing was found, state evidence used as basis for establishing location. If reestablished through lost corner proportionate methods, indicate all monuments, distances and directions used to establish.

Original corner was wood post with bearing tree accessories. Did not find any original evidence. Found nail set by Lester Schmidt who measured south line of section 31, but did not set section corners. We spoke with employee of Schmidt's named Mickey. Included point in Section traverse, nail fit section summary.
 We accepted nail as correct based upon testimony and location. Tied same.

**RECEIVED AT LINCOLN COUNTY
 COURTHOUSE THIS 7th DAY
 OF Oct 19 98
Pat Priebe
 TAX DESCRIPTION OFFICE**

(c) (d) (e) Plan view of corner with ties to at least 4 witness monuments. If in disagreement with previously established corner, show the distances between the two corners and also indicate the ties to the disputed corner.

Witness corners are 3/4" X 30" re-bars with Lincoln Co. caps.



(i) I, Edwin R. Abendroth RLS No. S-798

(type or print name) certify that the corner location on this record was determined by me or under my direction and control and that this U.S. Public Land Survey Monument Record is correct and complete to the best of my knowledge and belief.

Edwin R. Abendroth
 Signature

October 6, 1998
 Date

Index No. Y-5

URVEYING, I

SURVEY MONUMENT LOCATION RECORD

SECTION 31
TOWNSHIP 34 N
RANGE 7 E
LINCOLN
[CITY, VILLAGE, COUNTY]

LANDMARK BENCHMARK

FOUND
SET
RE-SET
RE-TIED

CORNER IDENTITY SE COR SEC 31
DATE OF SURVEY DEC 11, 1979
WEATHER OVERCAST CALM
TEMPERATURE 35°
SURVEY PARTY D. TRUSTY M. MERTENS



BASIS FOR MONUMENT LOCATION

DESCRIBE METHOD OF SURVEY AND CORNER AUTHENTICATION

DUG FOR CORNER WEST OF WEST EDGE OF PAVEMENT OF CTH "H" AND IN LINE WITH FENCE EAST. FENCE TO EAST IS ON SECTION LINE ACCORDING TO WILLIAM PETERSON, LONG TIME AREA RESIDENT. MR. PETERSON REMEMBERS SEEING A STONE AT THIS LOCATION. STONE APPARENTLY REMOVED WHEN HIGHWAY

~~THE SKETCH SHOW HORIZONTAL TIE DISTANCES TO FIXED WITNESS MONUMENTS. DESCRIBE ALL MONUMENTS FOUND OR SET.~~

WAS BUILT. FOUND NOTHING. SET NOTHING.

RECEIVED AT LINCOLN COUNTY
COURTHOUSE THIS _____ DAY
OF _____ 19____

TAX DESCRIPTION OFFICE