

U.S. PUBLIC LAND SURVEY MONUMENT RECORD

NOTE: THIS FORM IS INTENDED AND DESIGNED TO FULFILL ALL REQUIREMENTS OF WISCONSIN ADMINISTRATIVE CODE, CHAPTER A-E 7.08, U.S. PUBLIC LAND SURVEY MONUMENT RECORD (3)(a)(b)(c)(d)(e)(f)(g)(h)(i). ADDITIONAL SHEETS MAY BE NECESSARY TO CONFORM TO SAID REQUIREMENTS.

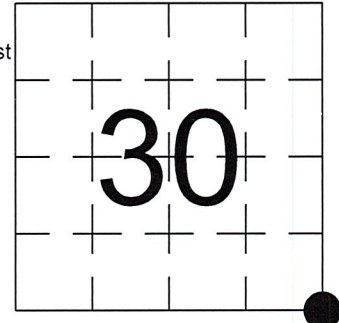
T 34 N, R 7 E

(a) CORNER LOCATION:

SOUTHEAST CORNER, SECTION 30
 TOWNSHIP 34 NORTH
 RANGE 7 EAST
 TOWN OF SKANAWAN
 LINCOLN COUNTY
 WISCONSIN

(b) HISTORY OF ORIGINAL CORNER:

ORIGINAL SURVEYOR: Jackson L. Prentice, Set Post
 COMMENCING DATE: December 11, 1852
 COMPLETION DATE: December 24, 1852
 ORIGINAL BEARING TREES:
 16" Pine; S 54° E; 17 links
 X" Pine; N 11° E; 41 links
 12" Pine; S 9° E; 41 links
 14" Pine; N 82° W; 31 links



(f)(g)(h) DESCRIPTION OF MONUMENT FOUND AT THIS CORNER AND IF IT WAS ACCEPTED. STATE ALL EVIDENCE (MATERIAL, TESTIMONIAL, OCCUPATIONAL, PLATS, RECORDS, OTHER MONUMENTS) USED AS A BASIS FOR ESTABLISHING LOCATION. IF RE-ESTABLISHING THROUGH LOST CORNER PROPORTIONATE METHODS, INDICATE ALL MONUMENTS, DISTANCES, AND DIRECTIONS USED TO ESTABLISH. INDICATE TYPE OF MONUMENTS FOUND OR SET.

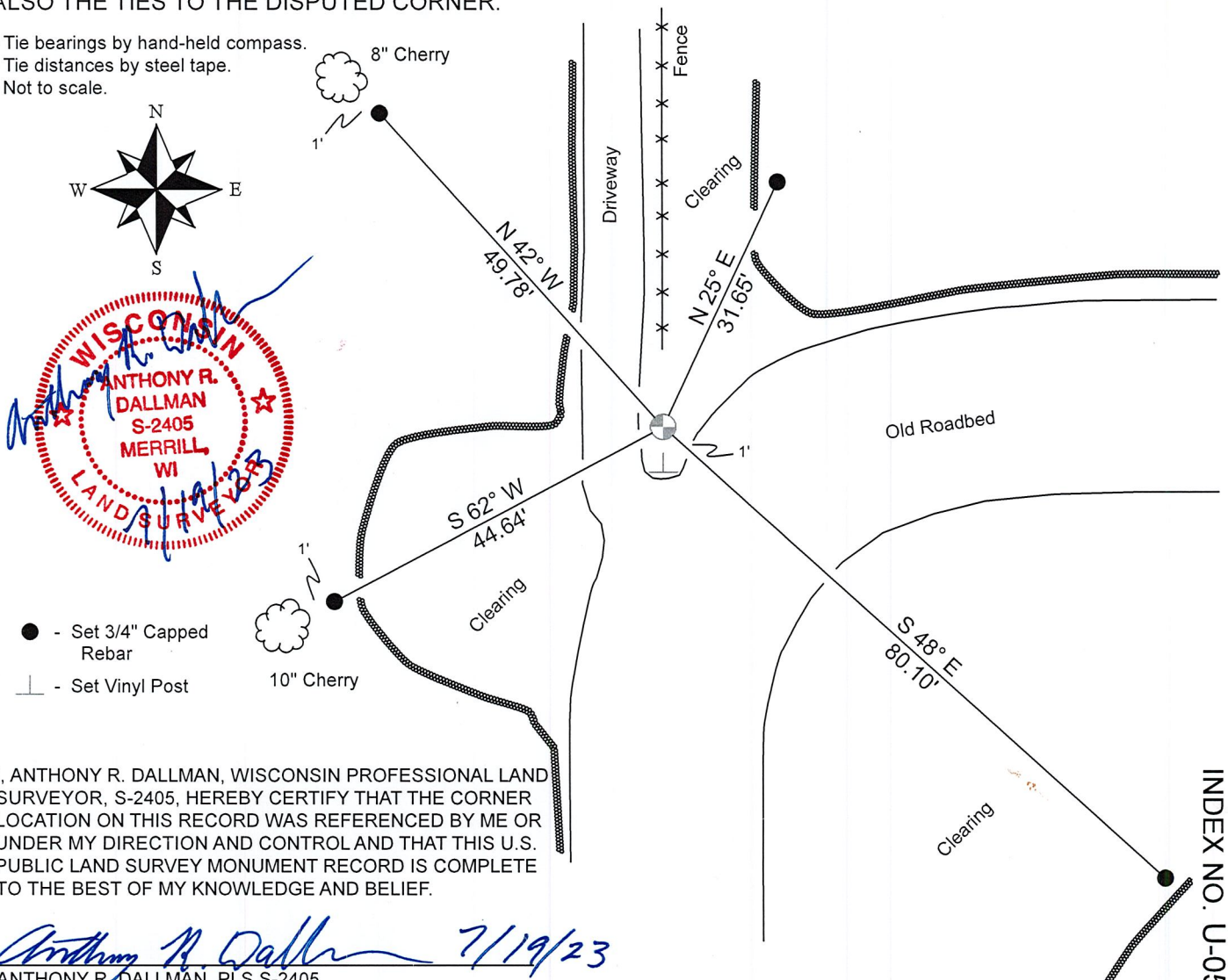
02/1973, Robert Winat, established Corner location during work for the Division of Highways for the relocation of Highway 51.

9/24/1976, Leonard L. Lampert, set a Berntsen Monument at the location established by Robert Winat.

6/08/2023, I, Anthony R. Dallman, PLS-2405, found a Berntsen Monument with the top broken off and the base remaining firm and plumb. I was unable to find any of Lampert's witness trees, I set a new Berntsen Monument at the position of the existing monument base. I accepted this location and set witness monuments, as shown in the sketch below, to further perpetuate the corner location.

(c)(d)(e) PLAN VIEW OF THE CORNER WITH TIES TO AT LEAST FOUR WITNESSES. IF IN DISAGREEMENT WITH PREVIOUSLY ESTABLISHED CORNER, SHOW THE DISTANCES BETWEEN THE TWO CORNERS AND ALSO THE TIES TO THE DISPUTED CORNER.

- Tie bearings by hand-held compass.
- Tie distances by steel tape.
- Not to scale.



I, ANTHONY R. DALLMAN, WISCONSIN PROFESSIONAL LAND SURVEYOR, S-2405, HEREBY CERTIFY THAT THE CORNER LOCATION ON THIS RECORD WAS REFERENCED BY ME OR UNDER MY DIRECTION AND CONTROL AND THAT THIS U.S. PUBLIC LAND SURVEY MONUMENT RECORD IS COMPLETE TO THE BEST OF MY KNOWLEDGE AND BELIEF.

Anthony R. Dallman 7/19/23
 ANTHONY R. DALLMAN, PLS S-2405

INDEX NO. U-05

43407300000

43407300000_Mon-N



43407300000_North

PLEASE
DO NOT
DISTURB
NEARBY

SM
UR
VE
YR

IF THE LOCATION
OF THIS MARKER
IS ENDANGERED
PLEASE CONTACT
COUNTY
SURVEYORS
OFFICE

4340730000_West



4340730000_South



43407300000_East



LEONARD L. LAMPERT
CONSULTING ENGINEER
220 Greenbriar Ave. - Park Ridge
Stevens Point, Wisconsin 54481

CERTIFIED LAND CORNER RESTORATION

Index No. U-5

State of Wisconsin }
County of _____ } ss.

I _____, do hereby certify that on the _____ day of _____, 19____, I found evidence of the _____ corner of _____ Township _____, North, Range _____, Fourth, Principal Meridian, as described hereon; and that from this evidence I established a new monument and accessories as described hereon to perpetuate the original location of this corner.

Resident witnesses:

History of original corner establishment:

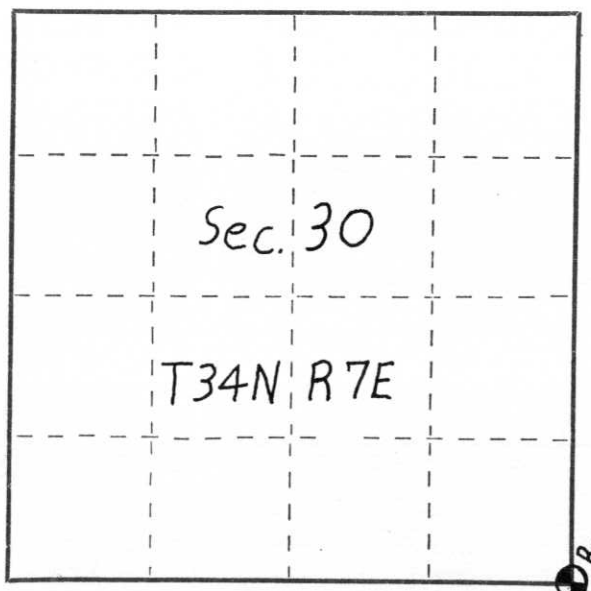
This corner was reestablished by Robert Winat in work done for highway 51.

Description of corner evidence found:

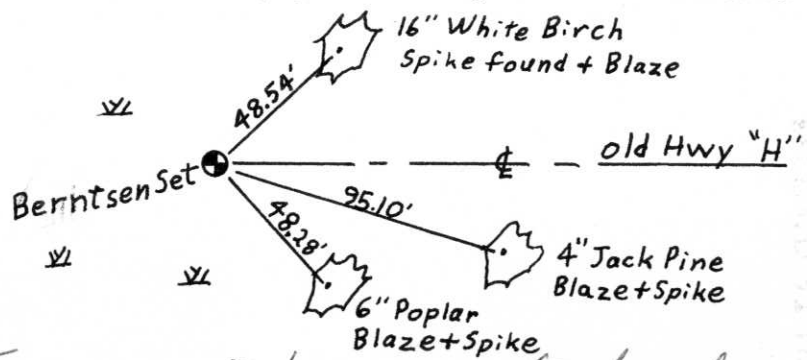
This corner was set at a point established by Robert Winat in work done for the Division of Highways in Feb. 1973. Center lines of roads used as supporting evidence by Winat.



Description of monument and accessories I established to perpetuate the original location of this corner.



○ = Corner monument restored.



Dated at _____, Wis., this 04 day of September, 1976.

Signature Leonard Lampert Title Consulting Engineer Registration No. S-129
(County Surveyor, Registered Land Surveyor, or other duly authorized official)

Office of Register of Deeds, County of _____, I hereby certify that the within instrument was filed in this office for record on the _____ day of _____, 19____ at _____ o'clock _____ M.

(Register of Deeds)

By _____ Deputy