

# U.S. PUBLIC LAND SURVEY MONUMENT RECORD

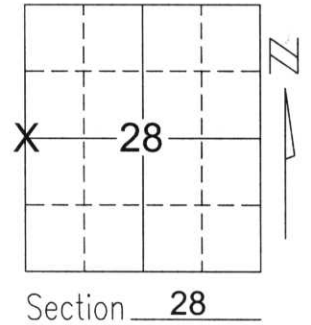
Note: This form is intended and designed to fulfill all requirements of Wisconsin Administrative Code, Chapter A-E 5.02, U.S. Public Land Survey Monument Record (3)(a)(b)(c)(d)(e)(f)(g)(h)(i). An additional sheet may be added if necessary to conform with said requirements.

(a) Corner location: Township 34 North

Range 7 East

Town/City/Village SKANAWAN

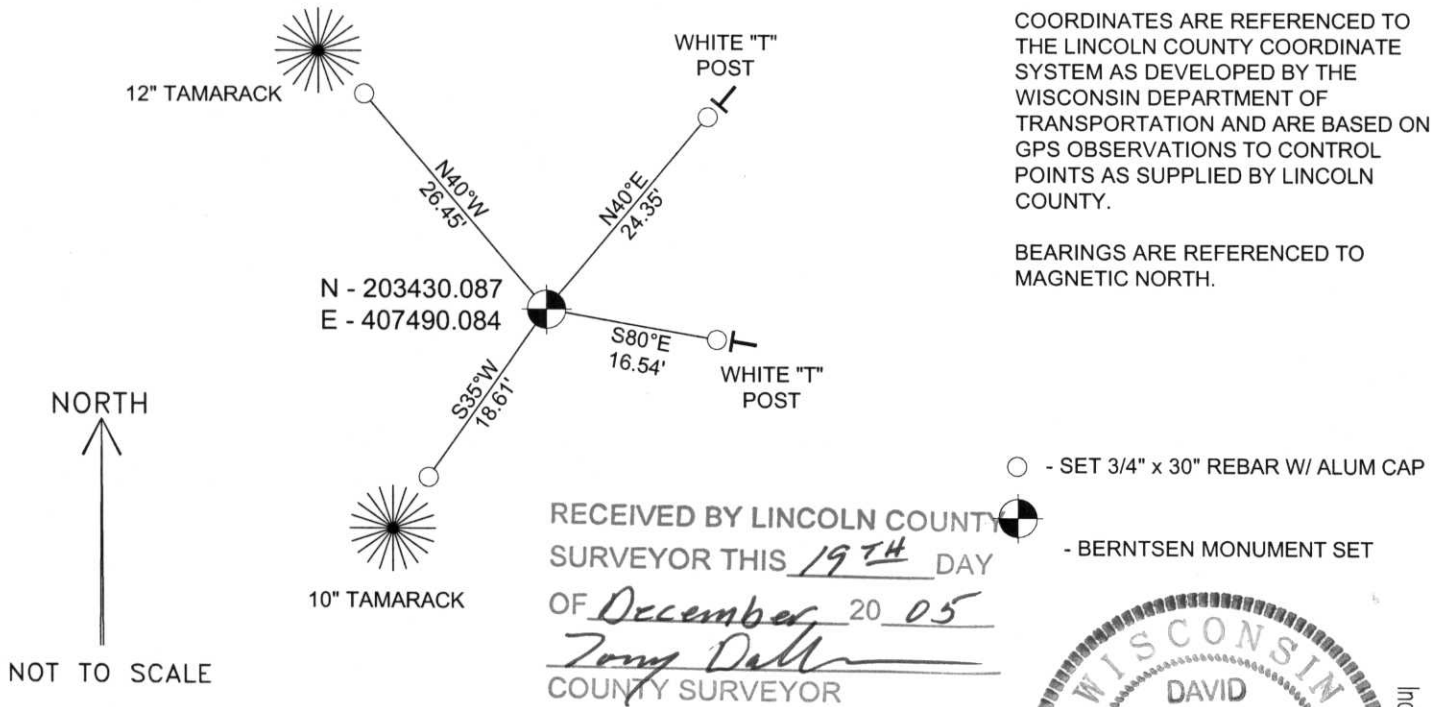
County LINCOLN



(b)(f)(g)(h) Description of monument found at this corner and if it was accepted, state all evidence (material, testimonial, occupational, plats, records, other monuments) used as a basis for accepting. If not accepted or if nothing was found, state evidence used as basis for establishing location. If reestablished through lost corner proportionate methods, indicate all monuments, distances and directions used to establish.

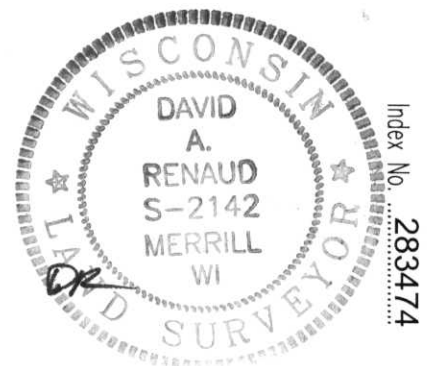
I found no evidence of the corner's original marker or witness trees. I found a broken concrete monument at the corner that fit reasonably well with adjacent section corners when compared to original measurements, and an East & West fence line in Section 29 points to this monument. I accepted the monument as the best available evidence of the corner's original location. I set a Lincoln Co. Berntsen monument at the corner and tied as shown below.

(c)(d)(e) Plan view of corner with ties to at least 4 witness monuments. If in disagreement with previously established corner, show the distances between the two corners and also indicate the ties to the disputed corner.



(i) I, David A. Renaud, RLS S-2142, certify that the corner location on this record was determined by me or under my direction and control and that this U.S. Public Land Survey Monument Record is correct and complete to the best of my knowledge and belief.

David Renaud 12/16/05  
 Signature Date



A photograph showing a close-up of a tree trunk. A white rectangular label is attached to the trunk, oriented vertically. The label contains the number '283474'. To the left of the label, a person's finger is placed against the tree trunk to provide a sense of scale. The tree trunk has a rough, textured bark. The background is dark and filled with dense, dry pine needles and branches, suggesting a forest floor or a thicket of trees.

283474