

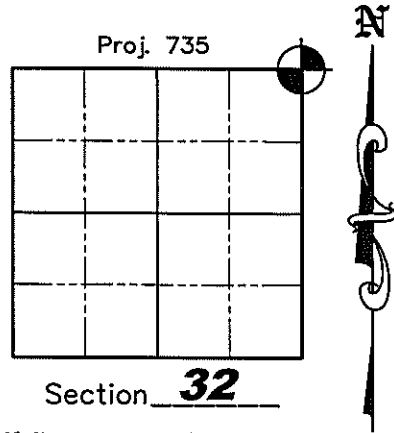
U.S. PUBLIC LAND SURVEY MONUMENT RECORD

NOTE: This form is intended and designed to fulfill all requirements of Wisconsin Administrative Code, Chapter A-E 7 .08 U.S. Public Land Survey Monument Record (3)(a)(b)(c)(d)(e)(f)(g)(h)(i). An additional sheet may be added if necessary to conform with said requirements.

(a) Corner location: Township 34 North
 Range 7 East/West

Township SKANAWAN

County LINCOLN



(b)(f)(g)(h) Description of monument found at this corner and if it was accepted, state all evidence (material, testimonial, occupation, plats, records, other monuments) used as a basis for accepting. If not accepted or if nothing was found, state evidence used as a basis for establishing location. If reestablished through lost corner proportionate methods, indicate all monuments, distances and directions used to establish. Indicate type of monument found or set and sign post.

December 1854— Jackson L. Prentice set wooden post for corner. BTs; 10" Aspen S39°W, 30 links; 10" Pine S48°E, 17 links; 11" Pine N64°E, 20 links; 8" Pine N45°W, 50 links.

July 9, 1984— Lester J. Schmit found a 2" iron pipe 4" below the surface of CTH "H" along with fence lines running Northerly and Southerly from approximate road right-of-way line. Set a 30" Berntsen Monument 1/2" below highway surface. Witnesses; 5/8" rebar S34°E, 34.82'; 1" iron pipe S02°W, 23.57'; 5/8" rebar S49°W, 30.16'; 1" iron pipe N01°E, 23.63'.

January 6, 2006 David A. Renaud said he found a 1" iron bar per his Section Summary. (It is believed this was actually the 1" magnet we also found)

October 3, 2006— Matthew E. Hognlund dug for corner in centerline of County Highway "H". We found and accepted a 1" magnet in a 2-1/2" circle of white powder which is the remains of a deteriorating Berntsen Monument 6" below the surface. The center of the circle also matches the current GPS coordinates on file with the Lincoln County Land Information Office. We did not find any of the Witness corners set by Lester Schmit in 1984. The highway was being repaved that same day, so we waited till they were done and set a Survey Nail as the corner and set new witness corners as shown hereon.

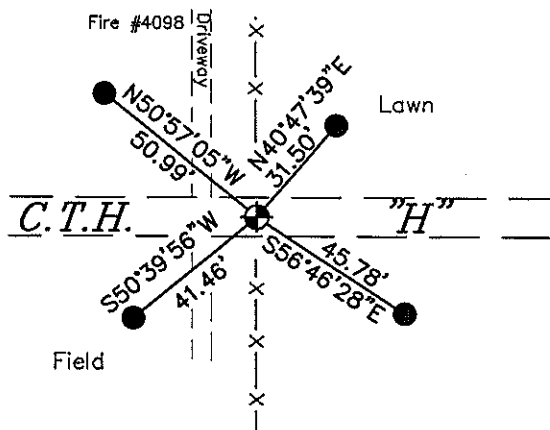
(c)(d)(e) Plan view of corner with ties to at least 4 witness monuments. If in disagreement with previously established corner, show the distances between the two corners and also indicate the ties to the disputed corner.



Scale: 1" = 50'

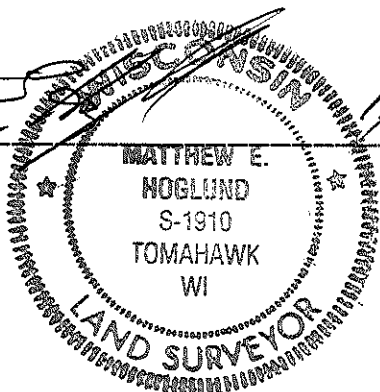
Legend

- Berntsen Survey Nail Set
- 3/4" X 24" Rebar Set



(i) I, Matthew E. Hognlund, certify that the corner location on this record was determined by me under my direction and control and that this U.S. Public Land Survey Monument is correct and complete to the best of my knowledge and belief.

 Signature



Date 11/3/2008
 RECEIVED BY LINCOLN COUNTY
 SURVEYOR THIS 4TH DAY
 OF November 20 08

 COUNTY SURVEYOR

A-9

CERTIFIED LAND CORNER RESTORATION

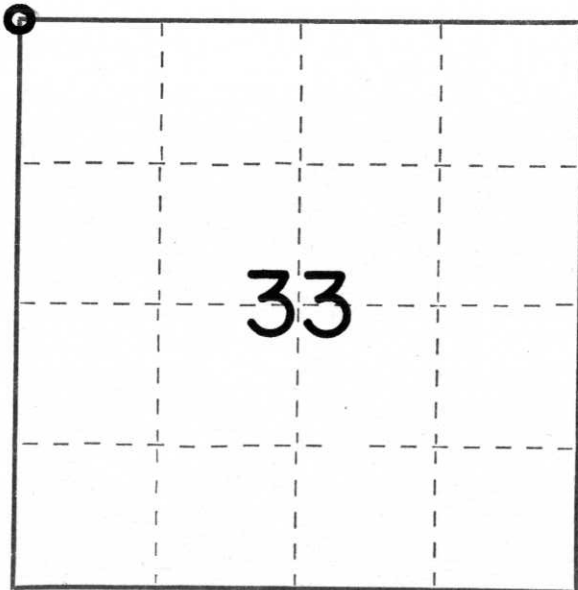
Index No. 0-9

State of Wisconsin }
County of Lincoln } ss.

I Lester J. Schmit, do hereby certify that on the 9th day of July, 1984, I found evidence of the Northwest corner of Section 33 Township 34, North, Range 7 East, Fourth, Principal Meridian, as described hereon; and that from this evidence I established a new monument and accessories as described hereon to perpetuate the original location of this corner.

Resident witnesses:

.....
.....
.....



○ = Corner monument restored.

History of original corner establishment:

Surveyor:: Jackson L. Prentice

Date:: December 1854

Monumentation:: Wood Post

Witnesses:: 10" aspen, S 39° W, 30 links
10" pine, S 48° E, 17 links
11" pine, N 64° E, 20 links
8" pine, N 45° W, 50 links

Description of corner evidence found: Found a 2" iron pipe, 4" below surface of blacktop, on the centreline of County Trunk Highway "H" for corner. Fence lines run northerly and southerly of the corner from approximate road right-of-way line.

Description of monument and accessories I established to perpetuate the original location of this corner.

30" Berntsen monument set 1/2" below the surface of the blacktop.

Witnesses: 5/8" rebar, S 34° E, 34.82'
1" iron pipe, S 2° W, 23.57'
5/8" rebar, S 49° W, 30.16'
1" iron pipe, N 1° E, 23.63'

Dated at Tomahawk, Wis., this 11th day of August, 1984

Signature Lester J. Schmit Title Land Surveyor Registration No. S-1192
(County Surveyor, Registered Land Surveyor, or other duly authorized official)

Office of Register of Deeds, County of....., I hereby certify that the within instrument was filed in this office for record on the..... day of....., 19..... at..... o'clock..... M..

.....
(Register of Deeds)

By..... Deputy