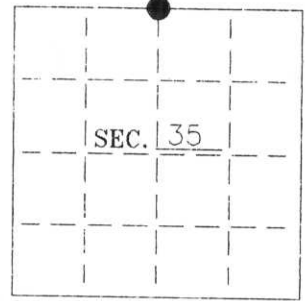


# U. S. PUBLIC LAND SURVEY MONUMENT RECORD

Note: This form is intended and designed to fulfill all requirements of Wisconsin Administrative Code—Chapter A-E 7.08 U. S. Public Land Survey Monument Record (3)(a)(b)(c)(d)(e)(f)(g)(h)(i). An additional sheet may be added if necessary to conform with said requirements.

(a) CORNER LOCATION: State Plane Coordinates  
 North 1/4 corner of Sec. 35 X \_\_\_\_\_  
 Township 34 North Y \_\_\_\_\_  
 Range 07 East Datum Base \_\_\_\_\_  
 Town/City Skanawan County of Lincoln



(b) HISTORY OF ORIGINAL CORNER ESTABLISHMENT:  
 Original Surveyor: Jackson Prentice  
 Date of Survey: Commenced March, 1854  
 Completed March, 1854

Original B.T.'S  
 Birch 10" N41°E 20 lks  
 Red Oak 12" S40°W 30 lks

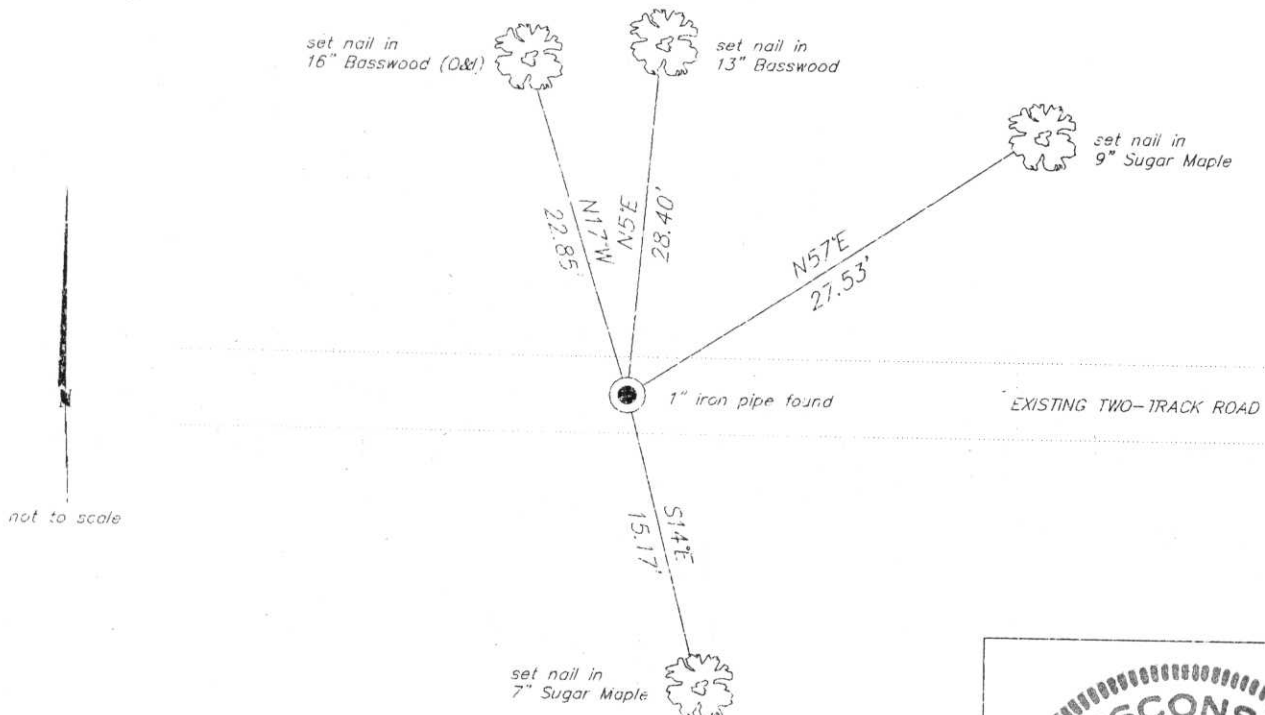
(b)(f)(g)(h) Description of monument found at this corner and if it was accepted—state all evidence (material—testimonial—occupation—plats—records—other monuments) used as a basis for accepting. If not accepted or if nothing was found state evidence used as basis for establishing location. If reestablished through lost corner proportionate methods indicate all monuments—distances and directions used to establish. Indicate type of monument and sign post found or set.

March 6, 1987: Map by W.H. Stuth, Owens-Illinois (O&I), indicates corner is marked by an iron pipe or cap witnessed by a wood post North, 8.6 feet; 12" Basswood N20°W, 22.0 feet; 10" White Birch S4°E, 14.0 feet.

July 12, 1995: I found and accepted a 1" dia. iron pipe witnessed by a 4" sq. wood post N5°E, 8.6 feet. I found and established accessories as shown below.

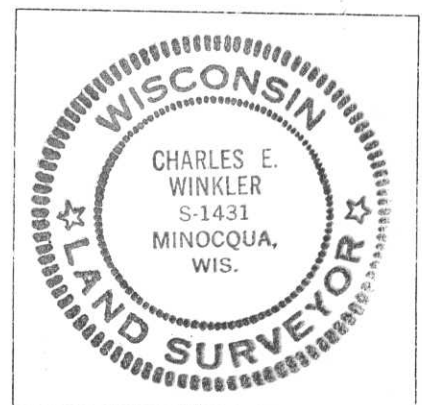
**RECEIVED AT LINCOLN COUNTY  
 COURTHOUSE THIS 13th DAY  
 OF March 19 96  
 Pat Priebe  
 TAX DESCRIPTION OFFICE**

(c)(d)(e) Plan view of corner with ties to at least 4 witness monuments. If in disagreement with previously established corner—show the distances between the two corners and also indicate the ties to the disputed.



(i) I Charles E. Winkler, Registered Land Surveyor S-1431  
 hereby certify that the corner location on this record was determined by me or under my direction and control and that this U.S. Public Land Survey Monument Record is correct and complete to the best of my knowledge and belief.

Charles E. Winkler 3-12-96  
 Signature Foltz and Associates, Inc. Date



INDEX NO. V-19

U-19

# U.S. PUBLIC LAND SURVEY MONUMENT RECORD

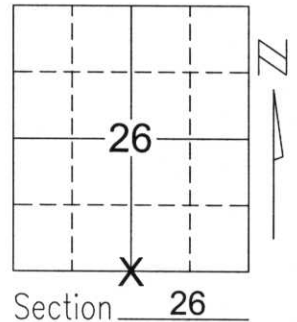
Note: This form is intended and designed to fulfill all requirements of Wisconsin Administrative Code, Chapter A-E 5.02, U.S. Public Land Survey Monument Record (3)(a)(b)(c)(d)(e)(f)(g)(h)(i). An additional sheet may be added if necessary to conform with said requirements.

(a) Corner location: Township 34 North

Range 7 East

Town/City/Village SKANAWAN

County LINCOLN

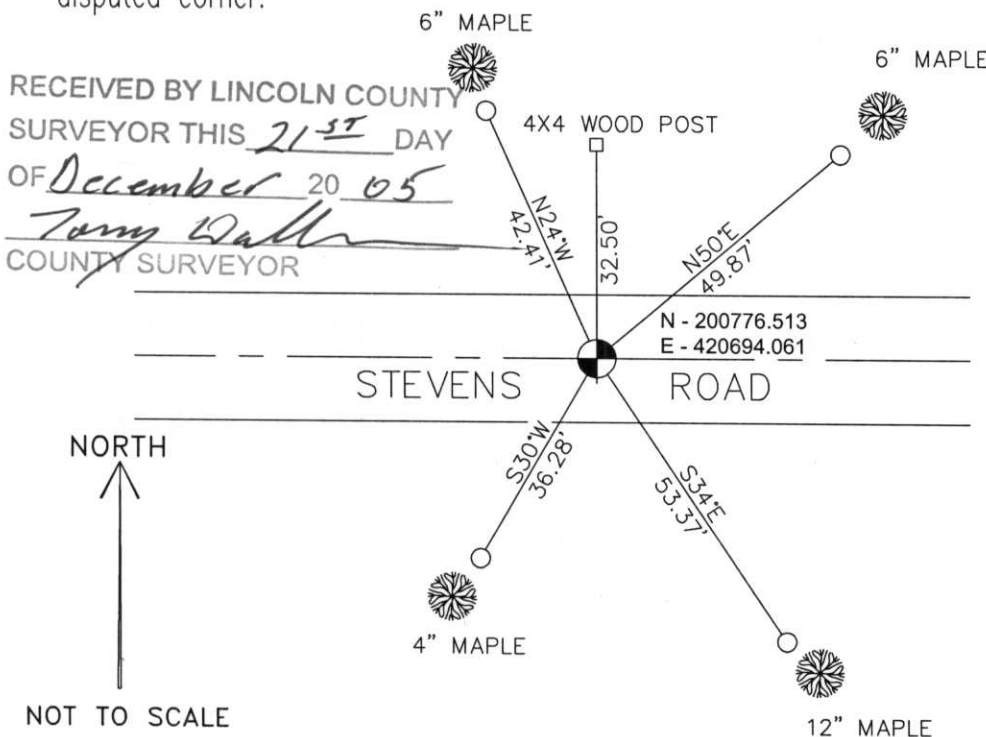


Section 26

(b)(f)(g)(h) Description of monument found at this corner and if it was accepted, state all evidence (material, testimonial, occupational, plats, records, other monuments) used as a basis for accepting. If not accepted or if nothing was found, state evidence used as basis for establishing location. If reestablished through lost corner proportionate methods, indicate all monuments, distances and directions used to establish.

I found no evidence of the corner's original marker or witness trees. I searched for an iron pipe at the corner using existing monument record sheet prepared by Charles E. Winkler, 3-12-96, as described on the sheet. No ties or pipe was found. I found a 4x4 wood post with plaque and a distance of 32.5 feet South to the corner marked on the plaque. I accepted Winkler's corner location and the 4x4 wood post as the best available evidence of the corner's original location and set a Berntsen monument 32.5 feet South of the wood post. I tied the corner as shown below.

(c)(d)(e) Plan view of corner with ties to at least 4 witness monuments. If in disagreement with previously established corner, show the distances between the two corners and also indicate the ties to the disputed corner.



COORDINATES ARE REFERENCED TO THE LINCOLN COUNTY COORDINATE SYSTEM AS DEVELOPED BY THE WISCONSIN DEPARTMENT OF TRANSPORTATION AND ARE BASED ON GPS OBSERVATIONS TO CONTROL POINTS AS SUPPLIED BY LINCOLN COUNTY.

BEARINGS ARE REFERENCED TO MAGNETIC NORTH.

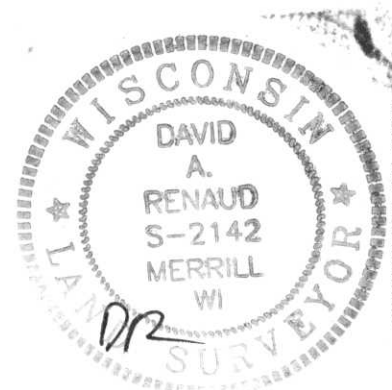
- - SET 3/4" x 30" REBAR W/ ALUM CAP
- - SOUTH QUARTER CORNER BERNTSEN MONUMENT SET

RECEIVED BY LINCOLN COUNTY SURVEYOR THIS 21<sup>ST</sup> DAY OF December 20 05  
*Tony Daller*  
 COUNTY SURVEYOR

NORTH ↑  
 NOT TO SCALE

(i) I, David A. Renaud, RLS S-2142, certify that the corner location on this record was determined by me or under my direction and control and that this U.S. Public Land Survey Monument Record is correct and complete to the best of my knowledge and belief.

David Renaud 12/16/05  
 Signature Date



Index No. 263477

4-19

