

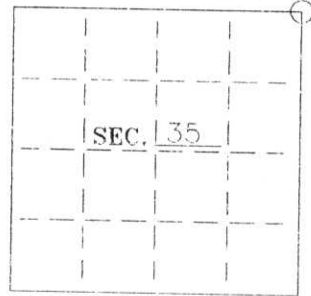
# U. S. PUBLIC LAND SURVEY MONUMENT RECORD

Note: This form is intended and designed to fulfill all requirements of Wisconsin Administrative Code-Chapter A-E 7.08 U. S. Public Land Survey Monument Record (3)(a)(b)(c)(d)(e)(f)(g)(h)(i). An additional sheet may be added if necessary to conform with said requirements.

**(a) CORNER LOCATION:**

Northeast corner of Sec. 35  
 Township 34 North  
 Range 07 East  
 Town/City Skowhan

State Plane Coordinates  
 X ---  
 Y ---  
 Datum Base ---  
 County of Lincoln



**(b) HISTORY OF ORIGINAL CORNER ESTABLISHMENT:**

Original Surveyor: Jackson Prentice  
 Date of Survey: Commenced March, 1854  
 Completed March, 1854

**Original B.T.'S**

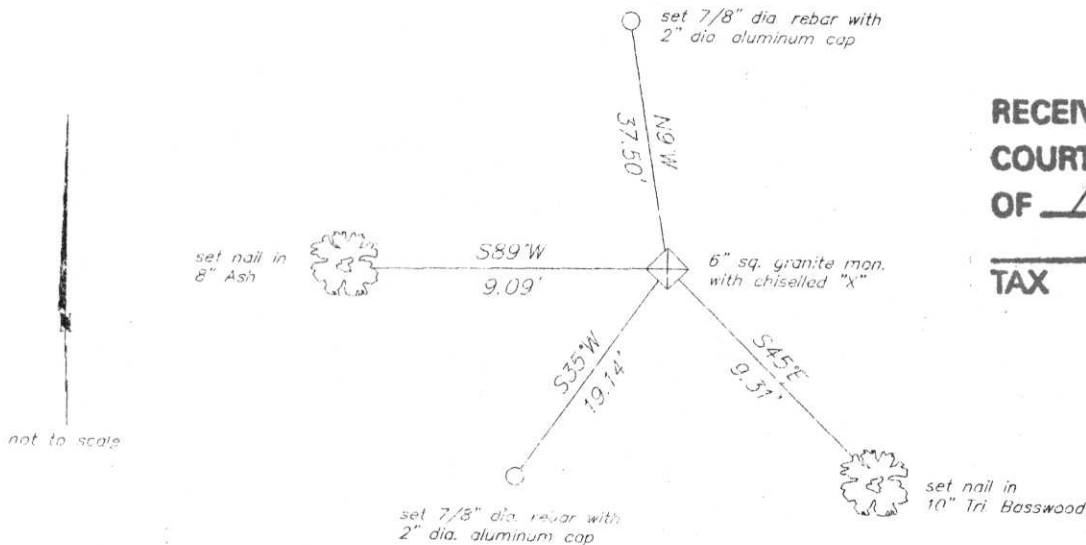
Birch	10"	N35°W	47 lks
Maple	12"	S67°E	50 lks
Elm	16"	S65°W	28 lks
Elm	12"	N65°E	43 lks

(b)(f)(g)(h) Description of monument found at this corner and if it was accepted-state all evidence (material-testimonial-occupation-plats-records-other monuments) used as a basis for accepting. If not accepted or if nothing was found state evidence used as basis for establishing location. If reestablished through lost corner proportionate methods indicate all monuments-distances and directions used to establish. Indicate type of monument and sign post found or set.

1989: Map by William H. Stuth, Nekoosa Papers, Inc. indicates corner is marked by a granite monument.

February 26, 1996: I found and accepted a 6" sq. granite monument. Previous notes by Francis Fox indicate granite monuments have been found and accepted in other parts of this Township. I set a 1" dia., 24" long iron pipe adjacent to the Westernmost corner of the granite monument. I set accessories as shown below and set an orange Carsonite guard post East, 1-1/2 feet.

(c)(d)(e) Plan view of corner with ties to at least 4 witness monuments. If in disagreement with previously established corner-show the distances between the two corners and also indicate the ties to the disputed.



RECEIVED AT LINCOLN COUNTY  
 COURTHOUSE THIS 13th DAY  
 OF March 1996  
*Pet Priebe*  
 TAX DESCRIPTION OFFICE

(i) I Charles E. Winkler, Registered Land Surveyor S-1431  
 hereby certify that the corner location on this record was determined by me or under my direction and control and that this U.S. Public Land Survey Monument Record is correct and complete to the best of my knowledge and belief.

Charles E. Winkler 3-2-1996  
 Signature Foltz & Associates, Inc. Date



INDEX NO. V-21

U-21