

U.S. PUBLIC LAND SURVEY MONUMENT RECORD

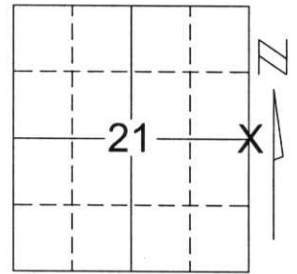
Note: This form is intended and designed to fulfill all requirements of Wisconsin Administrative Code, Chapter A-E 5.02, U.S. Public Land Survey Monument Record (3)(a)(b)(c)(d)(e)(f)(g)(h)(i). An additional sheet may be added if necessary to conform with said requirements.

(a) Corner location: Township 34 North

Range 7 East

Town/City/Village SKANAWAN

County LINCOLN

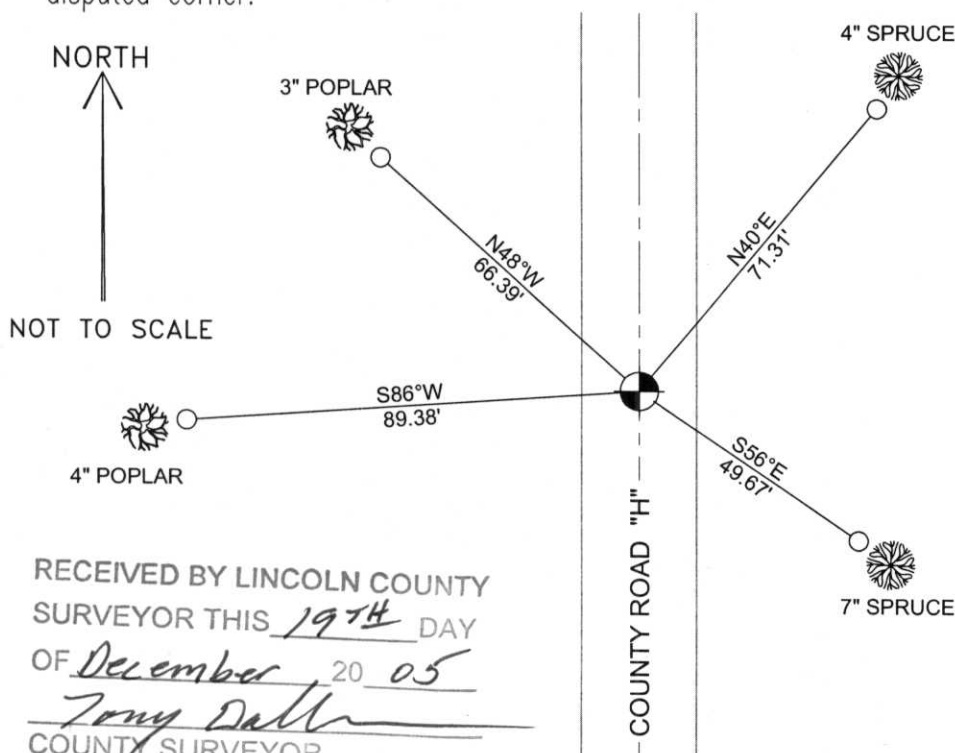


Section 21

(b)(f)(g)(h) Description of monument found at this corner and if it was accepted, state all evidence (material, testimonial, occupational, plats, records, other monuments) used as a basis for accepting. If not accepted or if nothing was found, state evidence used as basis for establishing location. If reestablished through lost corner proportionate methods, indicate all monuments, distances and directions used to establish.

I found no evidence of the original corner marker or witness trees. I accepted the location of the centerline of County Road "H" and existing occupation and fence lines in Sections 21 & 22 as the best available evidence of the corner's original location and determined the position of the corner to best fit all available evidence. I set a Lincoln Co. Berntsen monument and tied the corner as shown below.

(c)(d)(e) Plan view of corner with ties to at least 4 witness monuments. If in disagreement with previously established corner, show the distances between the two corners and also indicate the ties to the disputed corner.



COORDINATES ARE REFERENCED TO THE LINCOLN COUNTY COORDINATE SYSTEM AS DEVELOPED BY THE WISCONSIN DEPARTMENT OF TRANSPORTATION AND WERE DETERMINED BY GPS OBSERVATIONS ON CONTROL POINTS AS SUPPLIED BY LINCOLN COUNTY.

BEARINGS ARE REFERENCED TO MAGNETIC NORTH.

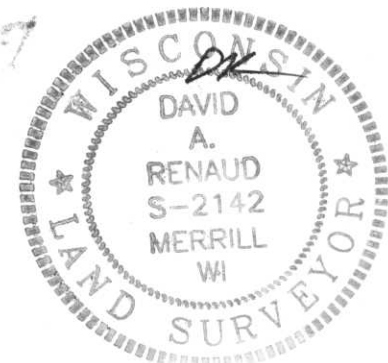
N - 208699.927
E - 40412822.732

- - SET 3/4" x 30" REBAR W/ ALUM CAP
- ⊗ - BERNTSEN MONUMENT SET


RECEIVED BY LINCOLN COUNTY SURVEYOR THIS 19TH DAY OF December 20 05
Tony Dalt
COUNTY SURVEYOR

(i) I, David A. Renaud, RLS S-2142, certify that the corner location on this record was determined by me or under my direction and control and that this U.S. Public Land Survey Monument Record is correct and complete to the best of my knowledge and belief.

David Renaud 12/6/05
Signature Date



Index No. 213475

A photograph of a dark asphalt road surface. A circular metal object, possibly a coin or a small cap, is placed on the road. A white rectangular label with the number '213475' is positioned below the object. The road surface shows some wear and discoloration, particularly along the edges of a yellow-painted line. A large, out-of-focus orange object is visible on the right side of the frame.

213475