

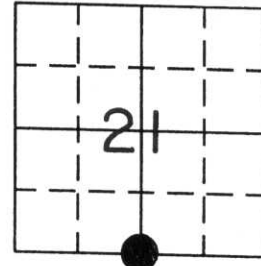
U.S. PUBLIC LAND SURVEY MONUMENT RECORD

Note: This form is intended and designed to fulfill all requirements of Wisconsin Administrative Code, Chapter A-E 7.08, U.S. Public Land Survey Monument Record (3) (a) (b) (c) (d) (e) (f) (g) (h) (i). An additional sheet may be added if necessary to conform with said requirements.

(a) Corner location: Township 34 North
Range 7 East

Town/~~City/Village~~ Skanawan

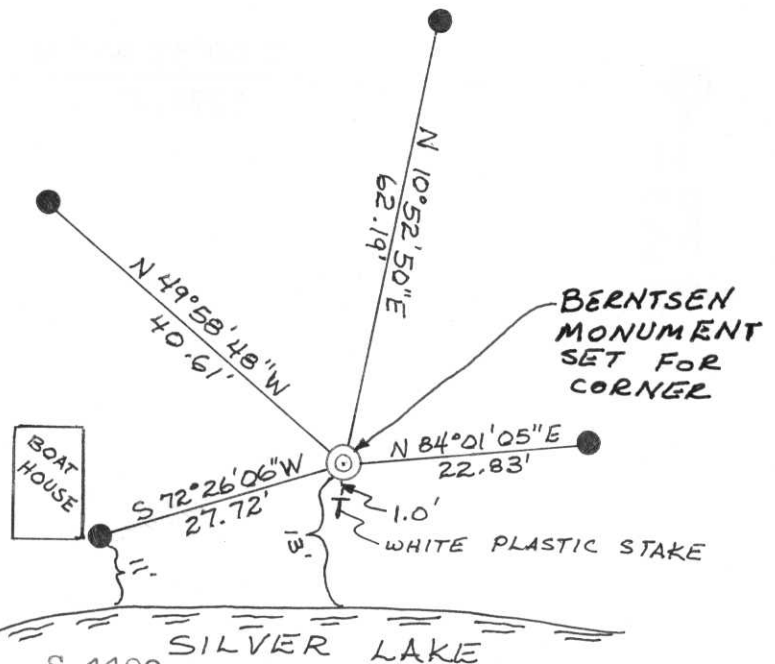
County Lincoln



(b) (f) (g) (h) Description of monument found at this corner and if it was accepted, state all evidence (material, testimonial, occupational, plats, records, other monuments) used as a basis for accepting. If not accepted or if nothing was found, state evidence used as basis for establishing location. If reestablished through lost corner proportionate methods, indicate all monuments, distances and directions used to establish.

Original Gov't. Survey: Dec. 1854 by Jackson Prentice, set wood post for corner with bearings, tamarack 10 N 12° W 25 links and spruce 9 S 86° E 65 links. In the layout of Silver Lake Outing Club Plot, this corner was used for the Southeast corner of Lot 1 of the Plot. I found a 3/4" iron pipe with a 1 1/2" iron pipe placed over the top, for the corner. I set a Berntsen monument to replace the iron pipes, for the corner and witnessed as shown below.

(c) (d) (e) Plan view of corner with ties to at least 4 witness monuments. If in disagreement with previously established corner, show the distance between the two corners and also indicate the ties to the disputed corner.



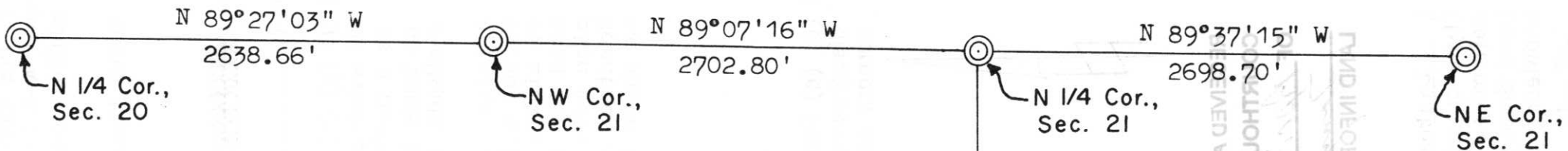
RECEIVED AT LINCOLN COUNTY
COURTHOUSE THIS 19TH DAY
OF April 20 02
Tony Walker
LAND INFORMATION OFFICE

(i) I, Lester J. Schmit R.L.S. S-1192
(type or print name) certify that the corner location on this record was determined by me or under my direction and control and that this U.S. Public Land Survey Monument Record is correct and complete to the best of my knowledge and belief.

Lester J. Schmit
Signature

9 Apr 02
Date

Index No. Q-11



⊙ = Berntsen monument

SCALE 1" = 800'



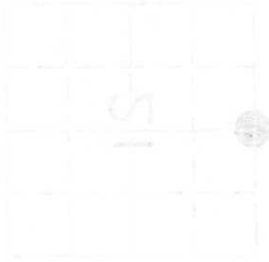
T. 34 N., R. 7 E.

N 00°37'41" W 5274.46'

S 1/4 Cor., Sec. 21

RECEIVED AT LINCOLN COUNTY
 DAY
 50
 LAND INFORMATION OFFICE

PLAT RECORD
 QUARTER MONUMENT RECORD
 RECORD



CORNER
 SECTION
 MONUMENT
 FROM
 EVIDENCE

9 Berntsen