

U.S. PUBLIC LAND SURVEY MONUMENT RECORD

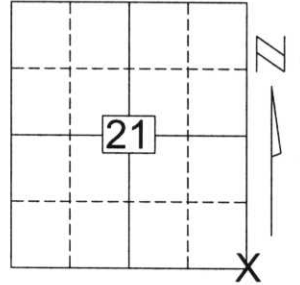
Note: This form is intended and designed to fulfill all requirements of Wisconsin Administrative Code, Chapter A-E 5.02, U.S. Public Land Survey Monument Record (3)(a)(b)(c)(d)(e)(f)(g)(h)(i). An additional sheet may be added if necessary to conform with said requirements.

(a) Corner location: Township 34 North

Range 7 East

Town/City/Village SKANAWAN

County LINCOLN

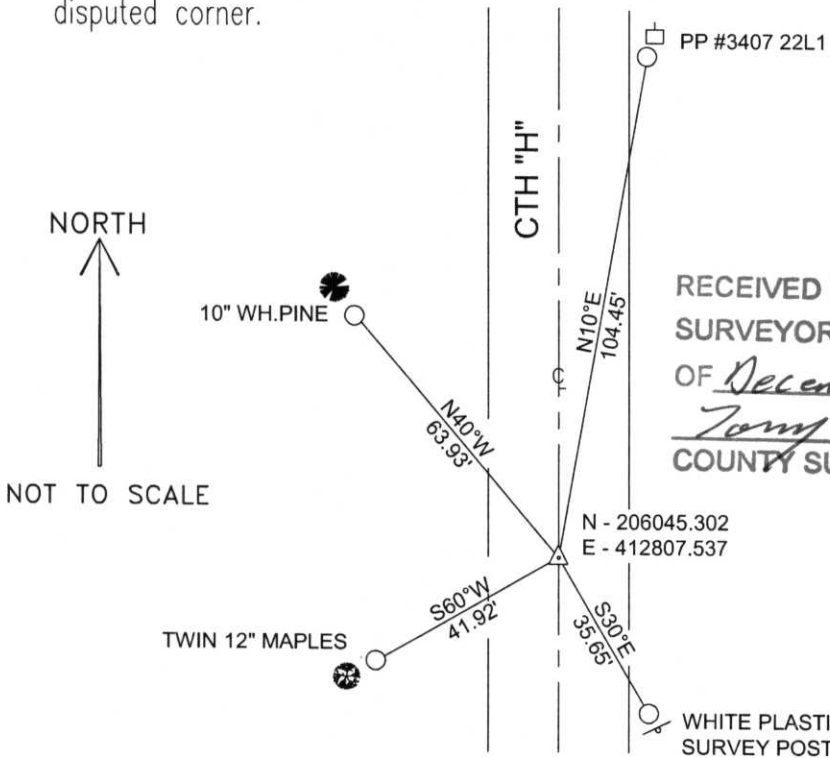


Section 21

(b)(f)(g)(h) Description of monument found at this corner and if it was accepted, state all evidence (material, testimonial, occupational, plats, records, other monuments) used as a basis for accepting. If not accepted or if nothing was found, state evidence used as basis for establishing location. If reestablished through lost corner proportionate methods, indicate all monuments, distances and directions used to establish.

I found no evidence of the corner's original marker or witness tees. I computed a location for the corner from a map filed by John Fisher dated November 1971 on which he shows a found concrete monument at the corner. I found a "Mag Nail" at this spot. I accepted this location as the best available evidence of the corner's original location and tied the "Mag Nail" as shown below.

(c)(d)(e) Plan view of corner with ties to at least 4 witness monuments. If in disagreement with previously established corner, show the distances between the two corners and also indicate the ties to the disputed corner.



COORDINATES ARE REFERENCED TO THE LINCOLN COUNTY COORDINATE SYSTEM AS DEVELOPED BY THE WISCONSIN DEPARTMENT OF TRANSPORTATION AND ARE BASED ON GPS OBSERVATIONS TO CONTROL POINTS AS SUPPLIED BY LINCOLN COUNTY.

RECEIVED BY LINCOLN COUNTY

SURVEYOR THIS 21ST BEARINGS ARE REFERENCED TO MAGNETIC NORTH.

OF December 20 05

David Renaud
COUNTY SURVEYOR

○ - SET 3/4" x 30" REBAR W/ ALUM CAP

△ - NORTHEAST CORNER FOUND MAG NAIL



Index No. 213478

(i) I, David A. Renaud, RLS S-2142, certify that the corner location on this record was determined by me or under my direction and control and that this U.S. Public Land Survey Monument Record is correct and complete to the best of my knowledge and belief.

David Renaud 12/21/05
Signature Date

A photograph of a road surface, likely asphalt, showing a yellow center line. A white crosshair is drawn on the road surface, centered on the yellow line. A hammer with a black handle and a yellow and black head is lying on the road surface, positioned horizontally across the white crosshair. A small, rectangular, light-colored sticky note is placed on the road surface, partially overlapping the hammer handle and the white crosshair. The number "283473" is handwritten on the sticky note in black ink. The road surface is dark gray and shows some wear and tear, including a crack running horizontally across the top of the image.

283473