

# U.S. PUBLIC LAND SURVEY MONUMENT RECORD

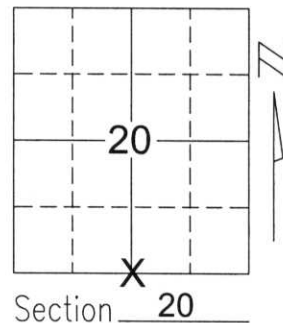
Note: This form is intended and designed to fulfill all requirements of Wisconsin Administrative Code, Chapter A-E 5.02, U.S. Public Land Survey Monument Record (3)(a)(b)(c)(d)(e)(f)(g)(h)(i). An additional sheet may be added if necessary to conform with said requirements.

(a) Corner location: Township 34 North

Range 7 East

Town/City/Village SKANAWAN

County LINCOLN



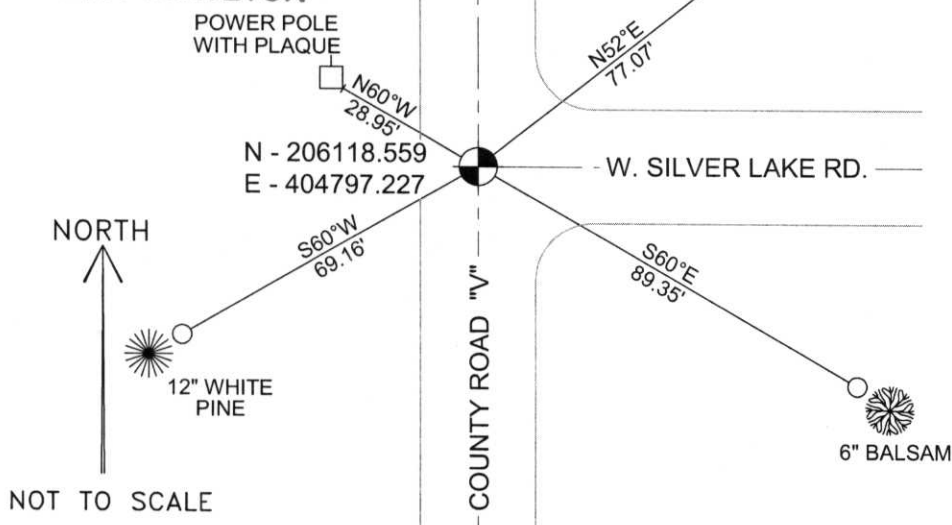
Section 20

(b)(f)(g)(h) Description of monument found at this corner and if it was accepted, state all evidence (material, testimonial, occupational, plats, records, other monuments) used as a basis for accepting. If not accepted or if nothing was found, state evidence used as basis for establishing location. If reestablished through lost corner proportionate methods, indicate all monuments, distances and directions used to establish.

I found no evidence of the corner's original marker or witness trees. I measured the centerlines of County Road V and West Silver Lake Road, and East & West fences ending along the North & South 1/4 line of Section 29. I accepted the centerline intersection of the above roads as the best available evidence of the corner's original location since it fit the fencelines well, and because of a lack of additional evidence, physical, recorded or filed, or otherwise. I set a Lincoln Co, Berntsen monument at the corner 6 inches below the pavement and tied as shown below.

(c)(d)(e) Plan view of corner with ties to at least 4 witness monuments. If in disagreement with previously established corner, show the distances between the two corners and also indicate the ties to the disputed corner.

RECEIVED BY LINCOLN COUNTY  
SURVEYOR THIS 19<sup>TH</sup> DAY  
OF December 20 05  
Tony Dalt  
COUNTY SURVEYOR



COORDINATES ARE REFERENCED TO THE LINCOLN COUNTY COORDINATE SYSTEM AS DEVELOPED BY THE WISCONSIN DEPARTMENT OF TRANSPORTATION AND ARE BASED ON GPS OBSERVATIONS TO CONTROL POINTS AS SUPPLIED BY LINCOLN COUNTY.

BEARINGS ARE REFERENCED TO MAGNETIC NORTH.

○ - SET 3/4" x 30" REBAR W/ ALUM CAP

⊗ - NORTH 1/4 CORNER  
BERTSEN MONUMENT SET  
± 6" BELOW BLACKTOP

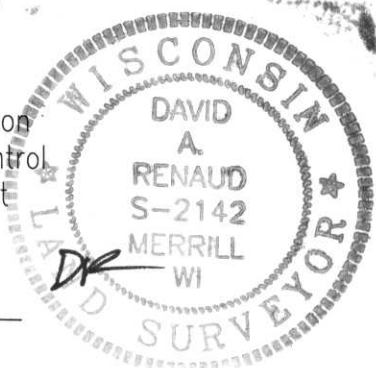
NOT TO SCALE

(i) I, David A. Renaud, RLS S-2142, certify that the corner location on this record was determined by me or under my direction and control and that this U.S. Public Land Survey Monument Record is correct and complete to the best of my knowledge and belief.

David Renaud 12/16/05

Signature

Date



Index No. 203477

9-7



203477