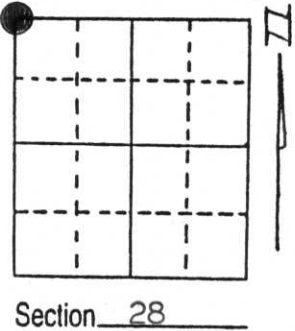


U.S. PUBLIC LAND SURVEY MONUMENT RECORD

Note: This form is intended and designed to fulfill all requirements of Wisconsin Administrative Code, Chapter A-E 5.02, U.S. Public Land Survey Monument Record (3) (a) (b) (c) (d) (e) (f) (g) (h) (i). An additional sheet may be added if necessary to conform with said requirements.

(a) Corner location: Township 34 North
 Range 7 East/West

Town/City/Village Skanawam
 County Lincoln

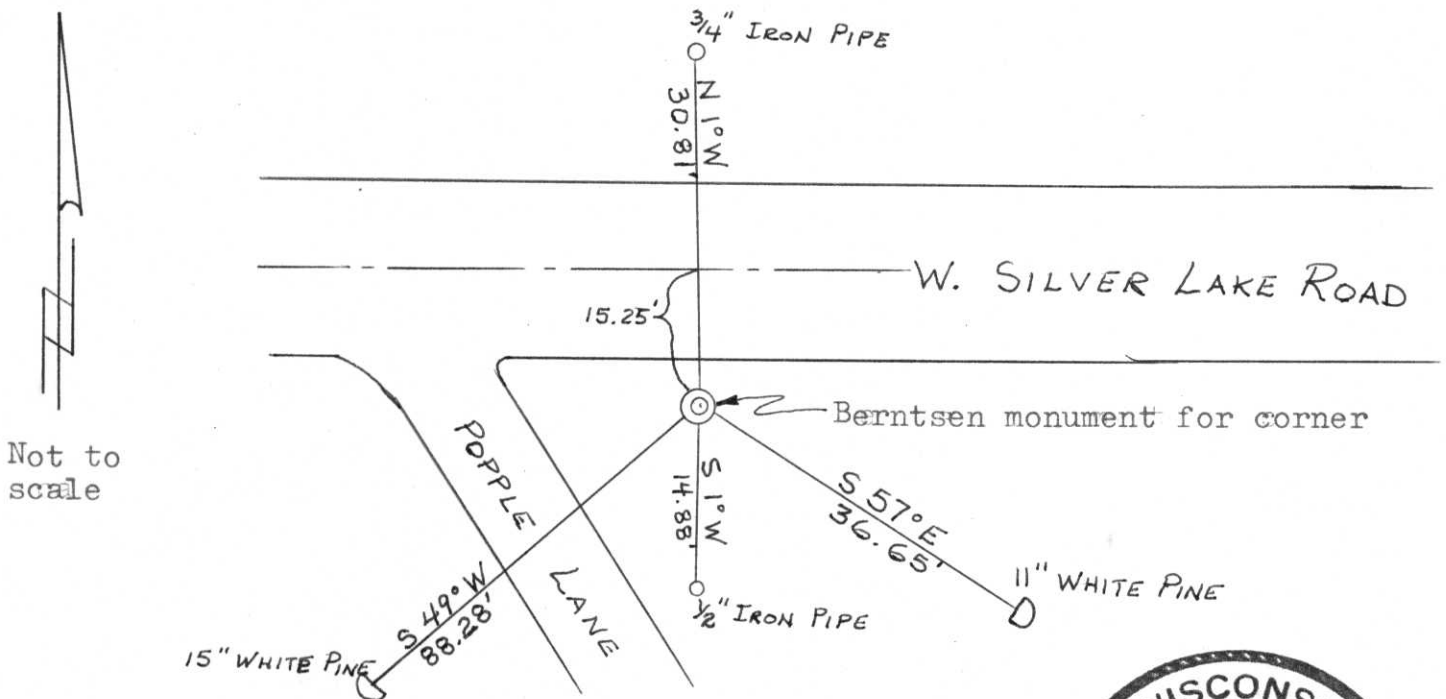


(b) (f) (g) (h) Description of monument found at this corner and if it was accepted, state all evidence (material, testimonial, occupational, plats, records, other monuments) used as a basis for accepting. If not accepted or if nothing was found, state evidence used as basis for establishing location. If reestablished through lost corner proportionate methods, indicate all monuments, distances and directions used to establish.

Original Gov't. Survey: Dec. 1854 by Jackson Prentice, set wood post for corner with bearings, pine 10 S 19° E 150 links, birch 8 S 25° W 72 links & birch 8 N 8° W 130 links. I found a 1" iron rod for the corner, witnessed by the iron pipe and white pine per survey by John H. Fisher in November 1971. I replaced the 1" iron rod with a Berntsen monument for the corner and referenced as shown below.

RECEIVED OCT 9 1991

(c) (d) (e) Plan view of corner with ties to at least 4 witness monuments. If in disagreement with previously established corner, show the distances between the two corners and also indicate the ties to the disputed corner.



Not to scale

(i) I, Lester J. Schmit R.L.S. S-1192

(type or print name) certify that the corner location on this record was determined by me or under my direction and control and that this U.S. Public Land Survey Monument Record is correct and complete to the best of my knowledge and belief.

Lester J. Schmit Signature 29 Sep 91 Date



Index No. Q-9