

Attachment to Tie Sheet M,N-5, T34N, R7E

43407193700

I visited the corner on 6/01/2018 to verify the corner and reference tie monumentation. I found the Berntsen monument and all 4 ties from David Renaud tie sheet (12/15/2005). Ties appear to be measured as slope distances, I measured horizontal distances follows:

Northerly tie, 15.60' (16.75'); Northeasterly tie, 14.34' (14.56'); Southeasterly tie, 11.47' (12.05'); Westerly tie, 32.67' (32.80').

NOTE

- Coordinates on Tie Sheet check well.

 6/08/18

Anthony R. Dallman, PLS-2405

Lincoln County Surveyor



U.S. PUBLIC LAND SURVEY MONUMENT RECORD

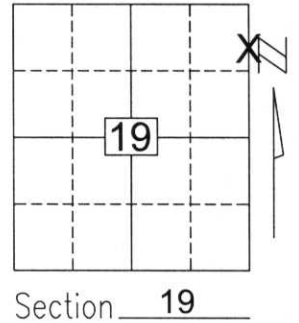
Note: This form is intended and designed to fulfill all requirements of Wisconsin Administrative Code, Chapter A-E 5.02, U.S. Public Land Survey Monument Record (3)(a)(b)(c)(d)(e)(f)(g)(h)(i). An additional sheet may be added if necessary to conform with said requirements.

(a) Corner location: Township 34 North

Range 7 East

Town/City/Village SKANAWAN

County LINCOLN

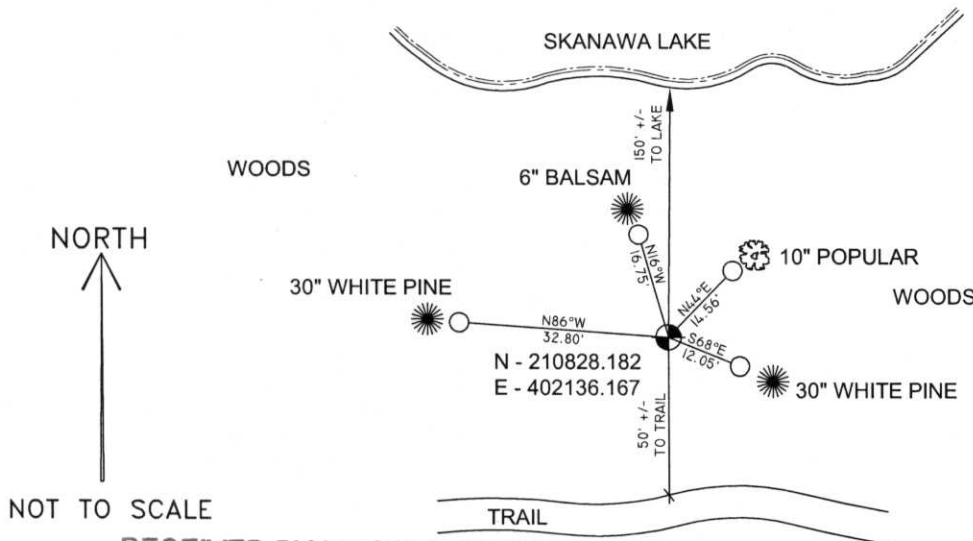


Section 19

(b)(f)(g)(h) Description of monument found at this corner and if it was accepted, state all evidence (material, testimonial, occupational, plats, records, other monuments) used as a basis for accepting. If not accepted or if nothing was found, state evidence used as basis for establishing location. If reestablished through lost corner proportionate methods, indicate all monuments, distances and directions used to establish.

The corner between Sections 17, 18, 19 & 20 falls in a dammed lake. No original monument was set at this spot. I held a found iron pipe on the line between Sections 17 & 18 north of Skanawan Lake and ran a line from the corner between Sections 8, 9, 17 & 18 through this pipe then South until it intersected a line between the 1/4 corner to Sections 18 & 19 and the 1/4 corner to Section 17 & 20 and accepted this spot as the best available evidence for the corner between Sections 17, 18, 19 & 20. I then set the meander corner on the South side of Skanawan Lake on a line between this corner in Skanawan Lake and the 1/4 corner to Sections 19 & 20. I tied the corner as shown below.

(c)(d)(e) Plan view of corner with ties to at least 4 witness monuments. If in disagreement with previously established corner, show the distances between the two corners and also indicate the ties to the disputed corner.



COORDINATES ARE REFERENCED TO THE LINCOLN COUNTY COORDINATE SYSTEM AS DEVELOPED BY THE WISCONSIN DEPARTMENT OF TRANSPORTATION AND ARE BASED ON GPS OBSERVATIONS TO CONTROL POINTS AS SUPPLIED BY LINCOLN COUNTY.

BEARINGS ARE REFERENCED TO MAGNETIC NORTH.

○ - SET 3/4" x 30" REBAR W/ ALUM CAP

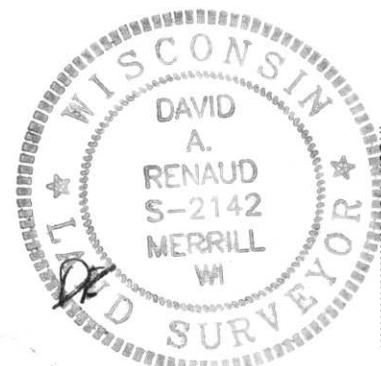
⊙ - BERNTSEN MONUMENT

NOT TO SCALE

RECEIVED BY LINCOLN COUNTY SURVEYOR THIS 19TH DAY OF December, 20 05
Tracy Dahl
 COUNTY SURVEYOR

(i) I, David A. Renaud, RLS S-2142, certify that the corner location on this record was determined by me or under my direction and control and that this U.S. Public Land Survey Monument Record is correct and complete to the best of my knowledge and belief.

David Renaud Signature 12/15/05 Date



Index No. 1934715

MN-5



1934715