

# U.S. PUBLIC LAND SURVEY MONUMENT RECORD

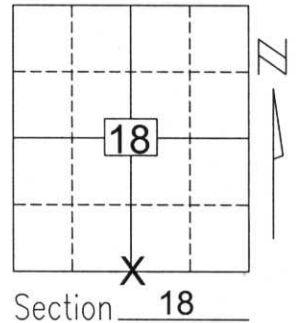
Note: This form is intended and designed to fulfill all requirements of Wisconsin Administrative Code, Chapter A-E 5.02, U.S. Public Land Survey Monument Record (3)(a)(b)(c)(d)(e)(f)(g)(h)(i). An additional sheet may be added if necessary to conform with said requirements.

(a) Corner location: Township 34 North

Range 7 East

Town/City/Village SKANAWAN

County LINCOLN

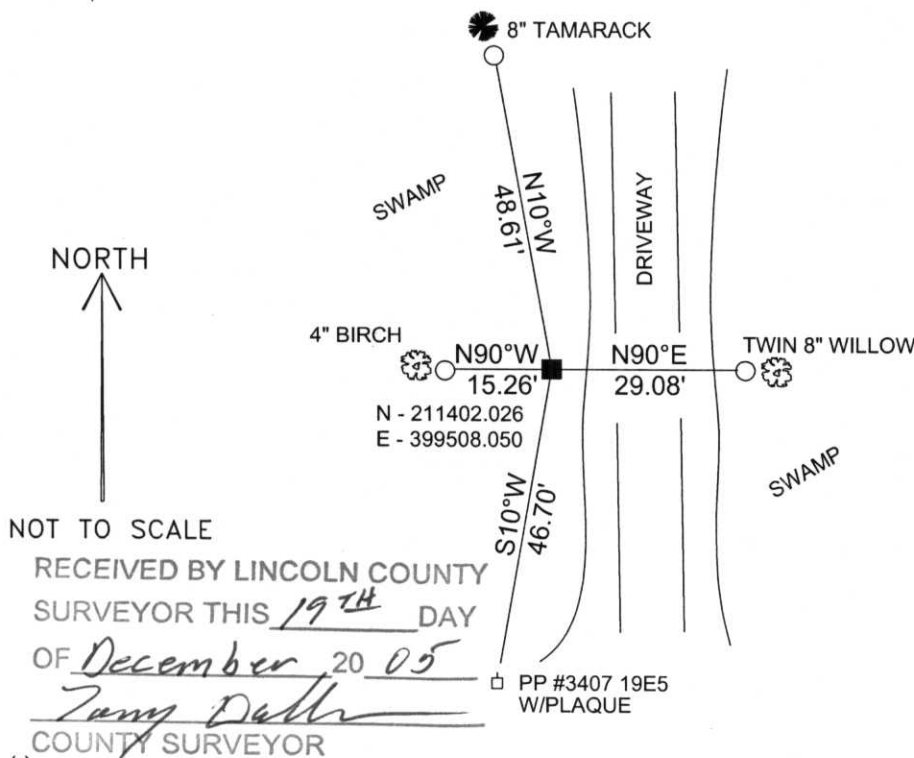


Section 18

(b)(f)(g)(h) Description of monument found at this corner and if it was accepted, state all evidence (material, testimonial, occupational, plats, records, other monuments) used as a basis for accepting. If not accepted or if nothing was found, state evidence used as basis for establishing location. If reestablished through lost corner proportionate methods, indicate all monuments, distances and directions used to establish.

I found no evidence of the corner's original marker or witness trees. I found a 6-in. x 6-in. square concrete monument at the corner. This monument appears on maps on record at the Lincoln County Surveyor's Office. The location also fit well with occupation in Sections 18 & 19 and original measurement of this section line. I accepted the monument as the best available evidence of the corner's original location. I tied the monument as shown below.

(c)(d)(e) Plan view of corner with ties to at least 4 witness monuments. If in disagreement with previously established corner, show the distances between the two corners and also indicate the ties to the disputed corner.



COORDINATES ARE REFERENCED TO THE LINCOLN COUNTY COORDINATE SYSTEM AS DEVELOPED BY THE WISCONSIN DEPARTMENT OF TRANSPORTATION AND ARE BASED ON GPS OBSERVATIONS TO CONTROL POINTS AS SUPPLIED BY LINCOLN COUNTY.

BEARINGS ARE REFERENCED TO MAGNETIC NORTH.

- - SET 3/4" x 30" REBAR W/ ALUM CAP
- - FOUND 4X4 CONCRETE MONUMENT

NOT TO SCALE

RECEIVED BY LINCOLN COUNTY SURVEYOR THIS 19<sup>TH</sup> DAY OF December 20 05  
*Jany Deller*  
 COUNTY SURVEYOR

(i) I, David A. Renaud, RLS S-2142, certify that the corner location on this record was determined by me or under my direction and control and that this U.S. Public Land Survey Monument Record is correct and complete to the best of my knowledge and belief.

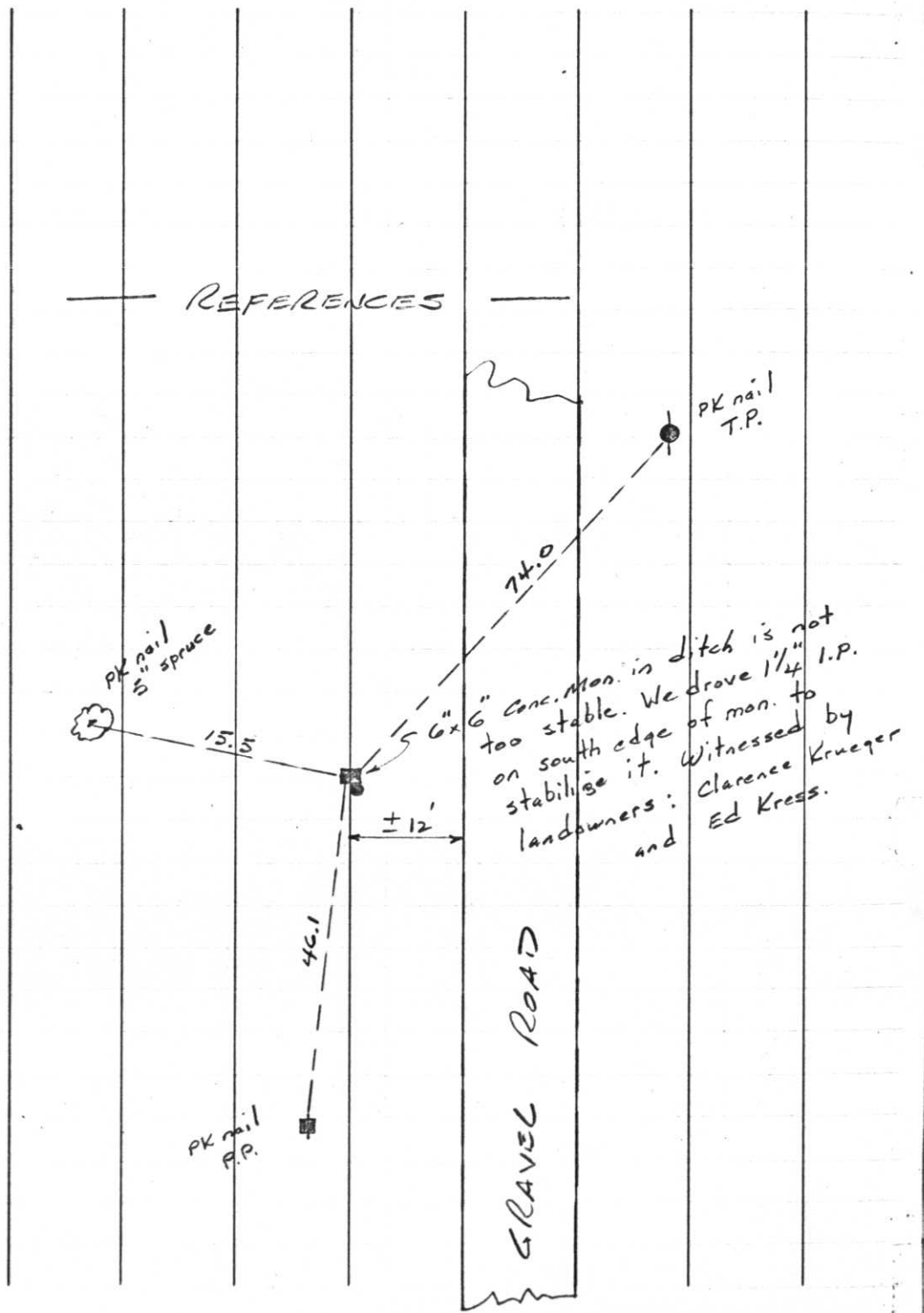
David Renaud 12/15/05  
 Signature Date



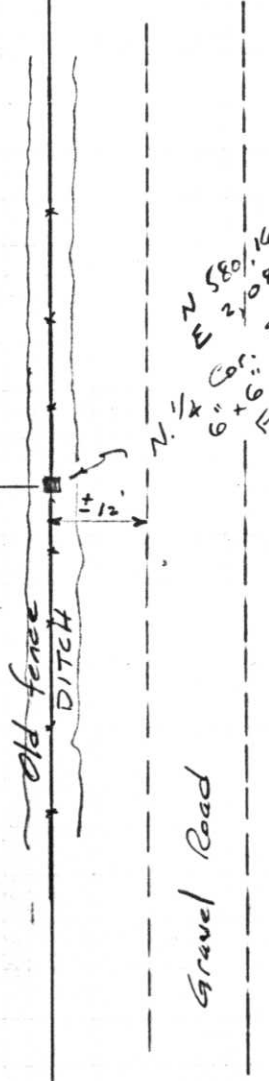
T34N

R7E

Oct. 7, 1971

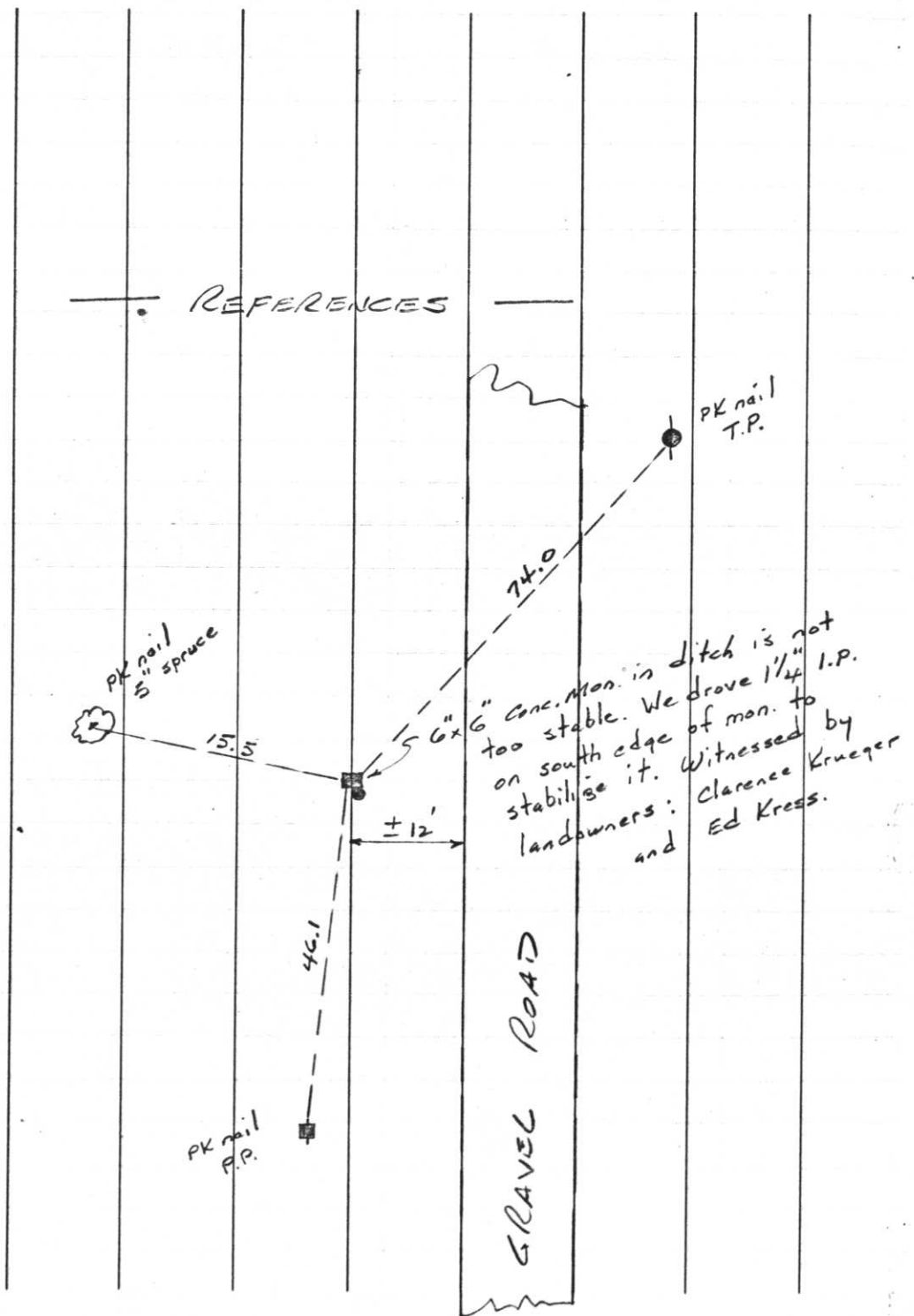


old fence

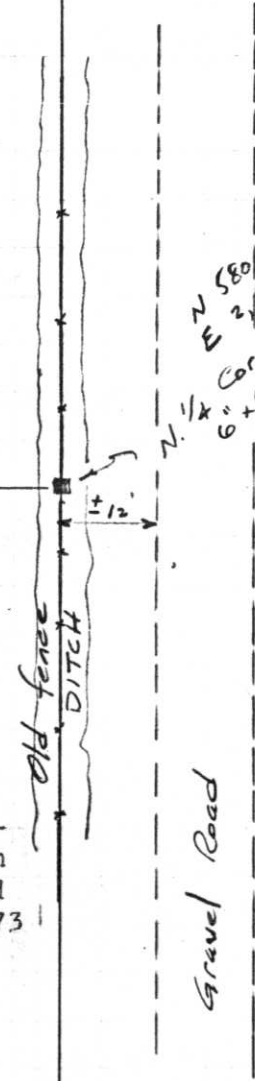


N 580, 161.66  
 E 2, 087, 019.02  
 Cor. Sec. 19-34-7E  
 6" x 6" Conc. Mon.  
 Found by Munningshoff; Scherer  
 10/7/71

156.



old fence



T 34 N

R 7 E

M-3

81.

Oct. 7, 1971

N 58° 16' 06"  
 E 21087.019.02  
 Cor. Sec. 19-34-7E  
 6" x 6" Conc. Mon.  
 Found by Munninghoff & Scherer  
 10/7/71

Project I.D. 1173-3-00 C.T.H."S"-  
 U.S.H.8 U.S.H. 51 Freeway Lincoln  
 Co. Wm. Scherer Surveyor Received  
 from Division of Hwy's Jan. 11, 1973

SM  
UA  
RR  
VK  
EE  
YR

183477

