

Attachment to Tie Sheet M-5,6, T34N, R7E

43407170038

I visited the corner on 6/01/2018 to verify the corner and reference tie monumentation. I found the Berntsen monument and all 4 ties from David Renaud tie sheet (12/21/2005). Ties appear to be measured as slope distances, I measured horizontal distances follows:

Northerly tie, 19.77' (20.59'); Easterly tie, 31.28' (31.87'); Southeasterly tie, 13.49' (13.67'); Westerly tie, 9.80' (10.01').

NOTE

- Coordinates on Tie Sheet check well.

Anthony R. Dallman 6/08/18

Anthony R. Dallman, PLS-2405

Lincoln County Surveyor



U.S. PUBLIC LAND SURVEY MONUMENT RECORD

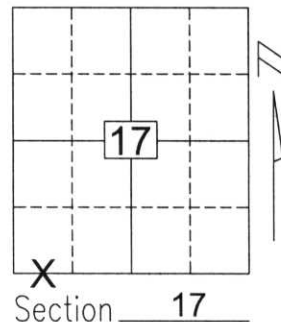
Note: This form is intended and designed to fulfill all requirements of Wisconsin Administrative Code, Chapter A-E 5.02, U.S. Public Land Survey Monument Record (3)(a)(b)(c)(d)(e)(f)(g)(h)(i). An additional sheet may be added if necessary to conform with said requirements.

(a) Corner location: Township 34 North

Range 7 East

Town/City/Village SKANAWAN

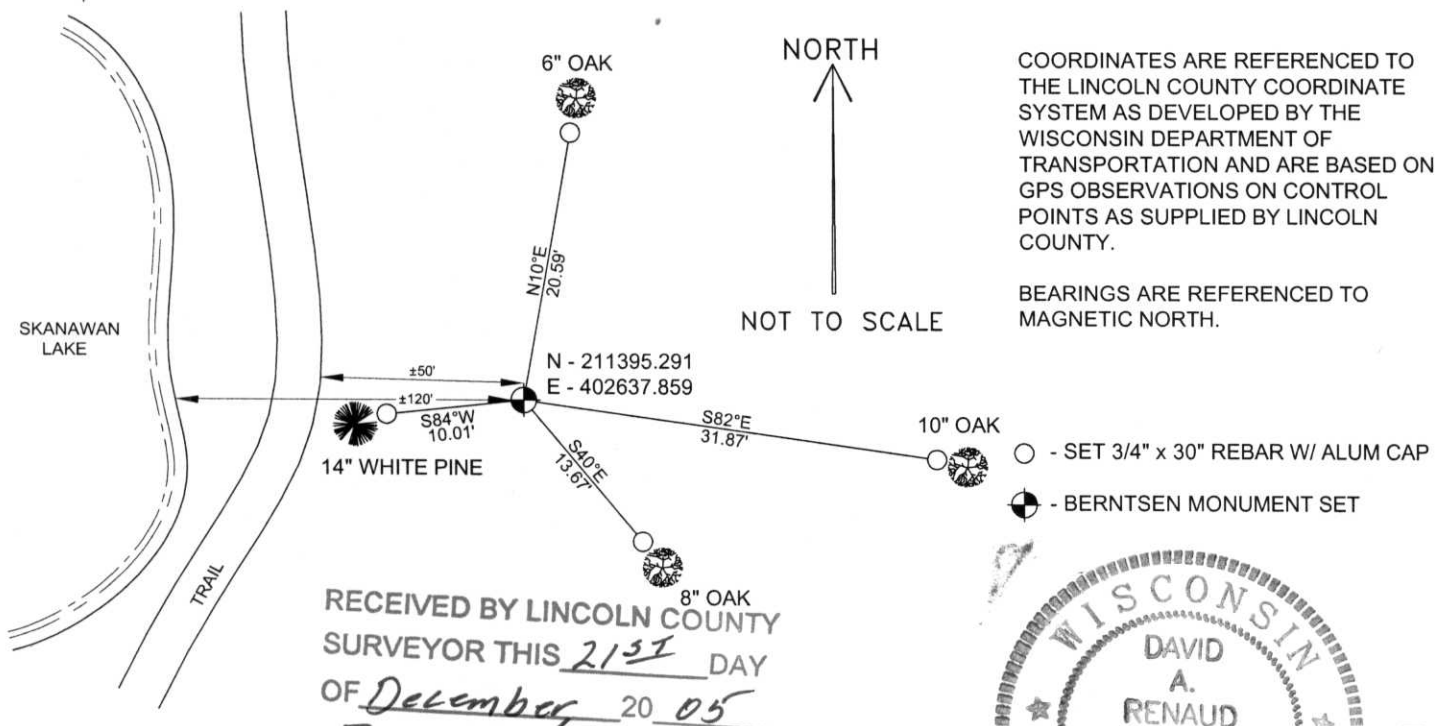
County LINCOLN



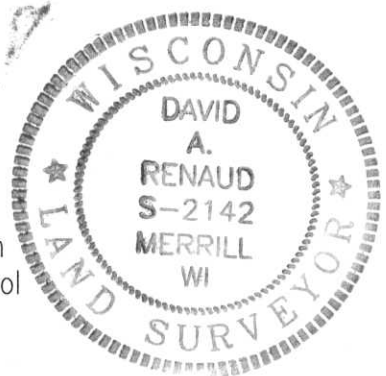
(b)(f)(g)(h) Description of monument found at this corner and if it was accepted, state all evidence (material, testimonial, occupational, plats, records, other monuments) used as a basis for accepting. If not accepted or if nothing was found, state evidence used as basis for establishing location. If reestablished through lost corner proportionate methods, indicate all monuments, distances and directions used to establish.

The corner to Sections 17, 18, 19 & 20 falls in a dammed lake - there was no original monumentation set for this meander corner. I set the 1/4 corner between Sections 17 & 18 and the 1/4 corner between Sections 18 & 19 as part of this survey as described on the Monument Record sheet filed by me for those corners. I measured to the 1/4 corner between Sections 17 & 20 and the 1/4 corner between Sections 19 & 20. I accepted the locations of these four 1/4 corners to be the best available evidence of the corner's original location and calculated the location of the corner to Sections 17, 18, 19 & 20 to be at the intersection of lines between these four 1/4 corners. I set a Lincoln Co. Berntsen monument on the line between the 1/4 corner between Sections 17 & 20, and the corner between Sections 17, 18 19 & 20 East of the East shore of Skanawan Lake and tied as shown below.

(c)(d)(e) Plan view of corner with ties to at least 4 witness monuments. If in disagreement with previously established corner, show the distances between the two corners and also indicate the ties to the disputed corner.



RECEIVED BY LINCOLN COUNTY SURVEYOR THIS 21ST DAY OF December 20 05
Zony Della
 CRISNS-2142 SURVEYOR



(i) I, David A. Renaud, CRISNS-2142, certify that the corner location on this record was determined by me or under my direction and control and that this U.S. Public Land Survey Monument Record is correct and complete to the best of my knowledge and belief.

David Renaud 12/21/05
 Signature Date

Index No. 1734721

M-5,6



1734721