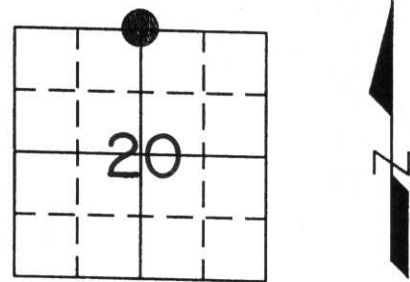


# U.S. PUBLIC LAND SURVEY MONUMENT RECORD

Note: This form is intended and designed to fulfill all requirements of Wisconsin Administrative Code, Chapter A-E 7.08, U.S. Public Land Survey Monument Record (3) (a) (b) (c) (d) (e) (f) (g) (h) (i). An additional sheet may be added if necessary to conform with said requirements.

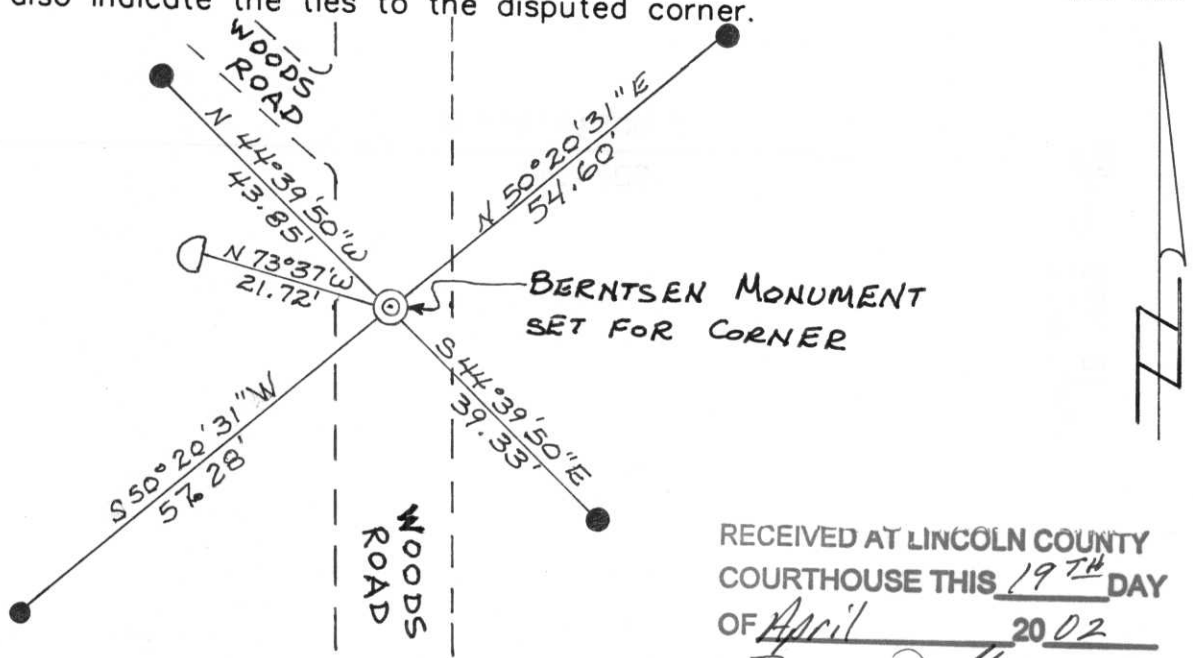
(a) Corner location: Township 34 North  
 Range 7 East  
 Town/City/Village Skawanaw  
 County Lincoln



(b) (f) (g) (h) Description of monument found at this corner and if it was accepted, state all evidence (material, testimonial, occupational, plats, records, other monuments) used as a basis for accepting. If not accepted or if nothing was found, state evidence used as basis for establishing location. If reestablished through lost corner proportionate methods, indicate all monuments, distances and directions used to establish.

Original Gov't. Survey: Dec. 1854 by Jackson Prentice, set wood post for corner with bearings, pine 10 N 14° E 11 links and pine 10 S 36° E 42 links. I found a 1 3/4" o.d. x 40" iron pipe for the corner, in the centre of a woods road, 5' south of a cable gate across the road. A 15" red oak BT, very old with face grown over, helped in corner verification. Set white plastic location stake, 10.75' west of corner on the side of the road. I replaced the iron pipe with a Berntsen monument for the corner and witnessed as shown below.

(c) (d) (e) Plan view of corner with ties to at least 4 witness monuments. If in disagreement with previously established corner, show the distance between the two corners and also indicate the ties to the disputed corner.



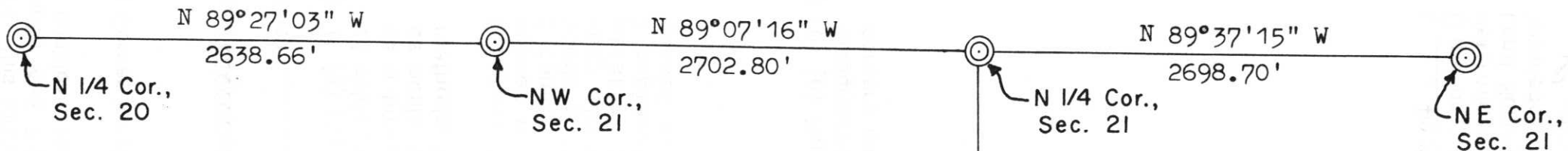
RECEIVED AT LINCOLN COUNTY  
 COURTHOUSE THIS 19<sup>TH</sup> DAY  
 OF April 20 02  
*Tony Walker*  
 LAND INFORMATION OFFICE

(i) I, Lester J. Schmit R.L.S. S-1192  
 (type or print name) certify that the corner location on this record was determined by me or under my direction and control and that this U.S. Public Land Survey Monument Record is correct and complete to the best of my knowledge and belief.

*Lester J. Schmit*  
 Signature

9 Apr 02  
 Date

Index No. M-7



⊙ = Berntsen monument

SCALE 1" = 800'



T. 34 N., R. 7 E.

N 00°37'41" W

5274.46'

S 1/4 Cor.,  
Sec. 21

LAND INFORMATION OFFICE  
OF THE  
COURTHOUSE THIS DAY  
RECEIVED AT LINCOLN COUNTY

*Handwritten notes:*  
Date  
D. J. Jones