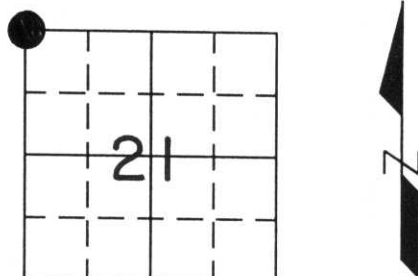


# U.S. PUBLIC LAND SURVEY MONUMENT RECORD

Note: This form is intended and designed to fulfill all requirements of Wisconsin Administrative Code, Chapter A-E 7.08, U.S. Public Land Survey Monument Record (3) (a) (b) (c) (d) (e) (f) (g) (h) (i). An additional sheet may be added if necessary to conform with said requirements.

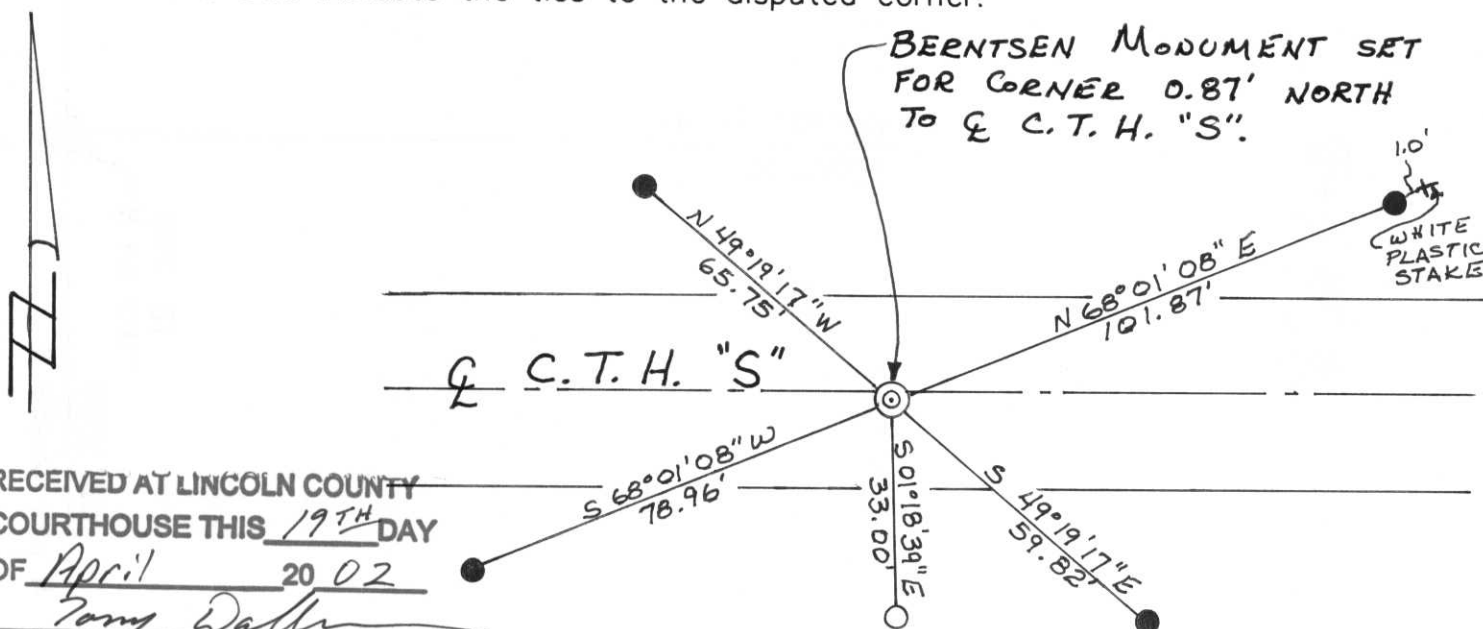
(a) Corner location: Township 34 North  
 Range 7 East  
 Town/~~City/Village~~ Skawanaw  
 County Lincoln



(b) (f) (g) (h) Description of monument found at this corner and if it was accepted, state all evidence (material, testimonial, occupational, plats, records, other monuments) used as a basis for accepting. If not accepted or if nothing was found, state evidence used as basis for establishing location. If reestablished through lost corner proportionate methods, indicate all monuments, distances and directions used to establish.

Original Gov't. Survey: Dec. 1854 by Jackson Prentice, set wood post for corner with bearings, pine 12 S 32° E 21 links, pine 13 S 46° W 15 links, pine 14 N 20° W 30 links and birch 8 N 48° E 40 links. No evidence of corner or bearings were found. Using a life time resident, Mark Wydeven's testimony that an old fence line northerly of a large borrow pit and 1 1/4" iron pipe S 01°18'39" E 33.00' established the corner location. I set a Berntsen at said location and witnessed as shown below.

(c) (d) (e) Plan view of corner with ties to at least 4 witness monuments. If in disagreement with previously established corner, show the distance between the two corners and also indicate the ties to the disputed corner.



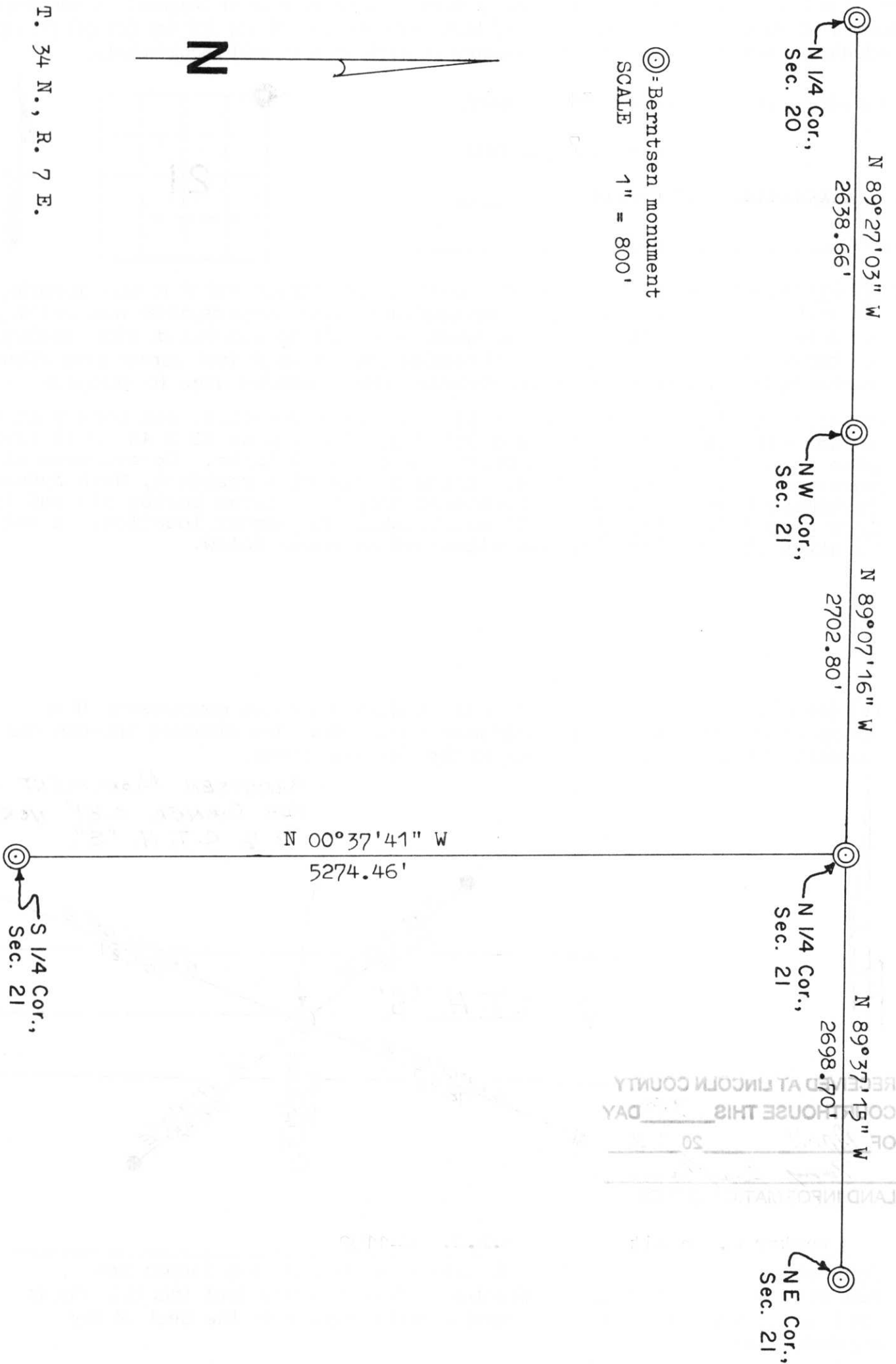
RECEIVED AT LINCOLN COUNTY  
 COURTHOUSE THIS 19<sup>TH</sup> DAY  
 OF April 20 02  
Tony Daller  
 LAND INFORMATION OFFICE

(i) I, Lester J. Schmit R.L.S. S-1192  
 (type or print name) certify that the corner location on this record was determined by me or under my direction and control and that this U.S. Public Land Survey Monument Record is correct and complete to the best of my knowledge and belief.

Lester J. Schmit  
 Signature

9 Apr 02  
 Date

Index No. M-9



RECEIVED AT LINCOLN COUNTY  
 CO. HOUSE THIS \_\_\_\_\_ DAY  
 OF \_\_\_\_\_ 19\_\_\_\_  
 LAND INFORMATION

# U.S. PUBLIC LAND SURVEY MONUMENT RECORD

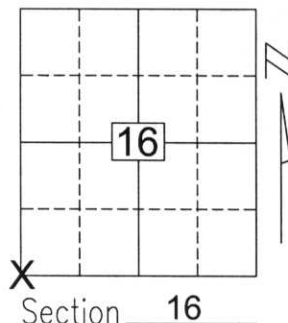
Note: This form is intended and designed to fulfill all requirements of Wisconsin Administrative Code, Chapter A-E 5.02, U.S. Public Land Survey Monument Record (3)(a)(b)(c)(d)(e)(f)(g)(h)(i). An additional sheet may be added if necessary to conform with said requirements.

(a) Corner location: Township 34 North

Range 7 East

Town/City/Village SKANAWAN

County LINCOLN

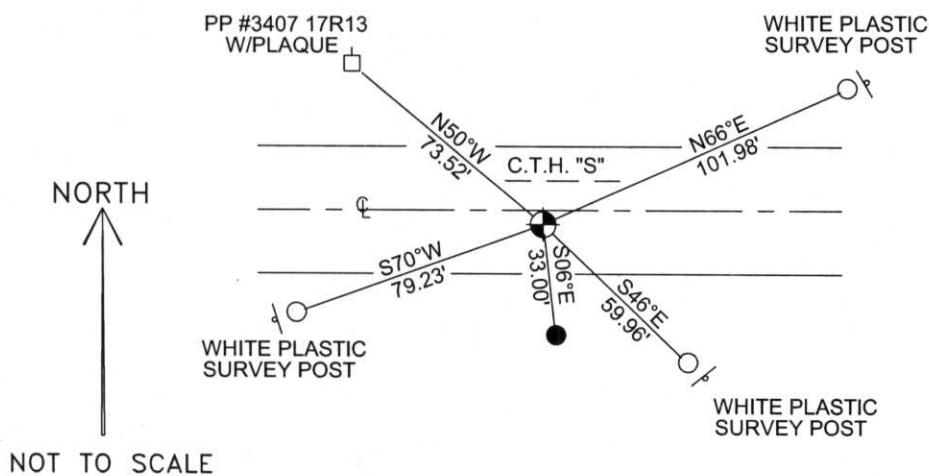


Section 16

(b)(f)(g)(h) Description of monument found at this corner and if it was accepted, state all evidence (material, testimonial, occupational, plats, records, other monuments) used as a basis for accepting. If not accepted or if nothing was found, state evidence used as basis for establishing location. If reestablished through lost corner proportionate methods, indicate all monuments, distances and directions used to establish.

I found no evidence of the original corner marker or witness trees. Lester Schmit set a Berntsen monument at the corner as described on his Monument Record sheet of April 02. I found the Berntsen set by Schmit and accepted where he had set the monument as the best available evidence of the corner's original location. I tied the corner as shown below.

(c)(d)(e) Plan view of corner with ties to at least 4 witness monuments. If in disagreement with previously established corner, show the distances between the two corners and also indicate the ties to the disputed corner.



COORDINATES ARE REFERENCED TO THE LINCOLN COUNTY COORDINATE SYSTEM AS DEVELOPED BY THE WISCONSIN DEPARTMENT OF TRANSPORTATION AND ARE BASED ON GPS OBSERVATIONS TO CONTROL POINTS AS SUPPLIED BY LINCOLN COUNTY.

BEARINGS ARE REFERENCED TO MAGNETIC NORTH.

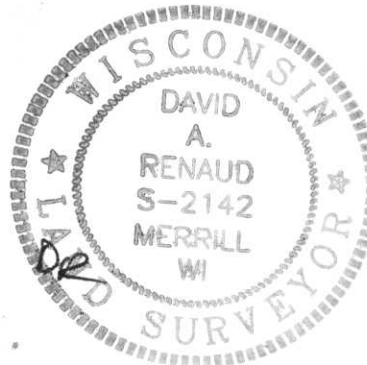
N - 211370.562  
E - 407411.449

- - 1 1/4" IRON PIPE FOUND
- - FOUND 3/4" x 30" REBAR W/ ALUM CAP
- ⊕ - BERNTSEN MONUMENT

RECEIVED BY LINCOLN COUNTY SURVEYOR THIS 19<sup>TH</sup> DAY OF December 20 05  
Zany Duth  
COUNTY SURVEYOR


(i) I, David A. Renaud, RLS S-2142, certify that the corner location on this record was determined by me or under my direction and control and that this U.S. Public Land Survey Monument Record is correct and complete to the best of my knowledge and belief.

David Renaud 12/15/05  
Signature Date



Index No. 163476

M-9

A photograph of a road surface, likely asphalt, showing a yellow painted stripe. In the center, there is a circular mark or depression in the pavement. A white rectangular tag with the number 163476 is placed on the road surface in the foreground.

163476