

U.S. PUBLIC LAND SURVEY MONUMENT RECORD

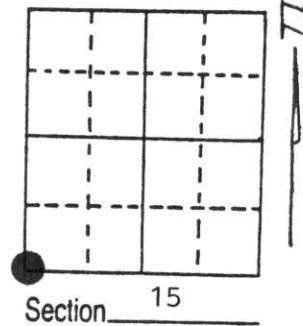
Note: This form is intended and designed to fulfill all requirements of Wisconsin Administrative Code, Chapter A-E 5.02, U.S. Public Land Survey Monument Record (3) (a) (b) (c) (d) (e) (f) (g) (h) (i). An additional sheet may be added if necessary to conform with said requirements.

(a) Corner location: Township 34 North

Range 7 East

Town/City/Village TN. of SKANAWAN

County LINCOLN



(b) (f) (g) (h) Description of monument found at this corner and if it was accepted, state all evidence (material, testimonial, occupational, plats, records, other monuments) used as a basis for accepting. If not accepted or if nothing was found, state evidence used as basis for establishing location. If reestablished through lost corner proportionate methods, indicate all monuments, distances and directions used to establish.

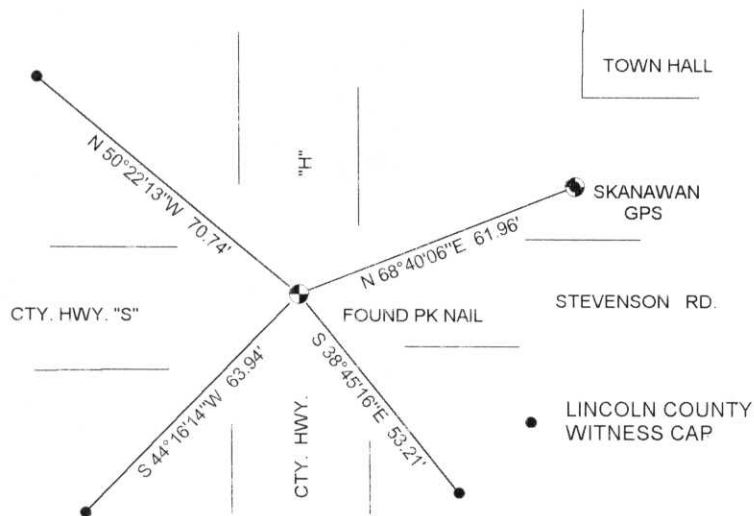
DEC. 1854 JACKSON PRENTICE SET A WOOD POST

OCTOBER 1985 LESTER SCHMIT RE-ESTABLISHED THE CORNER POSITION C/L C/L "H"&"S"

JUNE 1997 I FOUND A PK NAIL AT THE C/L INTERSECTION OF HWYS. "H&"S"

(c) (d) (e) Plan view of corner with ties to at least 4 witness monuments. If in disagreement with previously established corner, show the distances between the two corners and also indicate the ties to the disputed corner.

RECEIVED AT LINCOLN COUNTY COURTHOUSE THIS 10th DAY OF June 1997 Patrick J. Lemke TAX DESCRIPTION OFFICE



DAVID L. LEMKE S-1845

(i) I, _____ (type or print name) certify that the corner location on this record was determined by me or under my direction and control and that this U.S. Public Land Survey Monument Record is correct and complete to the best of my knowledge and belief.

Signature

JUN. 09 1997

Date

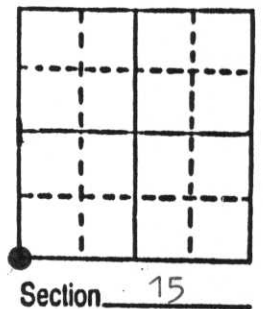


Index No. M-13

U.S. PUBLIC LAND SURVEY MONUMENT RECORD

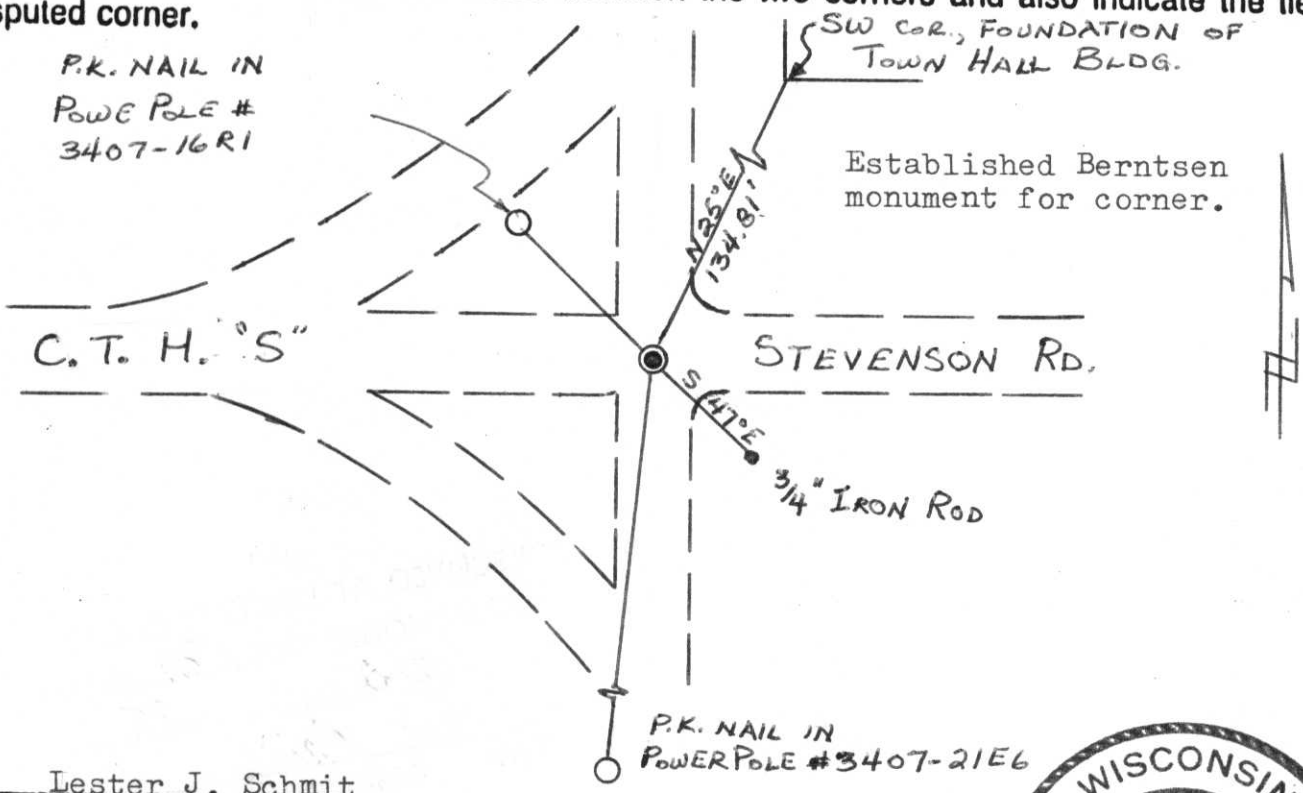
Note: This form is intended and designed to fulfill all requirements of Wisconsin Administrative Code, Chapter A-E 5.02, U.S. Public Land Survey Monument Record (3) (a) (b) (c) (d) (e) (f) (g) (h) (i). An additional sheet may be added if necessary to conform with said requirements.

(a) Corner location: Township 34 North
 Range 7 East
 Town Skawanaw
 County Lincoln



b) (f) (g) (h) Description of monument found at this corner and if it was accepted, state all evidence (material, testimonial, occupational, plats, records, other monuments) used as a basis for accepting. If not accepted or if nothing was found, state evidence used as basis for establishing location. If reestablished through lost corner proportionate methods, indicate all monuments, distances and directions used to establish. Original Gov't. Survey: Dec. 1854 by Jackson Prentice, set wood post for corner with bearings, pine 23 S 29° W 83 links, pine 20 N 32° W 150 links, pine 8 N 35° E 125 links & pine 20 S 56° E no distance given. I found no monument for the corner location. After talking with County Highway construction personnel on location at the time of the reconstruction of County Trunk Highway "H", I have determined that no corner monument existed at that time. I therefore have established the corner location at the intersection of the centreline of County Trunk Highway "H" from the north & south and an easterly extension of the centreline of County Trunk Highway "S". On 10 May 1913 by George W. Smith, surveyor, a survey of a highway commenced at this corner and went to the north.

c) (d) (e) Plan view of corner with ties to at least 4 witness monuments. If in disagreement with previously established corner, show the distances between the two corners and also indicate the ties to the disputed corner.



(i) I, Lester J. Schmit
 (type or print name) certify that the corner location on this record was determined by me or under my direction and control and that this U.S. Public Land Survey Monument Record is correct and complete to the best of my knowledge and belief.

Lester J. Schmit 14 Oct 85
 Signature Date



Index No. M-13