

U.S. PUBLIC LAND SURVEY MONUMENT RECORD

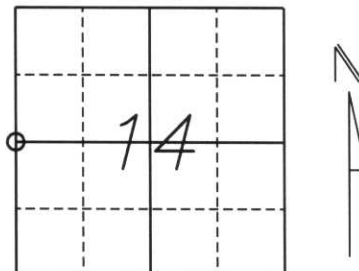
Note: This form is intended and designed to fulfill all requirements of Wisconsin Administrative Code, Chapter A-E 5.02, U.S. Public Land Survey Monument Record (3) (a) (b) (c) (d) (e) (f) (g) (h) (l). An additional sheet may be added if necessary to conform with said requirements.

(a) Corner location: Township 34 North

Range 7 East

Town/City/Village SKANAWAN

County LINCOLN



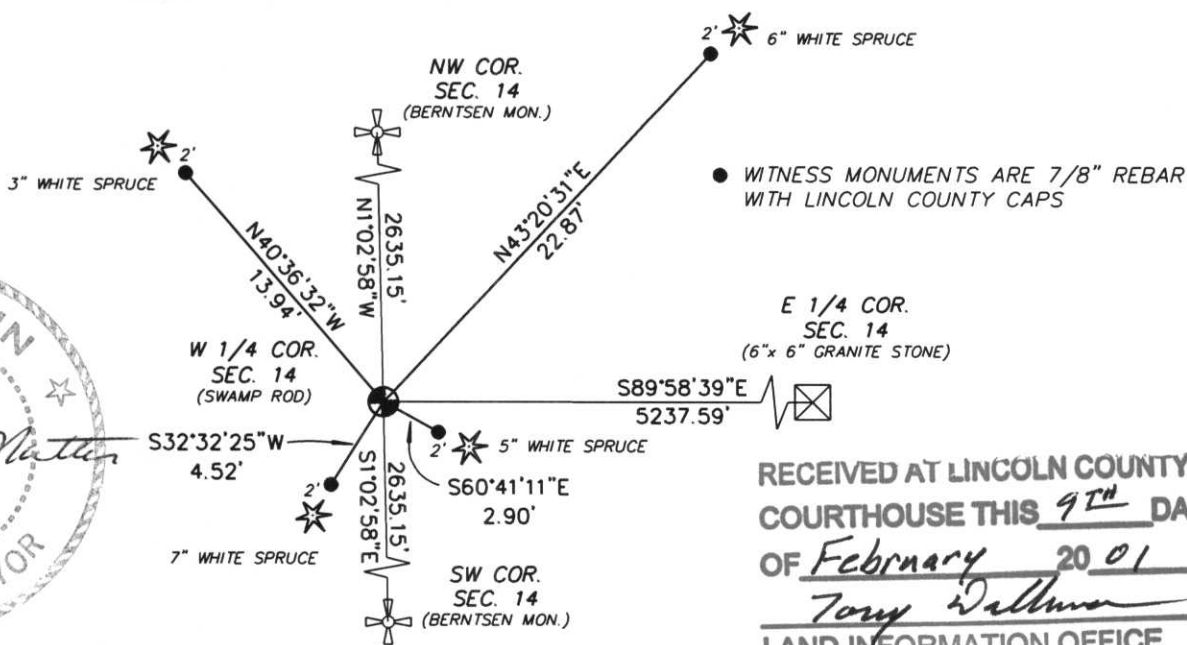
Section 14

(b) (f) (g) (h) Description of monument found at this corner and if it was accepted, state all evidence (material, testimonial, occupational, plats, records, other monuments) used as a basis for accepting. If not accepted or if nothing was found, state evidence used as a basis for establishing location. If reestablished through lost corner proportionate methods, indicate all monuments, distances and directions used to establish.

*Original survey done by Jass L. Nowlin in 1865. Set cedar post with bearing trees:
9" Tamarak S78°E 40 links
10" Tamarak N3°W 28 links*

Found no evidence of corner in existing swamp. Set 1"x 48" swamp rod at the midpoint between the Northwest Section corner and the Southwest Section corner. Set (4) 7/8" rebars as witness monuments with Lincoln County caps approx. 2 feet from bearing trees.

(c) (d) (e) Plan view of corner with ties to at least 4 witness monuments. If in disagreement with previously established corner, show the distances between the two corners and also indicate the ties to the disputed corner.



**RECEIVED AT LINCOLN COUNTY
COURTHOUSE THIS 9TH DAY
OF February 20 01
Tony Dallman
LAND INFORMATION OFFICE**

(l) I, William W. Nutter RLS, S-2299

(type or print name) certify that the corner location on this record was determined by me or under my direction and control and that this U.S. Public Land Survey Monument Record is correct and complete to the best of my knowledge and belief.

William W. Nutter, RLS S-2299

Signature

2-9-01

Date

Index No.

K-17