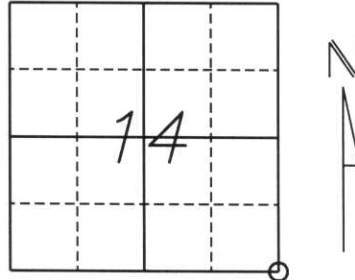


U.S. PUBLIC LAND SURVEY MONUMENT RECORD

Note: This form is intended and designed to fulfill all requirements of Wisconsin Administrative Code, Chapter A-E 5.02, U.S. Public Land Survey Monument Record (3) (a) (b) (c) (d) (e) (f) (g) (h) (i). An additional sheet may be added if necessary to conform with said requirements.

(a) Corner location: Township 34 North
 Range 7 East
 Town/City/Village Skawanaw
 County Lincoln



Section 14

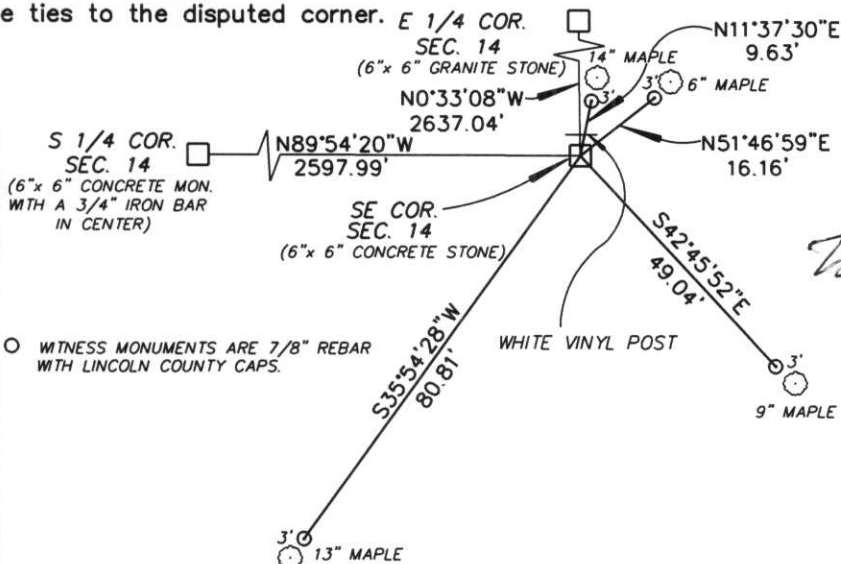
(b) (f) (g) (h) Description of monument found at this corner and if it was accepted, state all evidence (material, testimonial, occupational, plats, records, other monuments) used as a basis for accepting. If not accepted or if nothing was found, state evidence used as a basis for establishing location. If reestablished through lost corner proportionate methods, indicate all monuments, distances and directions used to establish.

Original survey done by Jass L. Nowlin in 1865. Set cedar corner post with bearing trees:

10" Aspen	N56°W	24 links
9" Birch	N44°E	56 links
9" Birch	S42°E	20 links
? " Aspen	S28°W	25 links

Found a 6"x 6" concrete monument set by unknown next to an old fence post and a maple tree to the North with a Lincoln County plaque. Set (4) rebar with Lincoln County caps approx. 3 feet from the bearing trees as witness monuments.

(c) (d) (e) Plan view of corner with ties to at least 4 witness monuments. If in disagreement with previously established corner, show the distances between the two corners and also indicate the ties to the disputed corner.



RECEIVED AT LINCOLN COUNTY
 COURTHOUSE THIS 9TH DAY
February 20 01
 LAND INFORMATION OFFICE

(i) I, William W. Nutter RLS, S-2299
 (type or print name) certify that the corner location on this record was determined by me or under my direction and control and that this U.S. Public Land Survey Monument Record is correct and complete to the best of my knowledge and belief.

William W. Nutter RLS, S-2299 2-09-01
 Signature Date

Index No. M-21