

# U S PUBLIC LAND SURVEY MONUMENT RECORD

NOTE: This form is intended and designed to fulfill all requirements of Wisconsin Administrative Code, Chapter A-E 7.08 U.S. Public Land Survey Monument Record (3) (a-i)

A-E 7.08(3)(a) Identity of corner:  
 EAST 1/4 CORNER SECTION 13,  
 TOWNSHIP 34 NORTH,  
 RANGE 07 EAST OF THE 4TH PM,  
 TOWN OF SKANAWAN,  
 COUNTY OF LINCOLN

WISCORS - LINCOLN COUNTY  
 N: 213,933.392 USft (213,933.360)  
 E: 428,528.742 USft (428,528.675)  
 Datum: NAD83 (2011)  
 GNSS Method RTN - Direct  
 GNSS Control WISCORS VRS



The coordinate value shown has been verified by the average of two or more GPS observations at a markedly different time. Coordinates shown in parenthesis are provided by Lincoln County.

A-E 7.08(3)(b)

Original Surveyor: James M. Marsh

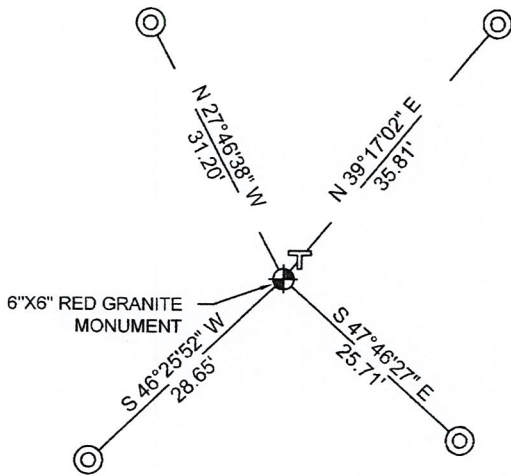
Date of Original Survey	Commenced:	August 12, 1851	Original Accessories:		
	Completed:	August 18, 1851	Sugar	12	S 30° E 78 Links
			Birch	8	S 36° W 48 Links
			Birch	8	N 88° W 41 Links
			Birch	10	N 41° E 42 Links

1937 - Surveyor - Francis Fuchs (aka Francis Fox) set granite stones for monuments in this area.

September 15, 2022 - While performing the 2022 Lincoln County PLSS Corner Remonumentation and GPS Services project, I found a 6" X6" red granite stone near the computed position provided by Lincoln County. The monument extends ±12" above the ground. I established 4 new reference monuments as shown below.

A-E 7.08(3)(c)(d) Plan view of corner with references to at least 4 witness monuments.

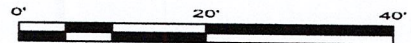
BEARINGS LISTED TO THE NEAREST SECOND ARE REFERENCED TO WISCONSIN COUNTY COORDINATE REFERENCE SYSTEM - LINCOLN COUNTY ZONE. ALL OTHER BEARINGS ARE MAGNETIC



RECEIVED BY LINCOLN COUNTY SURVEYOR THIS 27<sup>TH</sup> DAY OF December 20 22  
*Tom Dale*  
 COUNTY SURVEYOR

## LEGEND

- 6" x 6" red granite monument, found
- 7/8" diameter X 30" long - iron rod with 2" diameter aluminum cap, set
- Vinyl T-post, found ±1.5 feet NE of corner



A-E 7.08(3)(e) 1851 Surveyor set a post, 1937 Surveyor set a granite stone. I found a 6" x 6" red granite stone.

A-E 7.08(3)(f) I accept this monument as a FOUND PERPETUATED LOCATION of the corner.

A-E 7.08(3)(g)(h) This corner was not determined through lost-corner-proportionate methods.

A-E 7.08(3)(i) I, Jeffrey L. DeMuth, Professional Land Surveyor No. S-2656, hereby certify that the corner location on this record was determined by the Lincoln County Surveyor, and the monuments found or set as shown hereon were measured by me or under my direction and control, and that this U.S. Public Land Survey Monument Record is correct and complete to the best of my knowledge, and belief.



SIGNATURE

*Jeffrey L. DeMuth*

December 14, 2022

DATE

K-25

## REPORT

### 2022-Lincoln County PLSS Corner Remonumentation and GPS Services

Wisconsin Corner Point Identification Number: 43407132000

Surveyor: Jeffrey L. DeMuth – S2656

Corner monument: Found 6" x 6" red granite stone.

Field Book: Cardinal North – Lincoln Co. Remon. – 2022-00

Page: 46

Horizontal Datum: WisCRS – Lincoln County Zone – NAD83(2011)

Date / time of initial measurement:

September 15, 2022 - Start 16:12:11 CDT – End 16:25:20 CDT

September 19, 2022 - Start 15:26:55 CDT – End 15:43:59 CDT

Reference monuments:

4 – Set - 7/8" diameter X 30" long iron rods with 2" diameter Lincoln Co. aluminum cap.

#### Coordinate Table

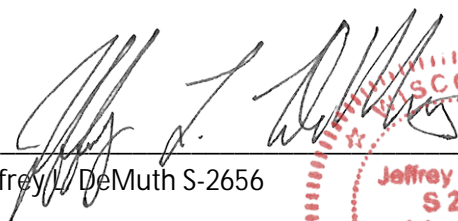
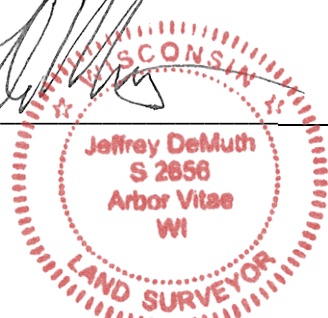
	County Provided	2022 Measurement	Difference
North	213933.360	213933.392	-0.03
East	428528.675	428528.742	-0.07

Observed coordinates match with existing coordinates within reason.

Request Data Log for more information.

Additional Notes:

Corner is beneath a wind fallen  $\pm 18$ " diameter poplar tree, therefore it was measured on 2 separate dates. Corner extends  $\pm 1$  foot above grade.

  
 Jeffrey L. DeMuth S-2656
 
 October 7, 2022  
 Date



43407132000\_Mon-N





43407132000\_North





43407132000\_West





43407132000\_South





43407132000\_East

