

U.S. PUBLIC LAND SURVEY MONUMENT RECORD

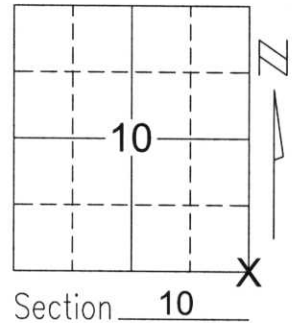
Note: This form is intended and designed to fulfill all requirements of Wisconsin Administrative Code, Chapter A-E 5.02, U.S. Public Land Survey Monument Record (3)(a)(b)(c)(d)(e)(f)(g)(h)(i). An additional sheet may be added if necessary to conform with said requirements.

(a) Corner location: Township 34 North

Range 7 East

Town/City/Village SKANAWAN

County LINCOLN



(b)(f)(g)(h) Description of monument found at this corner and if it was accepted, state all evidence (material, testimonial, occupational, plats, records, other monuments) used as a basis for accepting. If not accepted or if nothing was found, state evidence used as basis for establishing location. If reestablished through lost corner proportionate methods, indicate all monuments, distances and directions used to establish.

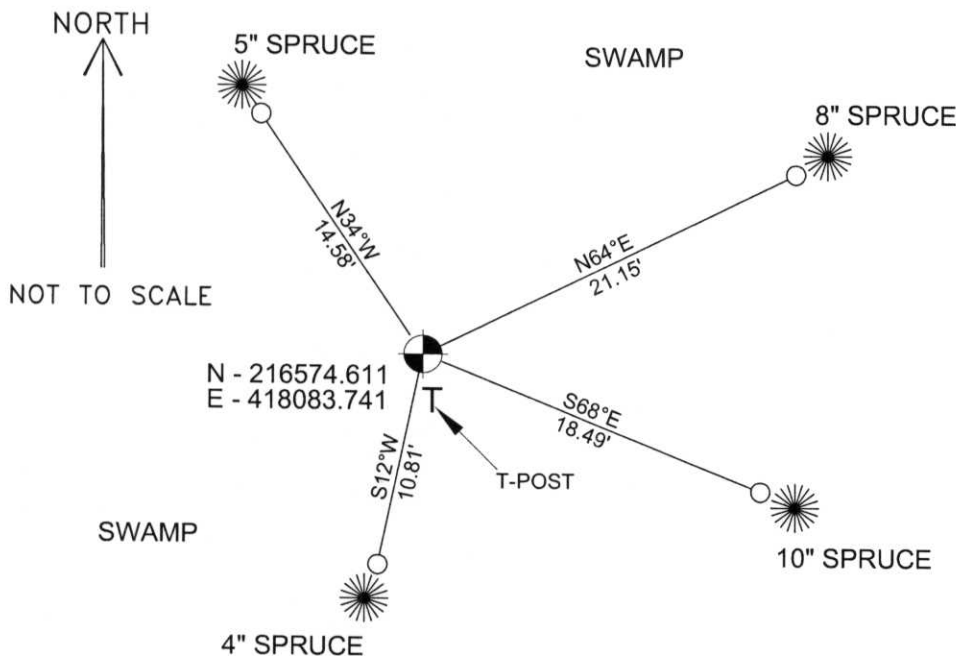
I found no evidence of the corner's original marker or witness trees. Stuart Folz filed a Land Corner Restoration sheet dated July 1, 1975 for the corner on which he states that he found a 6" x 6" granite stone as described on the sheet. Folz replaced the stone with a Lincoln Co. Berntsen (AL) monument. I found Folz's monument and accepted it as the best available evidence of the corner's original location. I tied the corner as shown below.

RECEIVED BY LINCOLN COUNTY
SURVEYOR THIS 19TH DAY

OF December 20 05

Tony Dallen
 COUNTY SURVEYOR

(c)(d)(e) Plan view of corner with ties to at least 4 witness monuments. If in disagreement with previously established corner, show the distances between the two corners and also indicate the ties to the disputed corner.



COORDINATES ARE REFERENCED TO THE LINCOLN COUNTY COORDINATE SYSTEM AS DEVELOPED BY THE WISCONSIN DEPARTMENT OF TRANSPORTATION AND ARE BASED ON GPS OBSERVATIONS TO CONTROL POINTS AS SUPPLIED BY LINCOLN COUNTY.

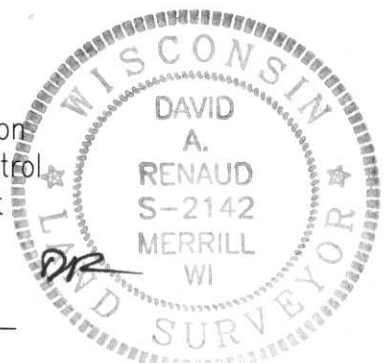
BEARINGS ARE REFERENCED TO MAGNETIC NORTH.

- - SET 3/4" x 30" REBAR W/ ALUM CAP
- ⊗ - NORTHEAST CORNER FOUND BERNTSEN MONUMENT

(i) I, David A. Renaud, RLS S-2142, certify that the corner location on this record was determined by me or under my direction and control and that this U.S. Public Land Survey Monument Record is correct and complete to the best of my knowledge and belief.

David Renaud
 Signature

12/16/05
 Date



Index No. 103478

U.S. PUBLIC LAND SURVEY MONUMENT RECORD

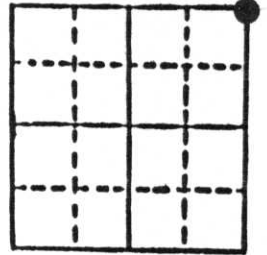
Note: This form is intended and designed to fulfill all requirements of Wisconsin Administrative Code, Chapter A-E 5.02, U.S. Public Land Survey Monument Record (3) (a) (b) (c) (d) (e) (f) (g) (h) (i). An additional sheet may be added if necessary to conform with said requirements.

(a) Corner location: Township 34 North

Range 7 East

Town Skanawan

County Lincoln

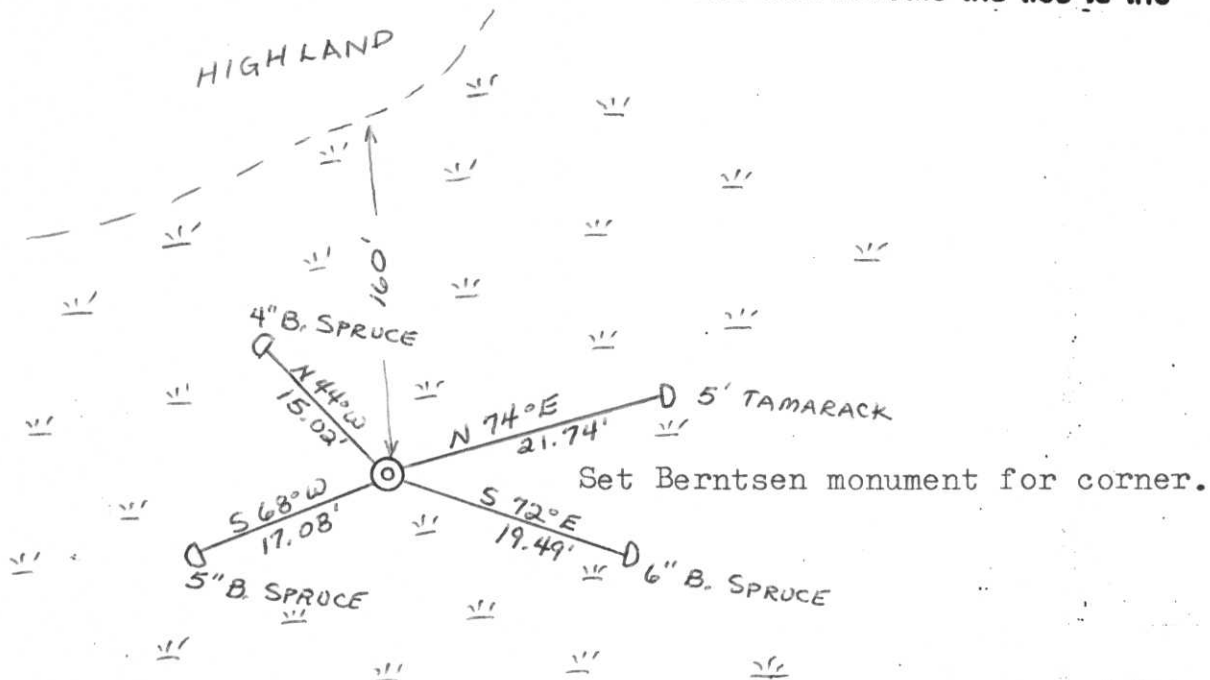


Section 15

b) (f) (g) (h) Description of monument found at this corner and if it was accepted, state all evidence (material, testimonial, occupational, plats, records, other monuments) used as a basis for accepting. If not accepted or if nothing was found, state evidence used as basis for establishing location. If reestablished through lost corner proportionate methods, indicate all monuments, distances and directions used to establish.

Original Gov't. Survey: Dec. 1854 by Jackson Prentice, set wood post for corner with bearings, tamarack 10 N 33° E 34 links; tamarack 11 N 41° W 8 links, tamarack 9 S 82° W 77 links & tamarack 8 S 23° E 50 links. Found post point in black spruce & tamarack swamp and used for corner. No bearings remain. Replaced post point with Berntsen monument for the corner.

c) (d) (e) Plan view of corner with ties to at least 4 witness monuments. If in disagreement with previously established corner, show the distances between the two corners and also indicate the ties to the disputed corner.



Set Berntsen monument for corner.

RECEIVED AT LINCOLN COUNTY
 COURTHOUSE THIS 27 DAY
 OF JAN 1986
 OF Lester J. Schmit
 TAX DESCRIPTION OFFICE

(i) I, Lester J. Schmit
 (type or print name) certify that the corner location on this record was determined by me or under my direction and control and that this U.S. Public Land Survey Monument Record is correct and complete to the best of my knowledge and belief.

Lester J. Schmit 7 Jan 86
 Signature Date



Index No. I-17