

U.S. PUBLIC LAND SURVEY MONUMENT RECORD

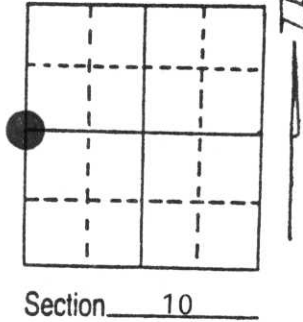
Note: This form is intended and designed to fulfill all requirements of Wisconsin Administrative Code, Chapter A-E 5.02, U.S. Public Land Survey Monument Record (3) (a) (b) (c) (d) (e) (f) (g) (h) (i). An additional sheet may be added if necessary to conform with said requirements.

(a) Corner location: Township 34 North

Range 7 East

Town/City/Village TN. OF SKANAWAN

County LINCOLN



(b) (f) (g) (h) Description of monument found at this corner and if it was accepted, state all evidence (material, testimonial, occupational, plats, records, other monuments) used as a basis for accepting. If not accepted or if nothing was found, state evidence used as basis for establishing location. If reestablished through lost corner proportionate methods, indicate all monuments, distances and directions used to establish.

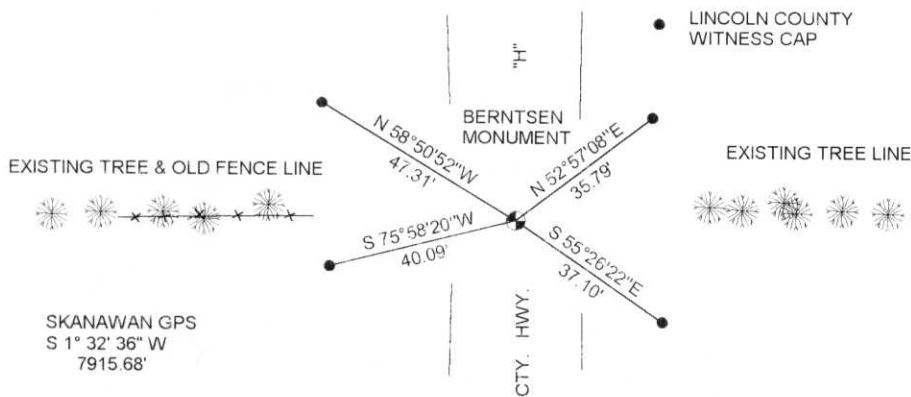
DEC. 1854 JACKSON PRENTICE SET A WOOD POST

JUNE 1997 I FOUND A 5 1/2"x6" CONCRETE MONUMENT LYING IN THE WEST DITCH OF CTY. HWY. "H" LOCAL RESIDENTS' STATE THE CORNER POSITION FALLS AT THE INTERSECTION OF A TREE LINE RUNNING EASTERLY AND A TREE & FENCE LINE RUNNING WESTERLY WITH THE CENTER LINE OF HWY. "H". WE EXCAVATED THE HIGHWAY AT THIS LOCATION AND FOUND NO EVIDENCE OF THE CORNER LOCATION.

I SET A BERNTSEN MONUMENT IN THE CENTER OF HWY. "H" AT ITS INTERSECTION WITH THE FENCE AND TREE LINES.

(c) (d) (e) Plan view of corner with ties to at least 4 witness monuments. If in disagreement with previously established corner, show the distances between the two corners and also indicate the ties to the disputed corner.

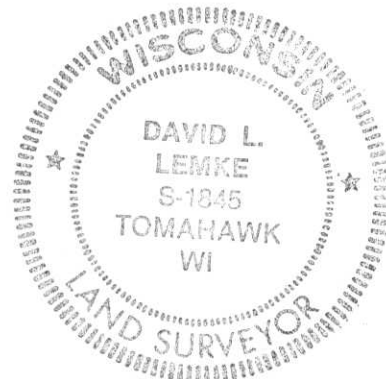
RECEIVED AT LINCOLN COUNTY
 COURTHOUSE THIS 10th DAY
 OF June 19 97
Patrick P. Shabel
 TAX DESCRIPTION OFFICE



(i) I, DAVID L. LEMKE S-1845
 (type or print name) certify that the corner location on this record was determined by me or under my direction and control and that this U.S. Public Land Survey Monument Record is correct and complete to the best of my knowledge and belief.

Signature *David L. Lemke*

JUN. 09 1997
 Date



Index No. 6-13