

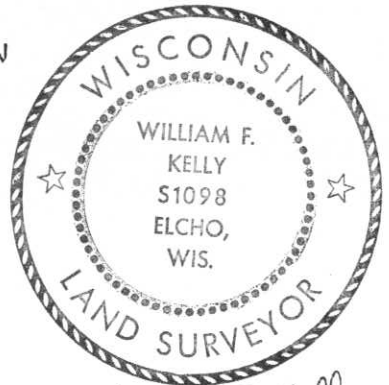
CERTIFIED LAND CORNER RESTORATION

Index No. I-11

State of Wisconsin }  
 County of LINCOLN } ss.

I WILLIAM F. KELLY, do hereby certify that on the 6<sup>th</sup> day of NOVEMBER, 19 75, I found evidence of the S 1/4 corner of SECTION 9 Township 34, North, Range 7E, Fourth, Principal Meridian, as described hereon; and that from this evidence I established a new monument and accessories as described hereon to perpetuate the original location of this corner.

Resident witnesses:  
 \_\_\_\_\_  
 \_\_\_\_\_  
 \_\_\_\_\_



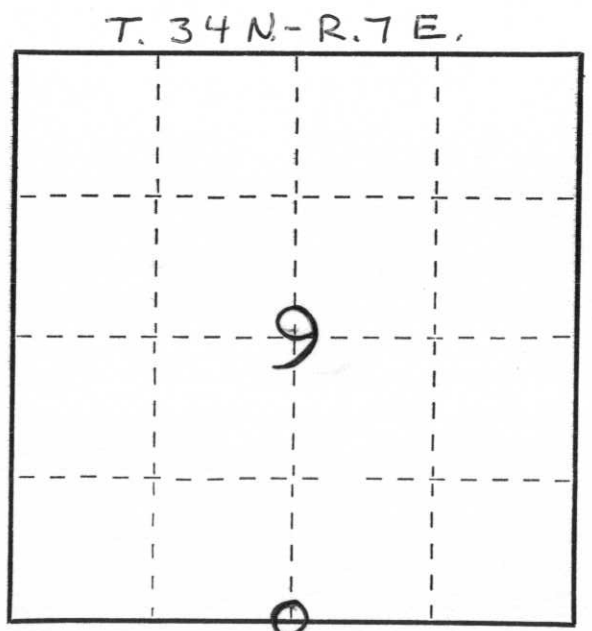
*William F. Kelly*  
 6 NOV. 1975

History of original corner establishment:

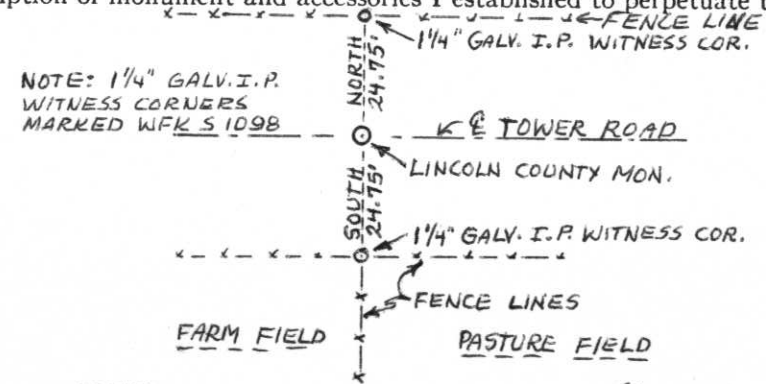
Description of corner evidence found:

Located bottom part of old Concrete Monument in Center of Tower Road.  
 Top of monument broken off by grader.

Description of monument and accessories I established to perpetuate the original location of this corner.



○ = Corner monument restored.



Set new aluminum monument 6" under surface of road.  
 Set two 1 1/4" x 30" Galv. Steel pipes as Witness Markers to the Corner Monument.



Monument marked:

Dated at ELCHO, Wis., this 6<sup>th</sup> day of NOVEMBER, 19 75.

Signature William F. Kelly Title REGISTERED LAND SURVEYOR Registration No. S 1098  
 (County Surveyor, Registered Land Surveyor, or other duly authorized official)

Office of Register of Deeds, County of \_\_\_\_\_, I hereby certify that the within instrument was filed in this office for record on the \_\_\_\_\_ day of \_\_\_\_\_, 19 \_\_\_\_\_ at \_\_\_\_\_ o'clock \_\_\_\_\_ M.

\_\_\_\_\_  
 (Register of Deeds)

By \_\_\_\_\_ Deputy

CERTIFIED LAND CORNER RESTORATION

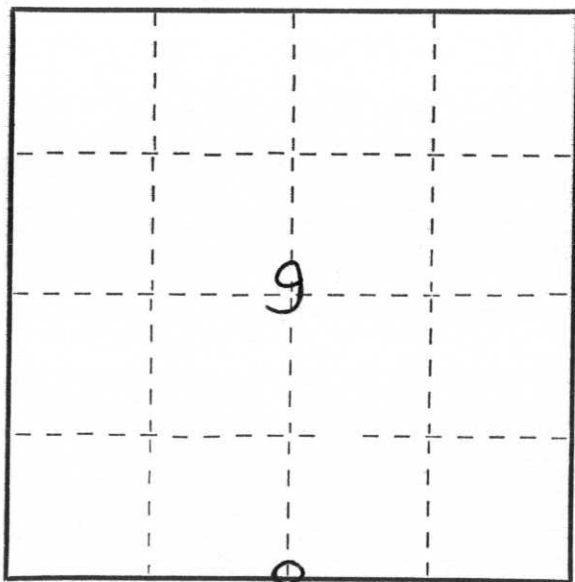
Index No. I-11

State of Wisconsin }  
County of LINCOLN } ss.

I DUANE A. GAU, do hereby certify that on the 25TH day of SEPTEMBER, 1978, I found evidence of the S $\frac{1}{4}$  corner of SECTION 9 Township 34, North, Range 7E, Fourth, Principal Meridian, as described hereon; and that from this evidence I established a new monument and accessories as described hereon to perpetuate the original location of this corner.

Resident witnesses:

.....  
.....  
.....



○ = Corner monument restored.

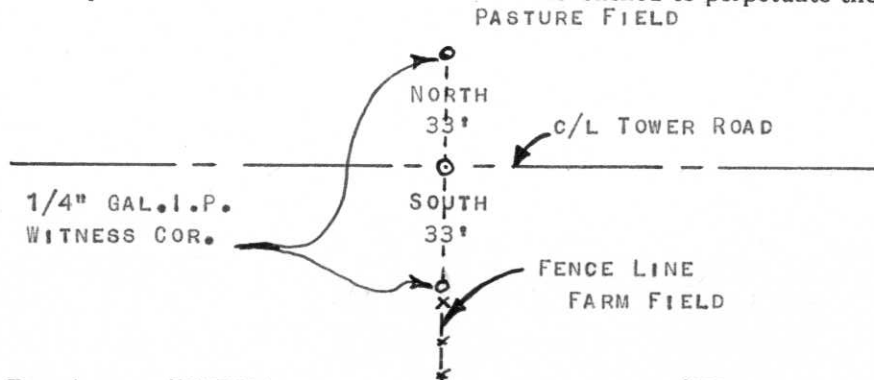
History of original corner establishment:

ALUMINUM SET 6TH DAY OF NOVEMBER, 1975 BY WILLIAM F. KELLY OF ELCHO, WISCONSIN. HE FOUND OLD CONCRETE MONUMENT IN CENTER OF TOWER ROAD, WITH THE TOP OF THE MONUMENT BROKEN OFF.

Description of corner evidence found:

LOCATED ALUMINUM MONUMENT 6" UNDER SURFACE OF ROAD.

Description of monument and accessories I established to perpetuate the original location of this corner.



NOTE: RELOCATED 1 1/4 GALV. I.P. WITNESS CORNERS MARKED EFK S1098, BECAUSE OF RECONSTRUCTION OF ROAD BED.

Dated at MERRILL, Wis., this 3RD day of OCTOBER, 1978

Signature Duane A. Gau Title LINCOLN CO. HIGHWAY COMMISSIONER Registration No. ....  
(County Surveyor, Registered Land Surveyor, or other duly authorized official)

Office of Register of Deeds, County of ....., I hereby certify that the within instrument was filed in this office for record on the ..... day of ....., 19..... at ..... o'clock ..... M.

.....  
(Register of Deeds)

By ..... Deputy