

# U.S. PUBLIC LAND SURVEY MONUMENT RECORD

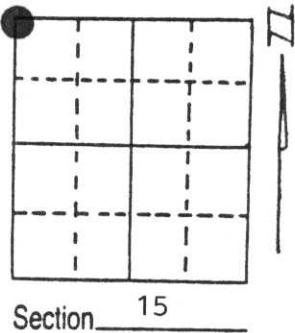
Note: This form is intended and designed to fulfill all requirements of Wisconsin Administrative Code, Chapter A-E 5.02, U.S. Public Land Survey Monument Record (3) (a) (b) (c) (d) (e) (f) (g) (h) (i). An additional sheet may be added if necessary to conform with said requirements.

(a) Corner location: Township 34 North

Range 7 East

Town/City/Village TN. OF SKANAWAN

County LINCOLN



(b) (f) (g) (h) Description of monument found at this corner and if it was accepted, state all evidence (material, testimonial, occupational, plats, records, other monuments) used as a basis for accepting. If not accepted or if nothing was found, state evidence used as basis for establishing location. If reestablished through lost corner proportionate methods, indicate all monuments, distances and directions used to establish.

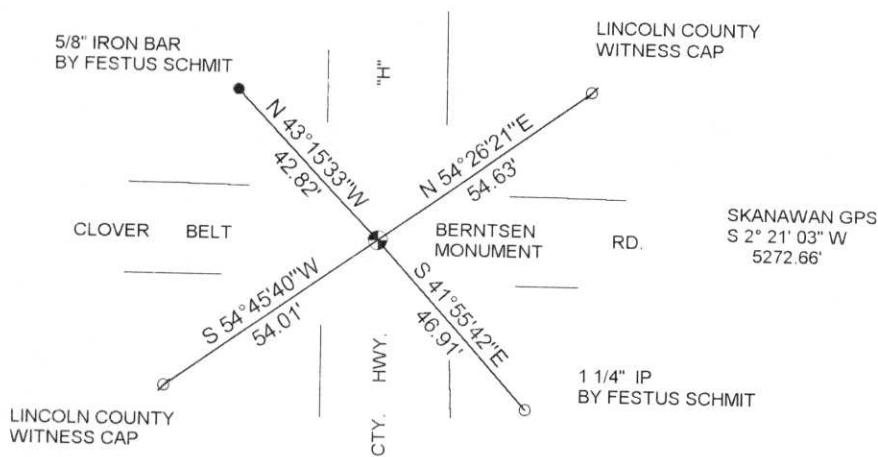
DEC. 1854 JACKSON PRENTICE SET A WOOD POST

MAY 1986 LESTER SCHMIT SET A BERNTSEN MONUMENT C/L C/L CLOVER BELT RD. & HWY. "H"

JUNE 1997 I FOUND THE MONUMENT SET BY LESTER SCHMIT.

(c) (d) (e) Plan view of corner with ties to at least 4 witness monuments. If in disagreement with previously established corner, show the distances between the two corners and also indicate the ties to the disputed corner.

RECEIVED AT LINCOLN COUNTY  
 COURTHOUSE THIS 10th DAY  
 OF June 1997  
*Patrick R. Pruebe*  
 TAX DESCRIPTION OFFICE



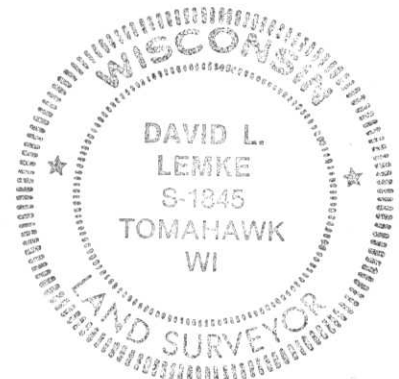
(i) I, DAVID L. LEMKE S-1845  
 (type or print name) certify that the corner location on this record was determined by me or under my direction and control and that this U.S. Public Land Survey Monument Record is correct and complete to the best of my knowledge and belief.

Signature

*David L. Lemke*

JUN. 09 1997

Date



Index No. I-13

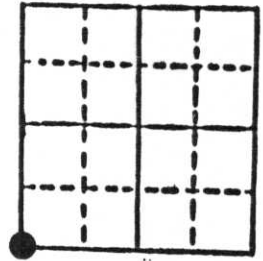
# U.S. PUBLIC LAND SURVEY MONUMENT RECORD

**Note:** This form is intended and designed to fulfill all requirements of Wisconsin Administrative Code, Chapter A-E 5.02, U.S. Public Land Survey Monument Record (3) (a) (b) (c) (d) (e) (f) (g) (h) (i). An additional sheet may be added if necessary to conform with said requirements.

(a) Corner location: Township 34 North  
 Range 7 East

Town Skanawan

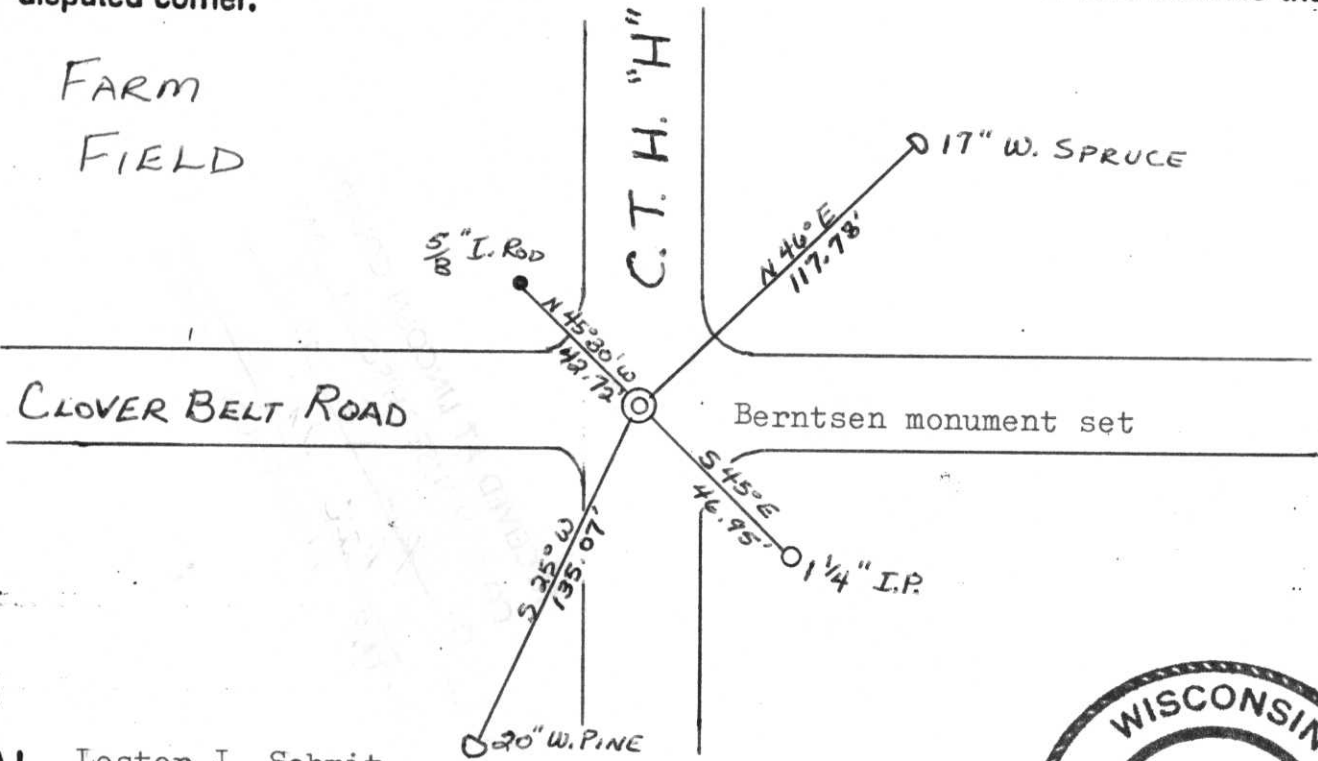
County Lincoln



Section 10

b) (f) (g) (h) Description of monument found at this corner and if it was accepted, state all evidence (material, testimonial, occupational, plats, records, other monuments) used as a basis for accepting. If not accepted or if nothing was found, state evidence used as basis for establishing location. If reestablished through lost corner proportionate methods, indicate all monuments, distances and directions used to establish. Original Gov't. Survey: Dec. 1854 by Jackson Prentice, set wood post for corner with bearings, pine 12 S 58° W 42 links; pine 12 S 27° E 20 links, pine 10 N 35° E 33 links & pine 11 N 2° W 45 links. No evidence of corner or bearings were found. Also no small parcels had been surveyed which are close to this corner. For lack of any better evidence I used the centre-line intersections of County Trunk Highway "H" and Clover Belt Road for the corner location. Set Berntsen monument for corner.

c) (d) (e) Plan view of corner with ties to at least 4 witness monuments. If in disagreement with previously established corner, show the distances between the two corners and also indicate the ties to the disputed corner.



(i) I, Lester J. Schmit  
 (Type or print name) certify that the corner location on this record was determined by me or under my direction and control and that this U.S. Public Land Survey Monument Record is correct and complete to the best of my knowledge and belief.

Lester J. Schmit 12 May 86  
 Signature Date



Index No. I-13