

# U.S. PUBLIC LAND SURVEY MONUMENT RECORD

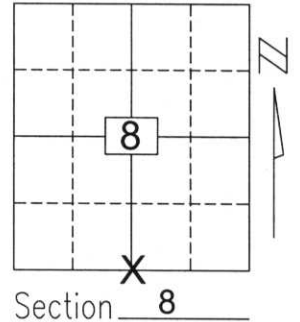
Note: This form is intended and designed to fulfill all requirements of Wisconsin Administrative Code, Chapter A-E 5.02, U.S. Public Land Survey Monument Record (3)(a)(b)(c)(d)(e)(f)(g)(h)(i). An additional sheet may be added if necessary to conform with said requirements.

(a) Corner location: Township 34 North

Range 7 East

Town/City/Village SKANAWAN

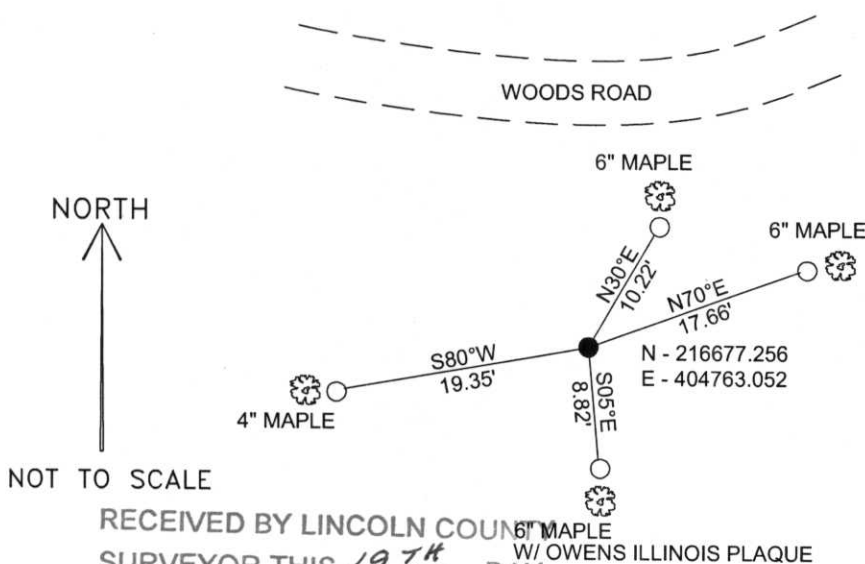
County LINCOLN



(b)(f)(g)(h) Description of monument found at this corner and if it was accepted, state all evidence (material, testimonial, occupational, plats, records, other monuments) used as a basis for accepting. If not accepted or if nothing was found, state evidence used as basis for establishing location. If reestablished through lost corner proportionate methods, indicate all monuments, distances and directions used to establish.

I found no original corner markers or witness trees. I found a 1-1/4-in. capped iron pipe stamped with section numbers at the corner apparently set by Owens Illinois as part of their land management surveys. No record of this survey or other survey for this corner was found. This pipe fell within 5 feet of the midpoint of a line between the corner to Sections 7, 8, 17 & 18, and the corner to Sections 8, 9, 16 & 17. I accepted the pipe as the best available evidence of the corner's original location. I tied the corner as shown below.

(c)(d)(e) Plan view of corner with ties to at least 4 witness monuments. If in disagreement with previously established corner, show the distances between the two corners and also indicate the ties to the disputed corner.



COORDINATES ARE REFERENCED TO THE LINCOLN COUNTY COORDINATE SYSTEM AS DEVELOPED BY THE WISCONSIN DEPARTMENT OF TRANSPORTATION AND WERE DETERMINED BY GPS OBSERVATIONS ON CONTROL POINTS AS SUPPLIED BY LINCOLN COUNTY.

BEARINGS ARE REFERENCED TO MAGNETIC NORTH.

○ - SET 3/4" x 30" REBAR W/ ALUM CAP

● - NORTH 1/4 CORNER FOUND CAPPED 1 1/2 INCH IRON PIPE


(i) I, David A. Renaud, RLS S-2142, certify that the corner location on this record was determined by me or under my direction and control and that this U.S. Public Land Survey Monument Record is correct and complete to the best of my knowledge and belief.

David Renaud 12/15/07  
Signature Date



Index No. 83477

I-7



173472