

U.S. PUBLIC LAND SURVEY MONUMENT RECORD

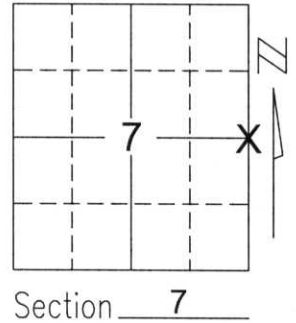
Note: This form is intended and designed to fulfill all requirements of Wisconsin Administrative Code, Chapter A-E 5.02, U.S. Public Land Survey Monument Record (3)(a)(b)(c)(d)(e)(f)(g)(h)(i). An additional sheet may be added if necessary to conform with said requirements.

(a) Corner location: Township 34 North

Range 7 East

Town/City/Village SKANAWAN

County LINCOLN

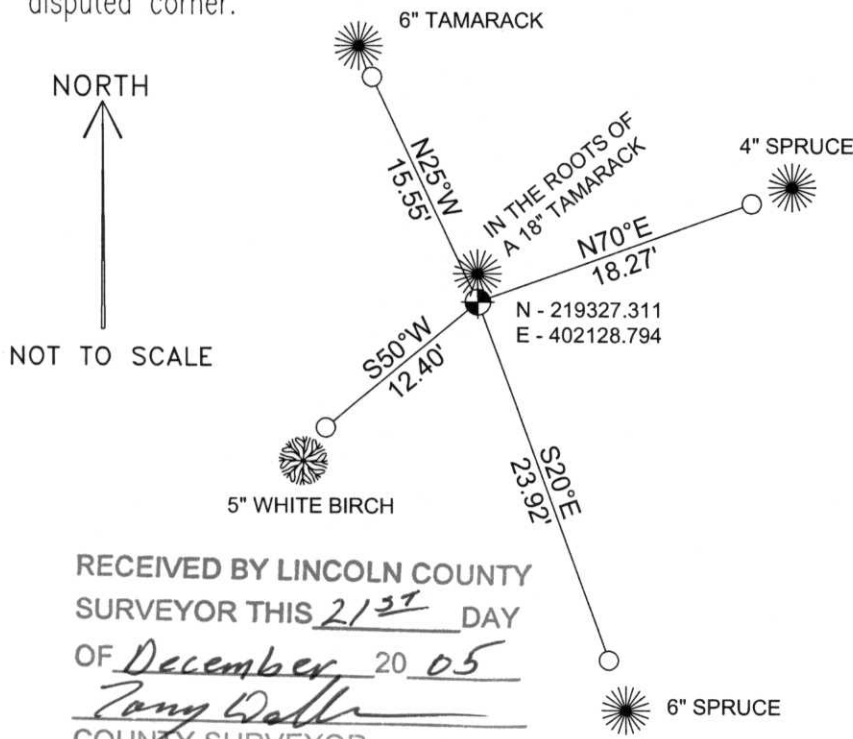


Section 7

(b)(f)(g)(h) Description of monument found at this corner and if it was accepted, state all evidence (material, testimonial, occupational, plats, records, other monuments) used as a basis for accepting. If not accepted or if nothing was found, state evidence used as basis for establishing location. If reestablished through lost corner proportionate methods, indicate all monuments, distances and directions used to establish.

I found no evidence of the corner's original marker or witness trees. I found no usable evidence of occupation or other indication of the corner's original location in either Section 7 or 8. I found an iron pipe that seems to be at the center of Section 8. As part of this survey I set the corners to Sections 5, 6, 7 & 8, the corner between Sections 8 & 9, and the corner to Sections 7, 8, 17 & 18 as noted and described on the Monument Record sheets filed by me for those corners. I accepted as the best available evidence of the corner's original location the found pipe and the locations of the above mentioned section corners and set a Lincoln Co. Berntsen monument at the intersection of the line from the corner to Sections 5, 6, 7 & 8 to the corner to Sections 7, 8, 17 & 18, and a line extended West from the corner between Sections 8 & 9 to the pipe found at the center of Section 8. I tied the corner as shown below.

(c)(d)(e) Plan view of corner with ties to at least 4 witness monuments. If in disagreement with previously established corner, show the distances between the two corners and also indicate the ties to the disputed corner.



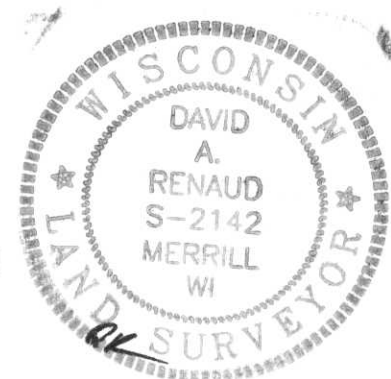
COORDINATES ARE REFERENCED TO THE LINCOLN COUNTY COORDINATE SYSTEM AS DEVELOPED BY THE WISCONSIN DEPARTMENT OF TRANSPORTATION AND ARE BASED ON GPS OBSERVATIONS TO CONTROL POINTS AS SUPPLIED BY LINCOLN COUNTY.

BEARINGS ARE REFERENCED TO MAGNETIC NORTH.

○ - SET 3/4" x 30" REBAR W/ ALUM CAP

● - BERNTSEN MONUMENT SET

RECEIVED BY LINCOLN COUNTY SURVEYOR THIS 21ST DAY OF December 20 05
Zany Wells
 COUNTY SURVEYOR



Index No. 73475

(i) I, David A. Renaud, RLS S-2142, certify that the corner location on this record was determined by me or under my direction and control and that this U.S. Public Land Survey Monument Record is correct and complete to the best of my knowledge and belief.

David Renaud 12/20/05
 Signature Date

G-5

734.75

