

U.S. PUBLIC LAND SURVEY MONUMENT RECORD

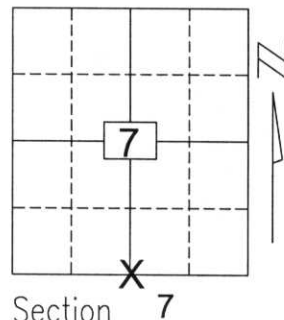
Note: This form is intended and designed to fulfill all requirements of Wisconsin Administrative Code, Chapter A-E 5.02, U.S. Public Land Survey Monument Record (3)(a)(b)(c)(d)(e)(f)(g)(h)(i). An additional sheet may be added if necessary to conform with said requirements.

(a) Corner location: Township 34 North

Range 7 East

Town/City/Village SKANAWAN

County LINCOLN

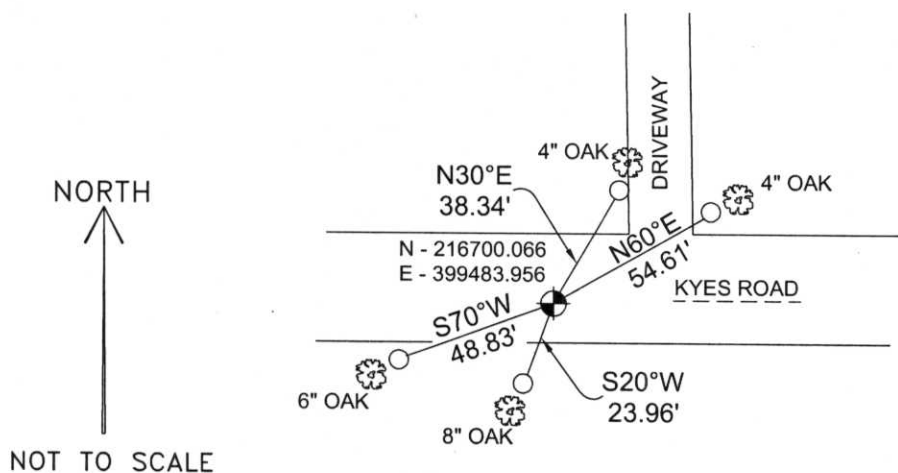


Section 7

(b)(f)(g)(h) Description of monument found at this corner and if it was accepted, state all evidence (material, testimonial, occupational, plats, records, other monuments) used as a basis for accepting. If not accepted or if nothing was found, state evidence used as basis for establishing location. If reestablished through lost corner proportionate methods, indicate all monuments, distances and directions used to establish.

I found a Berntsen monument at the corner. This location fit occupation lines in Section 18 (no usable evidence or indication of the corner's original location was found in Section 7), fell within Kyes Road, and fit within reason to original measurements of this section line. I accepted the monument as the best available evidence of the corner's original location. I tied the corner as shown below.

(c)(d)(e) Plan view of corner with ties to at least 4 witness monuments. If in disagreement with previously established corner, show the distances between the two corners and also indicate the ties to the disputed corner.



COORDINATES ARE REFERENCED TO THE LINCOLN COUNTY COORDINATE SYSTEM AS DEVELOPED BY THE WISCONSIN DEPARTMENT OF TRANSPORTATION AND ARE BASED ON GPS OBSERVATIONS TO CONTROL POINTS AS SUPPLIED BY LINCOLN COUNTY.

BEARINGS ARE REFERENCED TO MAGNETIC NORTH.

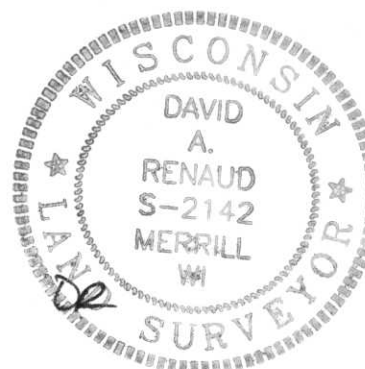
○ - SET 3/4" x 30" REBAR W/ ALUM CAP

● - BERNTSEN MONUMENT


RECEIVED BY LINCOLN COUNTY SURVEYOR THIS 19TH DAY OF December 20 05
Tomy Dall
 COUNTY SURVEYOR

(i) I, David A. Renaud, RLS S-2142, certify that the corner location on this record was determined by me or under my direction and control and that this U.S. Public Land Survey Monument Record is correct and complete to the best of my knowledge and belief.

David Renaud 12/15/05
 Signature Date



Index No. 73477

A photograph showing a circular hole in the ground, possibly a well or a small excavation. The hole is filled with dark, moist earth and has a rough, irregular edge. The surrounding ground is composed of dark soil and small, light-colored pebbles. In the foreground, a white rectangular label is placed on the ground, featuring the number '183472' printed in black. The label has two small, dark, irregular spots on it, one on the left and one on the right. The lighting is somewhat dim, suggesting an outdoor setting in low light or a shaded area.

183472