

# U.S. PUBLIC LAND SURVEY MONUMENT RECORD

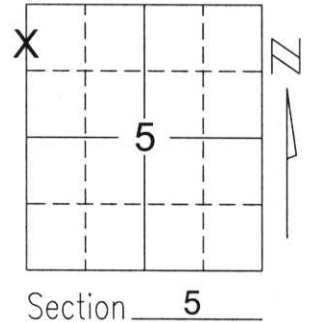
Note: This form is intended and designed to fulfill all requirements of Wisconsin Administrative Code, Chapter A-E 5.02, U.S. Public Land Survey Monument Record (3)(a)(b)(c)(d)(e)(f)(g)(h)(i). An additional sheet may be added if necessary to conform with said requirements.

(a) Corner location: Township 34 North

Range 7 East

Town/City/Village SKANAWAN

County LINCOLN



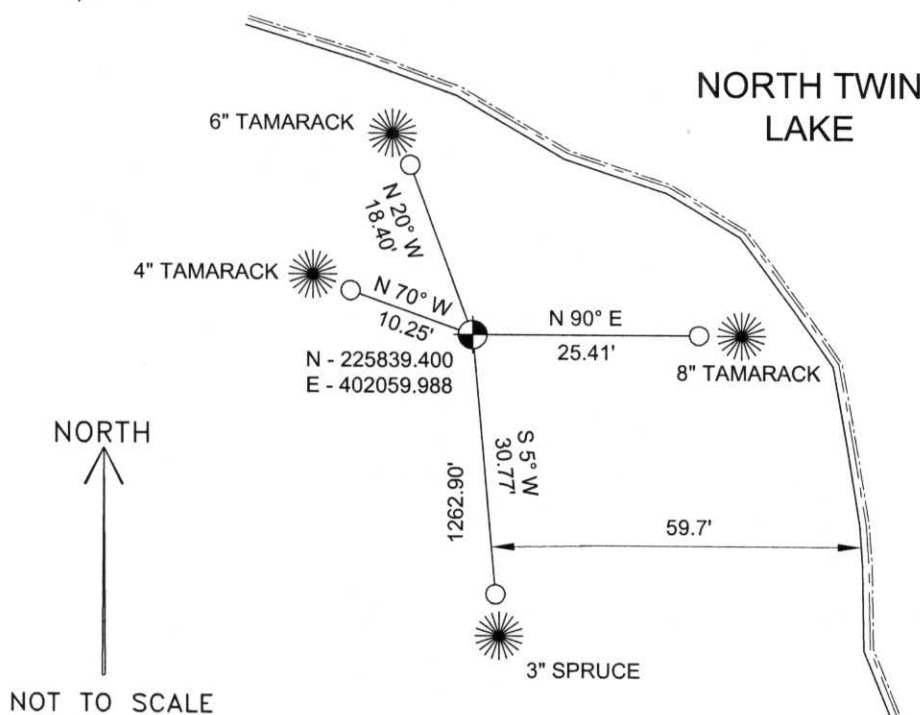
Section 5

(b)(f)(g)(h) Description of monument found at this corner and if it was accepted, state all evidence (material, testimonial, occupational, plats, records, other monuments) used as a basis for accepting. If not accepted or if nothing was found, state evidence used as basis for establishing location. If reestablished through lost corner proportionate methods, indicate all monuments, distances and directions used to establish.

There was no meander corner set at this location in the original survey. As part of this survey I set the 1/4 corner between Sections 5 & 6 as described on the Monument Record Sheet filed by me for that corner. I also measured to find iron pipes as shown on a survey filed by Sheridan Schwark on which he shows the line between Sections 5 & 6 as being computed as a straight line along its entire length through these sections. I found no usable evidence in Sections 5 & 6 to indicate that the original location of the section line differs from that as shown on this map and therefore accepted the line to be extended North from the corner between Sections 5, 6, 7 & 8 through the corner between Sections 5 & 6 to the corner between Sections 5 & 6 and Sections 31 & 32, T35N, R7E as the best available evidence of the line's original location. I set a Lincoln Co. Berntsen monument on this line south of the shore of Twin Lake and tied the meander corner as shown below.

RECEIVED BY LINCOLN COUNTY  
SURVEYOR THIS 21<sup>ST</sup> DAY  
OF December 20 05  
Tony Dell  
COUNTY SURVEYOR

(c)(d)(e) Plan view of corner with ties to at least 4 witness monuments. If in disagreement with previously established corner, show the distances between the two corners and also indicate the ties to the disputed corner.



COORDINATES ARE REFERENCED TO THE LINCOLN COUNTY COORDINATE SYSTEM AS DEVELOPED BY THE WISCONSIN DEPARTMENT OF TRANSPORTATION AND ARE BASED ON GPS OBSERVATIONS TO CONTROL POINTS AS SUPPLIED BY LINCOLN COUNTY.

BEARINGS ARE REFERENCED TO MAGNETIC NORTH.

- - SET 3/4" x 30" REBAR W/ ALUM CAP
- - BERNTSEN MONUMENT SET



Index No. 534713

(i) I, David A. Renaud, RLS S-2142, certify that the corner location on this record was determined by me or under my direction and control and that this U.S. Public Land Survey Monument Record is correct and complete to the best of my knowledge and belief.

David Renaud

12/20/05

Signature

Date

AB-5