

U.S. PUBLIC LAND SURVEY MONUMENT RECORD

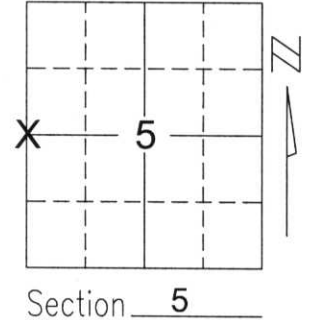
Note: This form is intended and designed to fulfill all requirements of Wisconsin Administrative Code, Chapter A-E 5.02, U.S. Public Land Survey Monument Record (3)(a)(b)(c)(d)(e)(f)(g)(h)(i). An additional sheet may be added if necessary to conform with said requirements.

(a) Corner location: Township 34 North

Range 7 East

Town/City/Village SKANAWAN

County LINCOLN



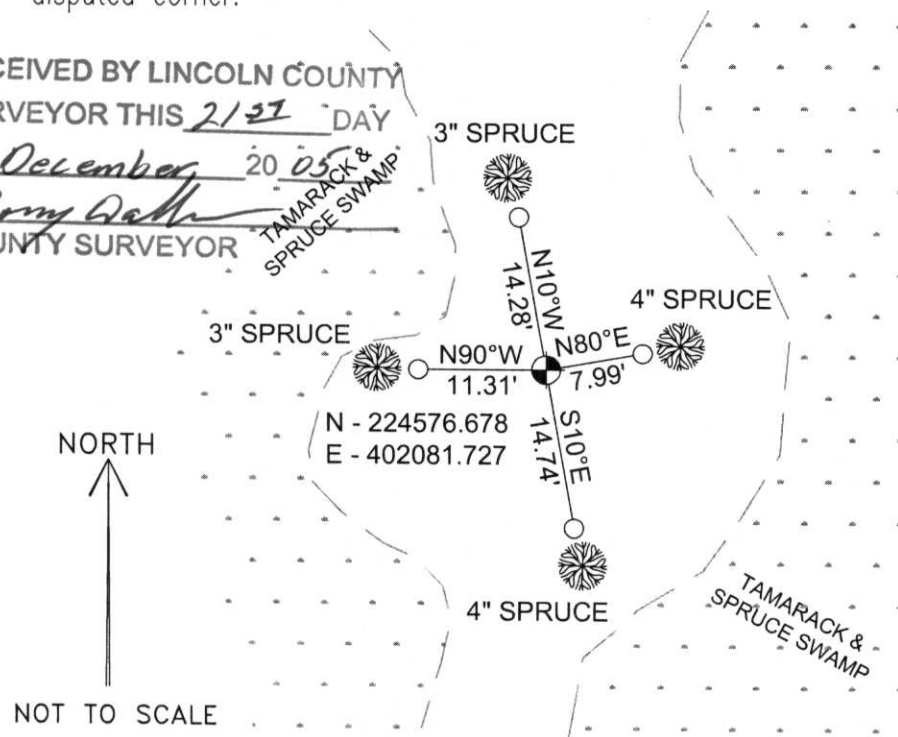
Section 5

(b)(f)(g)(h) Description of monument found at this corner and if it was accepted, state all evidence (material, testimonial, occupational, plats, records, other monuments) used as a basis for accepting. If not accepted or if nothing was found, state evidence used as basis for establishing location. If reestablished through lost corner proportionate methods, indicate all monuments, distances and directions used to establish.

I found no evidence of the corner's original marker or witness trees. Sheridan Schwark filed a map in showing the location of this corner as computed. This map also shows an iron pipe at the center of Section 6 which I measured to and located. I also measured to the West 1/4 corner of Section 6 and set the corner between Sections 5, 6, 7 & 8 as part of this survey (see Monument Record Sheet for additional notes and info). I determined the location of the corner between Section 5 & 6, T34N, R7E and Sections 31 & 32, T35N, R7E by measuring to found monuments at section and meander corners as shown on a Monument Record Sheet filed by Dennis B. Roberts in September 2003 and computed the location of the corner, which falls in Twin Lake. I accepted the maps and found monuments as the best available evidence of the corner's original location and set a Lincoln Co. Berntsen monument at the intersection of a line from the West 1/4 corner of Section 6 extended east through the pipe at the center of Section 6, and a line from the corner between Sections 5, 6, 7 & 8 and the corner between Section 5 & 6, T34N, R7E and Sections 31 & 32, T35N, R7E. I set a Lincoln Co. Berntsen monument at the corner and tied as shown below.

(c)(d)(e) Plan view of corner with ties to at least 4 witness monuments. If in disagreement with previously established corner, show the distances between the two corners and also indicate the ties to the disputed corner.

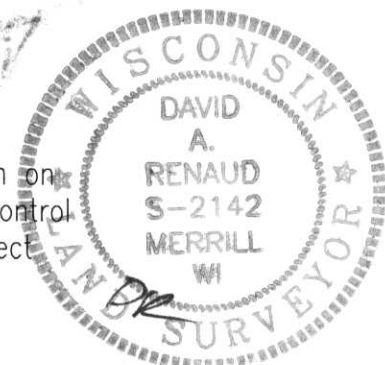
RECEIVED BY LINCOLN COUNTY
SURVEYOR THIS 21ST DAY
OF December 20 05
Zony Dahl
COUNTY SURVEYOR



COORDINATES ARE REFERENCED TO THE LINCOLN COUNTY COORDINATE SYSTEM AS DEVELOPED BY THE WISCONSIN DEPARTMENT OF TRANSPORTATION AND ARE BASED ON GPS OBSERVATIONS TO CONTROL POINTS AS SUPPLIED BY LINCOLN COUNTY.

BEARINGS ARE REFERENCED TO MAGNETIC NORTH.

- - SET 3/4" x 30" REBAR W/ ALUM CAP
- - BERNTSEN MONUMENT SET



(i) I, David A. Renaud, RLS S-2142, certify that the corner location on this record was determined by me or under my direction and control and that this U.S. Public Land Survey Monument Record is correct and complete to the best of my knowledge and belief.

David Renaud 12/20/05
Signature Date

Index No. 53474

C-5

SM
UA
RR
VK
EE
YR

53474