

U.S. PUBLIC LAND SURVEY MONUMENT RECORD

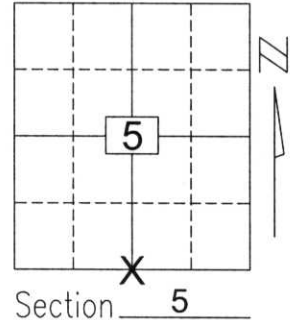
Note: This form is intended and designed to fulfill all requirements of Wisconsin Administrative Code, Chapter A-E 5.02, U.S. Public Land Survey Monument Record (3)(a)(b)(c)(d)(e)(f)(g)(h)(i). An additional sheet may be added if necessary to conform with said requirements.

(a) Corner location: Township 34 North

Range 7 East

Town/City/Village SKANAWAN

County LINCOLN

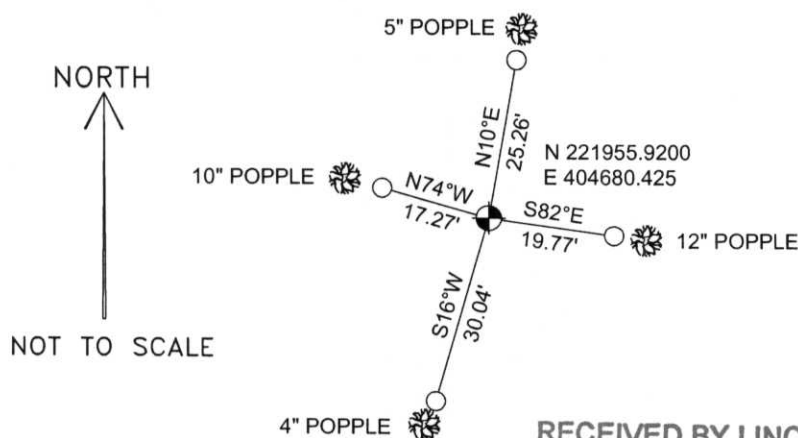


Section 5

(b)(f)(g)(h) Description of monument found at this corner and if it was accepted, state all evidence (material, testimonial, occupational, plats, records, other monuments) used as a basis for accepting. If not accepted or if nothing was found, state evidence used as basis for establishing location. If reestablished through lost corner proportionate methods, indicate all monuments, distances and directions used to establish.

No evidence of the original corner marker or witness trees were found. I found an iron pipe at the center of Section 8 a half mile south of this corner, and determined the East & West location for this corner by extending a line from the South 1/4 corner of Section 8 through this pipe then north to the line between Sections 5 and 8. This spot fit the centerline of an existing road running south for a quarter mile from the North 1/4 corner of Section 5 along the North & South 1/4 line of Section 5. I accepted this found pipe and road as the best evidence of the corner's original location in the East & West location. To locate the corner in the North & South location, due to a lack of any other evidence or indications, I put the corner on a line between the corner to Sections 5, 6, 7 & 8, and the corner to Sections 4, 5, 8 & 9 and accepted this spot as the best evidence of the corner's original location. I set and tied out the corner as shown below.

(c)(d)(e) Plan view of corner with ties to at least 4 witness monuments. If in disagreement with previously established corner, show the distances between the two corners and also indicate the ties to the disputed corner.



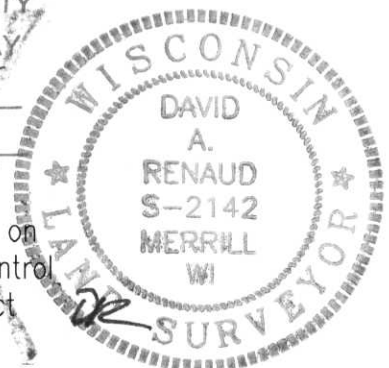
COORDINATES ARE REFERENCED TO THE LINCOLN COUNTY COORDINATE SYSTEM AS DEVELOPED BY THE WISCONSIN DEPARTMENT OF TRANSPORTATION AND ARE BASED ON GPS OBSERVATIONS TO CONTROL POINTS AS SUPPLIED BY LINCOLN COUNTY.

BEARINGS ARE REFERENCED TO MAGNETIC NORTH.

○ - SET 3/4" x 30" REBAR W/ ALUM CAP

● - BERNTSEN MONUMENT SET

RECEIVED BY LINCOLN COUNTY SURVEYOR THIS 21ST DAY OF December 20 05
Tommy Dall
 COUNTY SURVEYOR



(i) I, David A. Renaud, RLS S-2142, certify that the corner location on this record was determined by me or under my direction and control and that this U.S. Public Land Survey Monument Record is correct and complete to the best of my knowledge and belief.

David Renaud 12/21/05
 Signature Date

Index No. 53477

SM
UA
RR
VK
EE
YR

53477

