

# U.S. PUBLIC LAND SURVEY MONUMENT RECORD

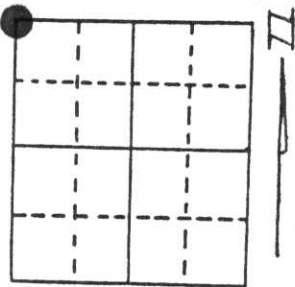
Note: This form is intended and designed to fulfill all requirements of Wisconsin Administrative Code, Chapter A-E 5.02, U.S. Public Land Survey Monument Record (3) (a) (b) (c) (d) (e) (f) (g) (h) (i). An additional sheet may be added if necessary to conform with said requirements.

(a) Corner location: Township 34 North

Range 7 East

Town/City/Village TN. OF SKANAWAN

County LINCOLN



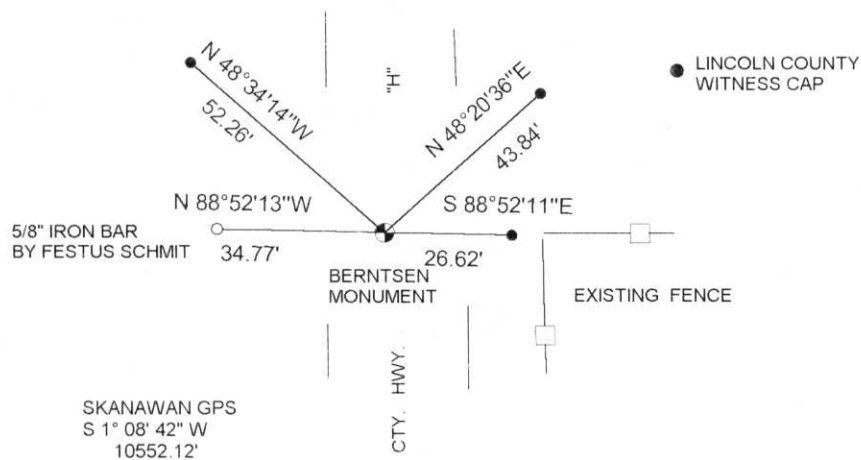
Section 10

(b) (f) (g) (h) Description of monument found at this corner and if it was accepted, state all evidence (material, testimonial, occupational, plats, records, other monuments) used as a basis for accepting. If not accepted or if nothing was found, state evidence used as basis for establishing location. If reestablished through lost corner proportionate methods, indicate all monuments, distances and directions used to establish.

DEC. 1854 JACKSON PRENTICE SET A WOOD POST  
 MAY 1986 LESTER SCHMIT SET A BERNTSEN MONUMENT  
 MAY 1997 I FOUND THE MONUMENT SET BY LESTER SCHMIT AND 3 OF HIS TIES TO THE CORNER POSITION.

(c) (d) (e) Plan view of corner with ties to at least 4 witness monuments. If in disagreement with previously established corner, show the distances between the two corners and also indicate the ties to the disputed corner.

RECEIVED AT LINCOLN COUNTY  
 COURTHOUSE THIS 10th DAY  
 OF June 19 97  
*(Signature)*  
 TAX DESCRIPTION OFFICE



(i) I, DAVID L. LEMKE S-1845  
 (type or print name) certify that the corner location on this record was determined by me or under my direction and control and that this U.S. Public Land Survey Monument Record is correct and complete to the best of my knowledge and belief.

Signature *(Signature)*

Date JUN. 09 1997



Index No. E-13

# U.S. PUBLIC LAND SURVEY MONUMENT RECORD

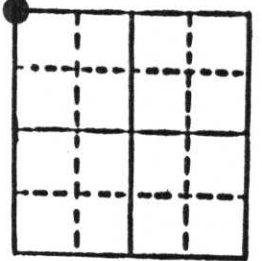
**Note:** This form is intended and designed to fulfill all requirements of Wisconsin Administrative Code, Chapter A-E 5.02, U.S. Public Land Survey Monument Record (3) (a) (b) (c) (d) (e) (f) (g) (h) (i). An additional sheet may be added if necessary to conform with said requirements.

(a) Corner location: Township 34 North

Range 7 East

Town Skanawan

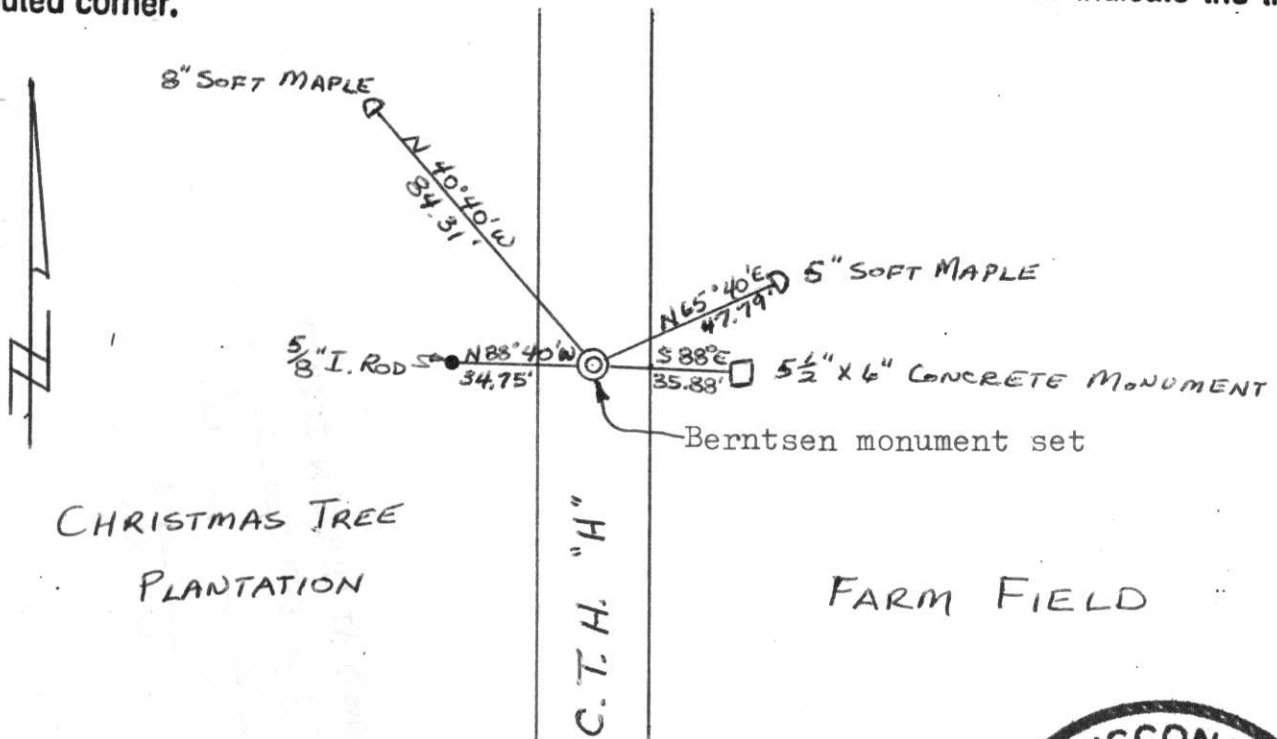
County Lincoln



Section 10

b) (f) (g) (h) Description of monument found at this corner and if it was accepted, state all evidence (material, testimonial, occupational, plats, records, other monuments) used as a basis for accepting. If not accepted or if nothing was found, state evidence used as basis for establishing location. If reestablished through lost corner proportionate methods, indicate all monuments, distances and directions used to establish. Original Gov't. Survey: Dec. 1854 by Jackson Prentice, set wood post for corner with bearings, aspen 11 N 41° E 38 links, aspen 10 S 70° E 19 links, pine 8 S 28° W 30 links & aspen 12 N 55° W 40 links. I found a 5½" x 6" concrete monument lying in the east ditch line of County Trunk Highway "H" but nothing to mark actual corner location. Using an old fence line to the east and its westerly extension to intersection with the centre-line of County Trunk Highway "H" and set Berntsen monument at said intersection for corner. This location fits well with evidence found on section line north to the township line.

c) (d) (e) Plan view of corner with ties to at least 4 witness monuments. If in disagreement with previously established corner, show the distances between the two corners and also indicate the ties to the disputed corner.



(i) I, Lester J. Schmit

(type or print name) certify that the corner location on this record was determined by me or under my direction and control and that this U.S. Public Land Survey Monument Record is correct and complete to the best of my knowledge and belief.

Lester J. Schmit  
Signature

12 May 86  
Date



Index No. E-13