

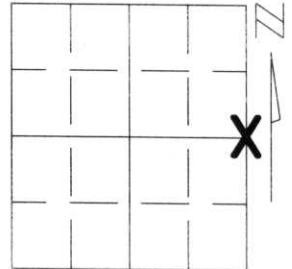
# U.S. PUBLIC LAND SURVEY MONUMENT RECORD

Note: This form is intended and designed to fulfill all requirements of Wisconsin Administrative Code, Chapter A-E 5.02, U.S. Public Land Survey Monument Record (3)(a)(b)(c)(d)(e)(f)(g)(h)(i). An additional sheet may be added if necessary to conform with said requirements.

(a) Corner location: Township 34 North  
 Range 7 East

Town/City/Village SKANAWAN

County LINCOLN

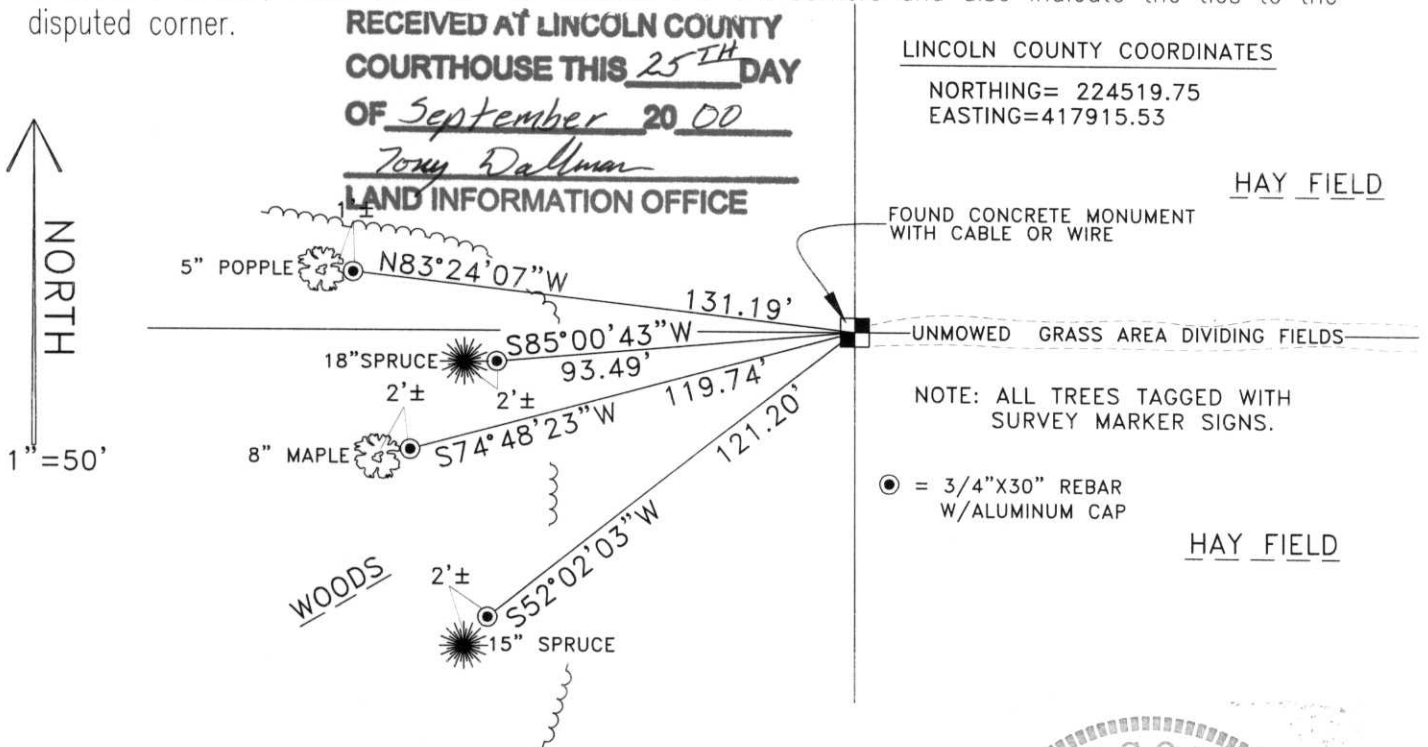


Section 3

(b)(f)(g)(h) Description of monument found at this corner and if it was accepted, state all evidence (material, testimonial, occupational, plats, records, other monuments) used as a basis for accepting. If not accepted or if nothing was found, state evidence used as basis for establishing location. If reestablished through lost corner proportionate methods, indicate all monuments, distances and directions used to establish.

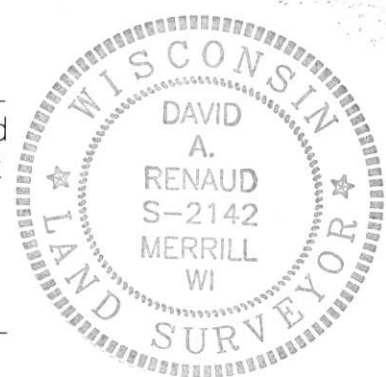
I FOUND NO EVIDENCE OF THE ORIGINAL CORNER'S MONUMENTATION OR ACCESSORIES. I DID FIND A CONCRETE MONUMENT EMBEDDED WITH A WIRE OR CABLE AT A "FIELD ROW" RUNNING EAST FROM THE CORNER AND A OLD DOWNED FENCE LINE RUNNING WEST. THIS MONUMENT WAS SET BY THE TOWN OF SKANAWAN DURING A REMONUMENTATION PROGRAM AS PER PAT PRIEBE, LINCOLN COUNTY LAND INFORMATION OFFICE. I ACCEPTED THIS MONUMENT AS THE BEST EVIDENCE OF THE CORNER'S ORIGINAL LOCATION FOR THE EAST 1/4 CORNER OF SECTION 3.

(c)(d)(e) Plan view of corner with ties to at least 4 witness monuments. If in disagreement with previously established corner, show the distances between the two corners and also indicate the ties to the disputed corner.



(i) I, DAVID A. RENAUD  
 (type or print name) certify that the corner location on this record was determined by me or under my direction and control and that this U.S. Public Land Survey Monument Record is correct and complete to the best of my knowledge and belief.

David A. Renaud Sept. 17, 2000  
 Signature Date



Index No. C-17