

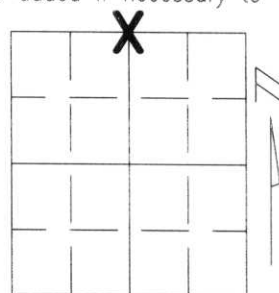
U.S. PUBLIC LAND SURVEY MONUMENT RECORD

Note: This form is intended and designed to fulfill all requirements of Wisconsin Administrative Code, Chapter A-E 5.02, U.S. Public Land Survey Monument Record (3)(a)(b)(c)(d)(e)(f)(g)(h)(i). An additional sheet may be added if necessary to conform with said requirements.

(a) Corner location: Township 34 North
Range 7 East

Town/City/Village SKANAWAN

County LINCOLN

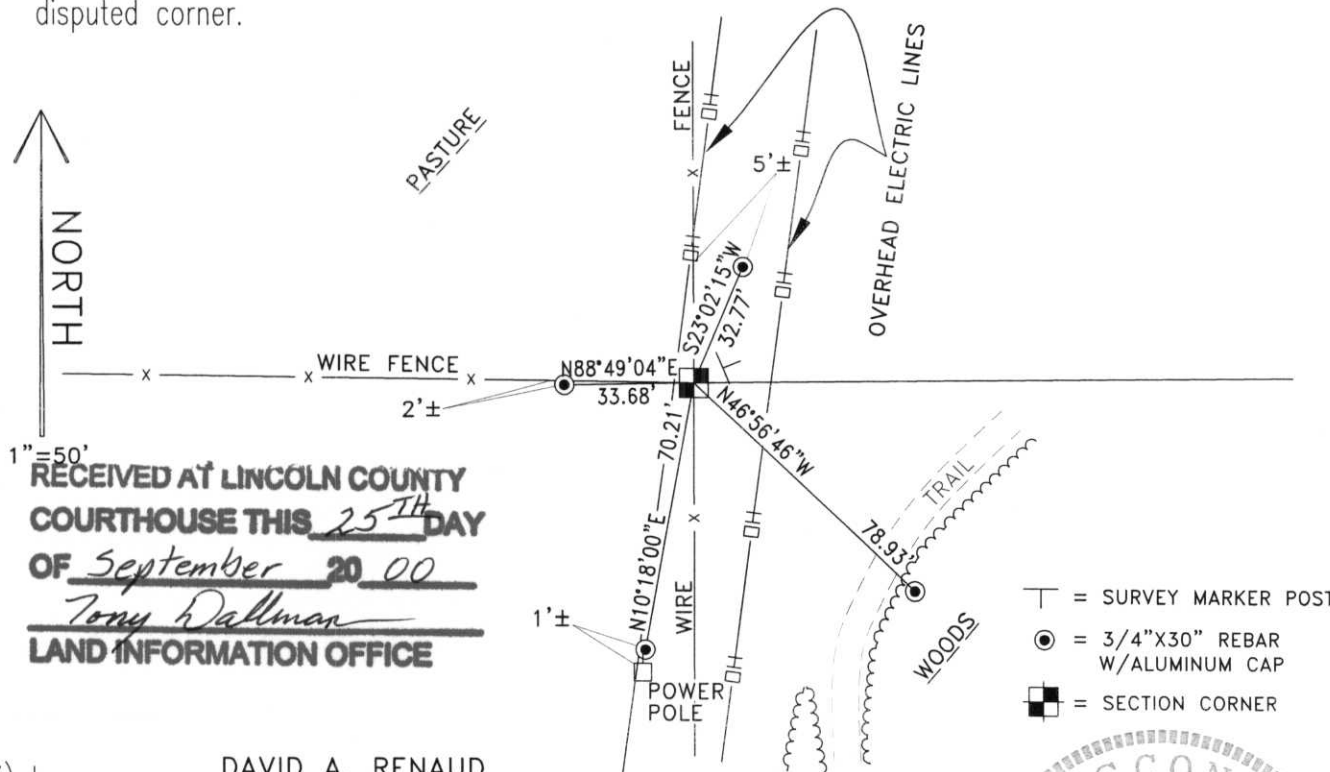


Section 10

(b)(f)(g)(h) Description of monument found at this corner and if it was accepted, state all evidence (material, testimonial, occupational, plats, records, other monuments) used as a basis for accepting. If not accepted or if nothing was found, state evidence used as basis for establishing location. If reestablished through lost corner proportionate methods, indicate all monuments, distances and directions used to establish.

I FOUND NO EVIDENCE OF THE ORIGINAL MONUMENTATION OR ACCESSORIES. I FOUND A FENCE POST AT THE CORNER OF NEWER FENCES RUNNING NORTH & WEST, AND IN LINE WITH AN OLDER FENCE LINE RUNNING SOUTH FROM THIS CORNER FOR 1/2 MILE AND POINTING AT THE REMONUMENTED SOUTH 1/4 CORNER OF SECTION 10. THIS LOCATION WAS WITHIN 10 FEET OF BEING EQUIDISTANT FROM THE NORTHWEST AND NORTHEAST CORNERS OF SECTION 10. I ACCEPTED THIS POST AS THE BEST EVIDENCE OF THE CORNER'S ORIGINAL LOCATION. I SET A BERNSTEN ALUMINUM CAP MONUMENT AT THIS LOCATION AND TIED OUT AS SHOWN BELOW.

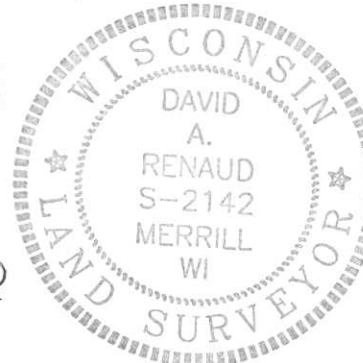
(c)(d)(e) Plan view of corner with ties to at least 4 witness monuments. If in disagreement with previously established corner, show the distances between the two corners and also indicate the ties to the disputed corner.



1" = 50'
RECEIVED AT LINCOLN COUNTY
COURTHOUSE THIS 25TH DAY
OF September 20 00
Tony Dallman
LAND INFORMATION OFFICE

- T = SURVEY MARKER POST
- = 3/4" X 30" REBAR W/ALUMINUM CAP
- = SECTION CORNER

(i) I, DAVID A. RENAUD
(type or print name) certify that the corner location on this record was determined by me or under my direction and control and that this U.S. Public Land Survey Monument Record is correct and complete to the best of my knowledge and belief.



Index No. E-15

David Renaud Sept. 17, 2000
Signature Date